



Order No. 4.24450 Drawing Board

Play value

Children's need to scribble and draw on various surfaces can be perfectly guided by installing a drawing board. Kindergarten children in particular feel themselves attracted to the "blackboard" and they use it as an incentive for role-playing games.

Fundamental characteristics

- child proportions according to ergonomic requirements
- natural wooden surface that appeals to the senses
- minimalistic style
- with chalk tray

Suitable

- for small children's areas of: play spaces situated near houses
- kindergartens
- for day nurseries

Barrier-free

- independent play

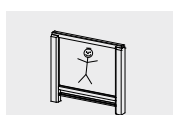


Standard version with chalk tray



Drawing Board

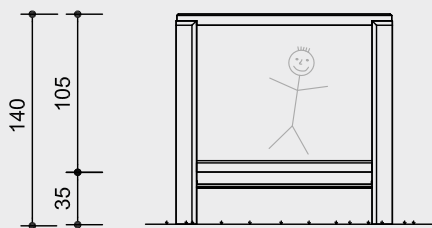
low version for small children



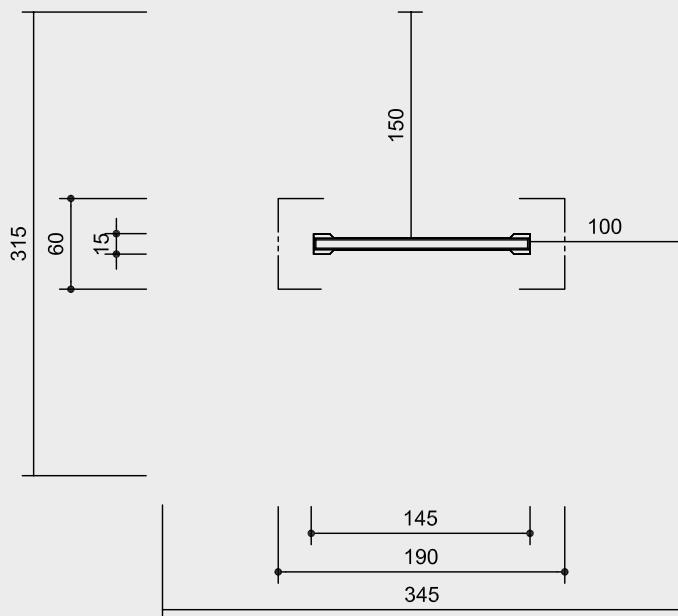
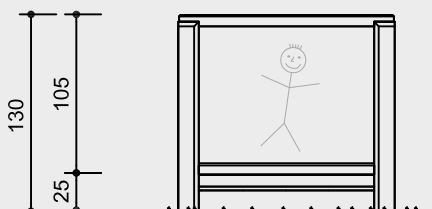
4.24450/4.24455

Order No. 4.24450

scale 1:50



Order No. 4.24455 low version for small children



safety check according to EN 1176

Components

1 drawing board with chalk tray
1 package of liquid chalk pens (6 pieces)

Also available for wall attachment, see
Order No. 4.24460 in the price list.

Installation information

Surfacing requirements
no requirements

Foundations
Order No. 4.24450
2 items 60 x 60 x 60 cm
excavation depth 80 cm

Order No. 4.24455
2 items 60 x 60 x 50 cm
excavation depth 70 cm

Attention:
**Exact measurements may vary; for
all installation dimensions refer to
current assembly instructions.**
Technical changes reserved.

Technical information

core-free timber

sawn timbers of non-impregnated
mountain larch, core-free, thus
decreasing the occurrences of cracking



stand posts of 14/14 cm oak heartwood

drawing board of HPL high-pressure
laminated wood, thickness 10 mm,
usable on both sides

matt surface; colour ultramarine

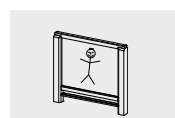
chalk tray made of stainless steel

Dimensions

(small deviations possible)

height	
Order No. 4.24450	1.40 m
Order No. 4.24455	1.30 m
length	1.45 m
width	0.15 m
drawing surface	116 x 92 cm
weight	
Order No. 4.24450	100 kg
Order No. 4.24455	95 kg

Please refer to the price list for a more detailed
explanation of the quality characteristics.



4.24450/4.24455