

FINISHED GOODS INSPECTION REPORT

Conducted by Tony

Client Name: XXX Systems Ltd

Supplier: XXX Clothing Co., Ltd

Product: Safety Coverall

Inspection location: XXX, Jiangsu province

Inspection date: 31st August 20XX

Product Description



| | |
|-------------------------------------|-----------------------|
| Client Name: | XXX Systems Ltd |
| Product Name: | Safety Overall's |
| Inspection location: | Jiangsu Province |
| Inspection date: | 31/08/20XX |
| Your Reference number: | |
| P/O Number: | 100328818 |
| Supplier: | XXX Clothing Co., Ltd |
| Order Quantity: | 3800pcs |
| Pieces ready for Inspection: | 3772pcs |
| Reference Sample Available: | 2pcs |

| | | |
|-----------------------------|-----------------------------|---|
| Factory Co-operation | Factory Organization | Inspector's Opinion on the Factory |
| OK | OK | OK |

Inspection Standards

| | |
|--|-----------------------|
| Inspection type: | Production Inspection |
| Sampling standard: | ISO 2859-1 |
| Sampling level: | At Random |
| AQL for Critical defective: | 0 |
| AQL for Major defective: | 1.0 |
| AQL for Minor defective: | 2.5 |
| Sampling size for Critical/ Major/ Minor: | 200pcs |
| Number of inspected pieces: | 200pcs |
| Total number of inspected cartons: | 10 cartons |

Number of Inspection Days: 1



Inspector: Tony.Liu



Supervisor: Jacky Zhao

Inspection Province in China



[Jiangsu Province]

Important Remarks / General Defects

1. The order quantity is 3800pcs, but the actually the factory manufactured 3772pcs (Long sleeve coverall: M-750pcs,L-564pcs,XL-187pcs,XXL-200pcs,XXXL-185pcs, total amount is 1886pcs;

Short sleeve coverall: M-750pcs,L-570pcs,XL-285pcs,XXL-108pcs,XXXL-173pcs, total amount is 1886pcs)

2. Some untrimmed thread ends were found on the product surface(20 out of 200),rework is required ,out of AQL levels,

3. 1 piece of clothing has dirty mark on the product surface(1 out of 200),need to rework

4. All the problems which I checked and found has been informed to the supplier, who said that they would fix and recheck by their QC people.

Photos of Products Remarks & defectives:



Untrimmed thread ends on the product surface



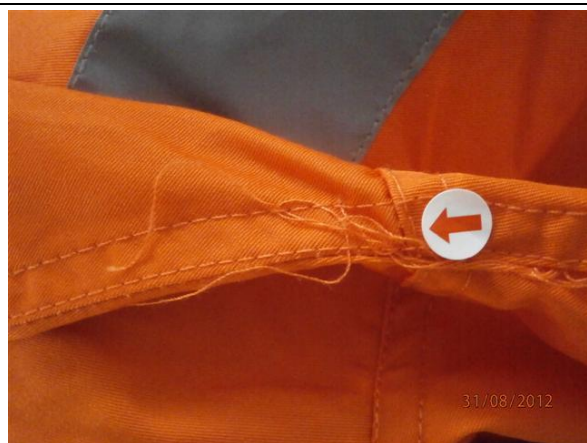
Untrimmed thread ends on the product surface



Untrimmed thread ends on the product surface



Untrimmed thread ends on the product surface



Untrimmed thread ends on the product surface



Dirty mark on the product surface



3772pcs product in warehouse



3772pcs product in warehouse

Quality Criteria

1. Quantity

| Expected Result | Result | Actual Finding / Comments |
|----------------------------|------------------------------------|--|
| Order quantity is 3800pcs. | Buyer needs to confirm with Seller | The factory finished 3772pcs for this order. |

Photos of the product to be tested



Drop test OK



Drop test OK



Reflective test



Reflective test



Fade test



Fade test



Pull test OK



Pull test OK

2. Colour

| Expected Result | Result | Actual Finding / Comments |
|---|--------|---|
| Mass product should be the same as the approval sample. | Passed | Mass product same as the approval sample. |

Photos of the product colour



Approval sample & Mass product



Approval sample & Mass product



Approval sample weight 650g(L)



Mass product weight 650g(L)

3. Function test

| Expected Result | Result | Actual Finding / Comments |
|---|--------|---|
| Mass product should be same as the approval sample. | Passed | Mass product same as the approval sample. |
| Zipper test: Zipper need to smooth when use. | Passed | Zipper test:Zipper need to smooth when use. |

Photos of the product function test



Approval sample & Mass product



Approval sample & Mass product



Approval sample & Mass product



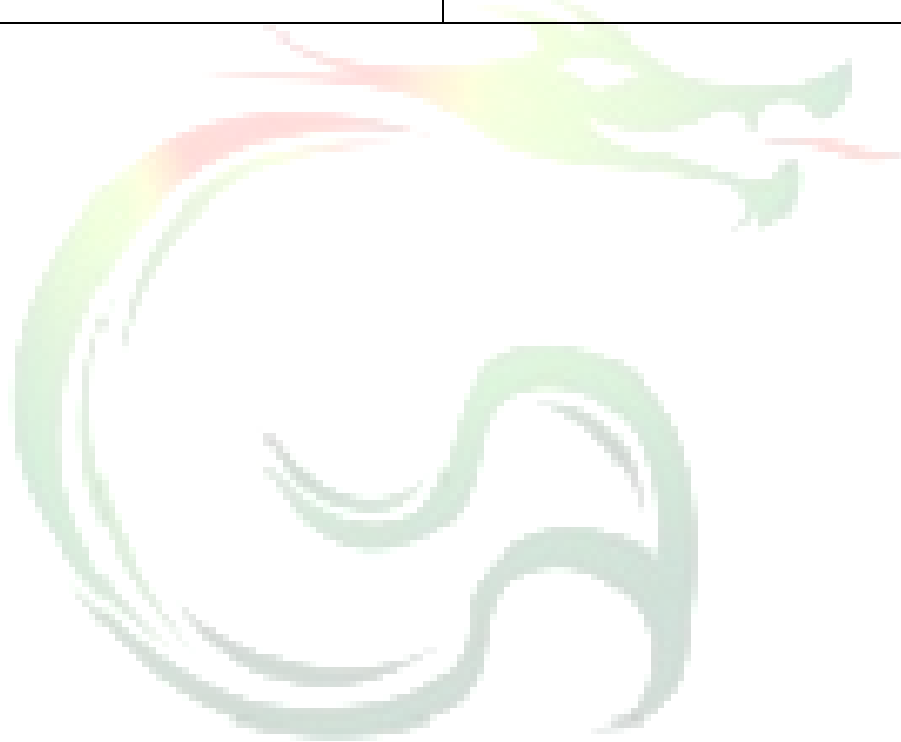
Approval sample & Mass product



Zipper test OK




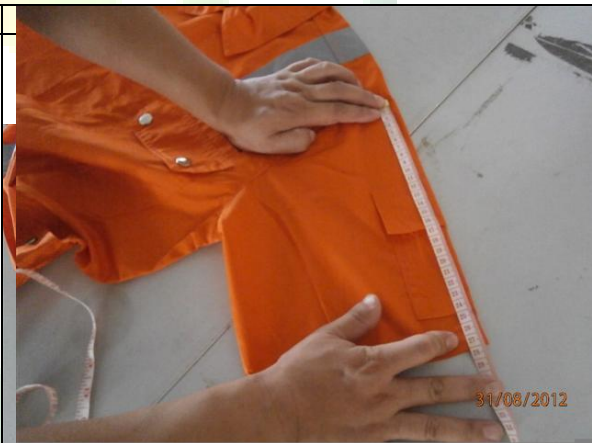


Zipper test OK





4. Product size check

| Expected Result | Result | Actual Finding / Comments |
|---|--------|---|
| Long sleeve coverall: M L XL XXL XXXL Short sleeve coverall: M L XL XXL XXXL | Passed | Long sleeve coverall: M L XL XXL XXXL Short sleeve coverall: M L XL XXL XXXL |

Photos of product size check

| | |
|---|--|
|  |  |
|  |  |
| Bust Measurement | Shoulder Width Measurement |

| sleeve length measurement | sleeve length measurement |
|---|--|
|  A person is measuring the sleeve length of an orange garment. The tape measure is held across the sleeve. A date stamp '31/08/2012' is visible in the bottom right corner of the image. |  A person is measuring the sleeve length of an orange garment. The tape measure is held across the sleeve. A date stamp '31/08/2012' is visible in the bottom right corner of the image. |
| hip circumference measurement | pants long measurement |



Measurement table: 1.Long sleeve overcall

| | M(CM) | L(CM) | XL(CM) | XXL(CM) | XXXL(CM) |
|-------------------|-------|-------|--------|---------|----------|
| Bust | 113 | 120 | 122 | 129 | 133 |
| shoulder width | 48.5 | 50.5 | 51.5 | 53.5 | 55 |
| sleeve length | 60 | 61 | 63 | 64 | 66 |
| hip circumference | 112 | 115 | 117 | 126 | 129 |
| pants long | 75 | 75 | 76.5 | 77.5 | 78 |

| | M(CM) | L(CM) | XL(CM) | XXL(CM) | XXXL(CM) |
|-------------------|-------|-------|--------|---------|----------|
| Bust | 114 | 120 | 124 | 130 | 131 |
| shoulder width | 49 | 50.5 | 51.5 | 53.5 | 55 |
| sleeve length | 27.5 | 28 | 28.5 | 29 | 29.5 |
| hip circumference | 116 | 118 | 123 | 126.5 | 129 |
| pants long | 75 | 75 | 77 | 78.5 | 79 |

5. Logo & Size label

| Expected Result | Result | Actual Finding / Comments |
|--|--------|--|
| The logo and size label should be same as client provided sample | Passed | The logo and size label same as client provided sample |

Photos of Logo and size label









6. Packing

| Expected Result | Result | Actual Finding / Comments |
|---|--------|-------------------------------------|
| Carton should be enough strong. | Passed | 5 layer corrugated |
| Unit packing should be same as provide sample | Passed | Unit packing same as provide sample |
| 35pcs per carton | Passed | 35pcs per carton |

Photos of packing







Carton measurement: $64.5 \times 46 \times 32.5$ cm



Carton measurement: $64.5 \times 46 \times 32.5$ cm

7. Product detail view

| Expected Result | Result | Actual Finding / Comments |
|--|--------|--------------------------------|
| Product should be same as provide sample | Passed | Product same as provide sample |

Photos of Product detail











End of the Report