



Bee Friendly Garden Planner

Print out and share with community garden and allotment groups.

For further information visit:
www.BuzzAboutBees.net/gardening-for-bees.html

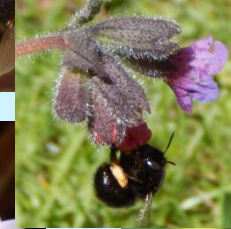


Tips For Planning A Bee Friendly Garden

Which bees
would you like
to attract?

What do you
need to plant
for them?

Include a variety of
different flower shapes



Bees love clover, so leave a
patch to flourish on your
lawn!

Trees and shrubs such as cotoneaster and hawthorn provide efficient foraging opportunities. Shady areas can provide welcome nest sites for some bumblebee species.

Please do not use pesticides, including lawn and preventative vine weevil treatments.

Gardening for bees in small spaces? Use climbers to grow upwards.

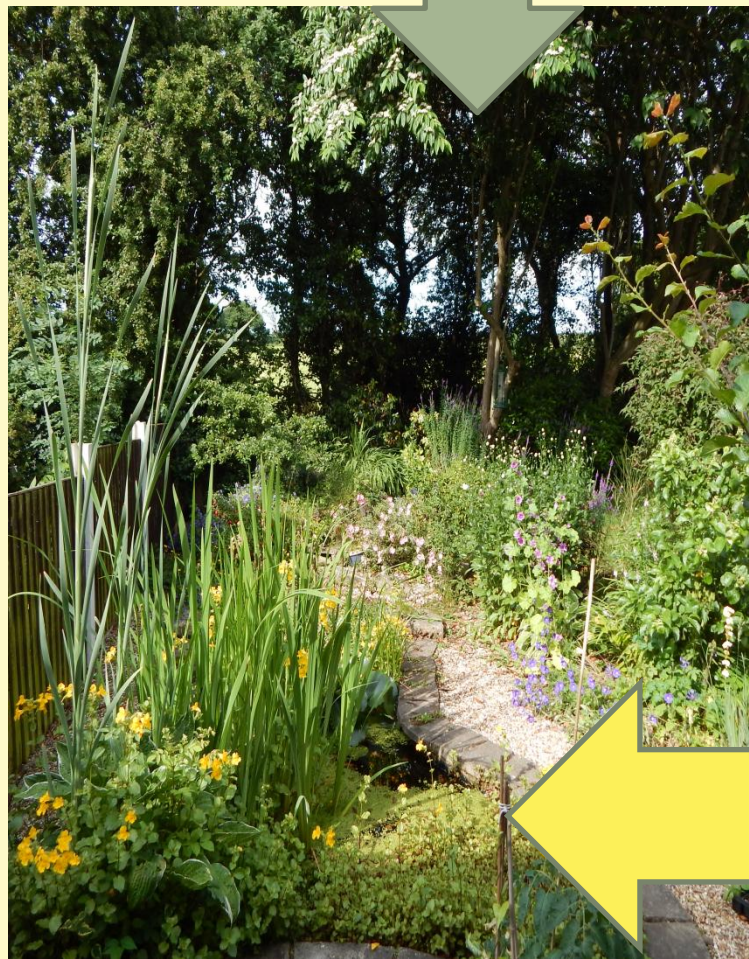
Bees make nests in a variety of places.
Possible man-made bee houses:
bunch of hollow canes, bird box,
upturned plant pot beneath shed



Ponds and rockeries are great for bees and other wildlife. Mud is useful for nests for some species. Fill ponds with bee-friendly plants such as iris, Lythrum salicaria mimulus, water avens

Some bees hibernate in hollow stems and in leaf litter, and some bees are so tiny, they can be mistaken for little black flies.

Please leave the tidying until spring, or place old stems in a pile at the back of the garden, don't burn them.



Planting Calendar: What's In Flower For Bees?

(Including Trees, shrubs, herbs, wildflowers, climbers, pond plants, rockery plants, bulbs etc)

Jan - Feb	Mar - April	May - June	July - Aug	Sept - Oct	Nov - Dec