

## TEAM SPACE

The ProjectObjects Team Space provides discussion boards, the ability to share ideas and the mashing up of social collaboration features with formal project management processes.

ProjectObjects collaboration capabilities have been designed to enable projects teams to share information about Issues, Actions, Changes, Risks and Documents into a social area where updates can be easily shared in single repository.

## BUSINESS PROCESS MANAGEMENT

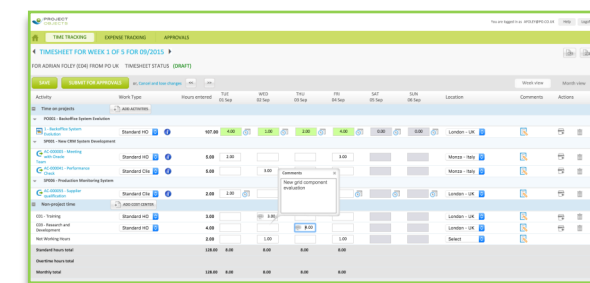
Business Process Management (BPM) is a management process that optimizes the business practises, it enables user to be more efficient, effective and make him capable of changes in functionality and working scenarios. It does not follow defined approach; here user can design processes according to his needs and requirements.

Therefore, PO8 application provides customization capabilities to the user. Users don't have to follow defined process or form. They can make their own process and build forms according to their needs and requirements.

## TIME TRACKING

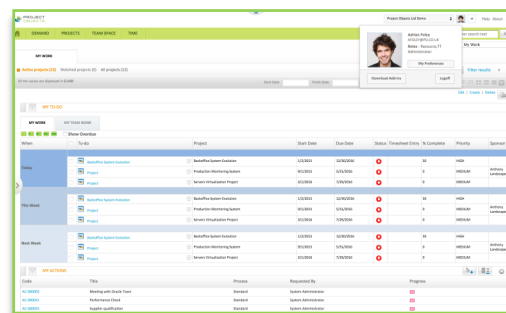
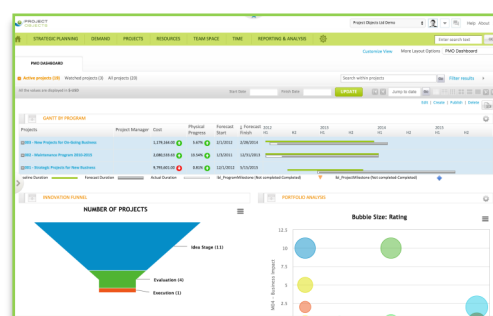
Project managers are faced with a dilemma in tracking progress on their projects. They need accurate information from resources, but they also need those resources not to be distracted from their allocated work by updating status reports.

ProjectObjects recognizes this and makes it remarkably easy to capture information on work performed. Not only is it easy for resources to report progress on their assigned tasks, that information is then consolidated into time and expense reporting at any level e.g. from portfolio to task, the tool also recognizes that time and expenses will be incurred in unplanned ways. Issues, change requests, risk assessments, etc., will all take time and effort to resolve and these modules need to be tracked.



## CUSTOMIZABLE DASHBOARDS

ProjectObjects Homepage is a completely self-configurable area where users can define the contents they want to see according to their role and needs. From a huge list of widgets, users can choose the contents they want to keep a watchful eye on within the home page, that becomes a real definable multi-tab dashboard. Widgets are sutable and customizable components, from which users can drill-down into data or open pop-up windows showing more information: they are a very useful starting point to perform deeper analysis, but also to quickly modify data if needed. Users can define as many dashboards they want and each of them will be shown in a different tab. This is a simple way for the users to organize views and their job according to their habits.



ProjectObjects is a comprehensive EPI (Enterprise Project Intelligence) platform that combines high performance project portfolio management tools, with powerful analytics and portfolio dashboard modules in a single solution.

ProjectObjects allows your team members to maximize their productivity by helping them to track assigned actions, raise and manage issues, control risks and develop key project documentation. The suite provides powerful phase and gate functionality that allow you to review and approve work at multiple points in the project and provides reporting and dashboard functionality that allows you to monitor progress made against pre-defined criteria.

A true differentiator in ProjectObjects is the ability to configure the tool to see the data that you want, in the way that you want to see it. This doesn't require substantial customization or a complex deployment, it is a simple and quick to configure set of functions that allow you to define how you need to manage the portfolio, programs and projects within your organization.

All of this is combined with an incredibly intuitive user interface that can be learned in minutes and allows you to get to the data that you need with just a few clicks of a mouse.

## PROJECT MANAGEMENT

### Managing Projects Life Cycle

With ProjectObjects, the project execution processes can be managed using a Phase & Gate approach that helps you to build a conceptual and operational roadmap for moving a new project from idea to launch.

The project development process can be organized into distinct, time-sequenced Phases separated by management decision gates.

Each Phase can be associated to a prescribed set of activities, deliverables and milestones that must be successfully completed before getting management approval to proceed to the next Phase of project development.

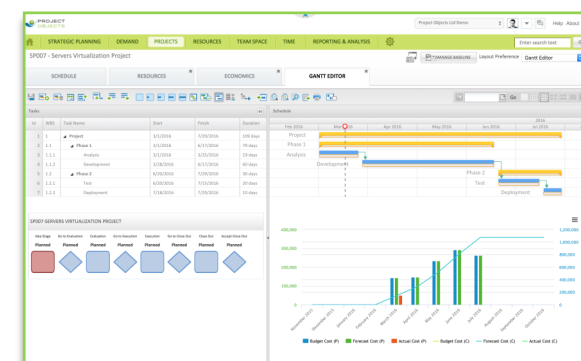
### Scheduling & Resource Planning

The project's schedule can be created using the ProjectObjects web interface. Resources can be easily planned across project activities through a set of powerful functions that enable users to:

- Assign resources by skill or by name
- Substitute resources according to their skills
- Quickly locate alternative resources in case of overload assignments

### Cost Management

ProjectObjects is capable of supporting cost management processes from budgeting to control & forecasting. Costs can be organized according to company Cost Breakdown Structure (CBS) and Accounting Codes in order to guarantee cross-project consolidation at company level.



### PROJECT OBJECTS SOLUTION

Organizations have a number of major, business critical initiatives underway at any given time – project software and programs that can make or break their future and that require timely, accurate information to ensure that they are managed correctly. However, organizations also have numerous smaller initiatives that are no less important, even if their scope and impact is smaller. They still need to be effectively managed if the organization is going to achieve its goals.

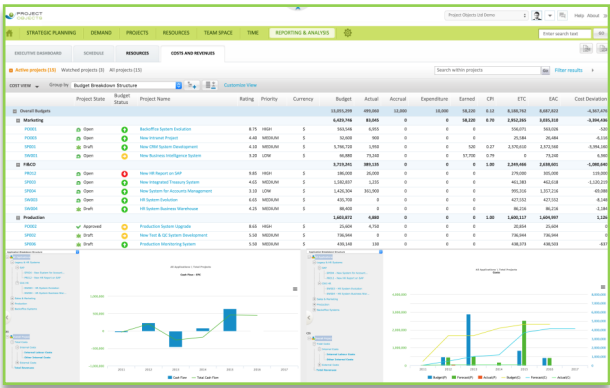
Project Objects offers a single, comprehensive solution that can support the large scale, enterprise wide initiatives and the more straightforward department and team level projects. The modular approach allows customers to use the tools that they need to support each initiative and come together to provide a portfolio wide Enterprise Project Intelligence (EPI) platform that provides reporting and analytics at any level of the portfolio – and it's all done within a single solution.



PROJECT ANALYZER

Project Analyzer allows the user to safely and securely share the most significant information for one or more projects, re-enforcing communication between team members.

PA is a useful tool for business users, customers and partners who can easily run searches across different projects and track the execution of projects. The projects displayed in PA vary according to user privileges, max number of rows in a page, any active filters. Project list can be sorted and filtered according to the user needs and contents of specific views. This information can be exported to PDF or Excel files by clicking the dedicated icons. Data is displayed by default in a flat table view. It is possible to switch to a tree view selecting one of the multi-projects views created at the Organization level. Applying an EBS group to a set of projects, the projects will be displayed as a tree structure in which each node represents the most important values.



RESOURCE MANAGEMENT

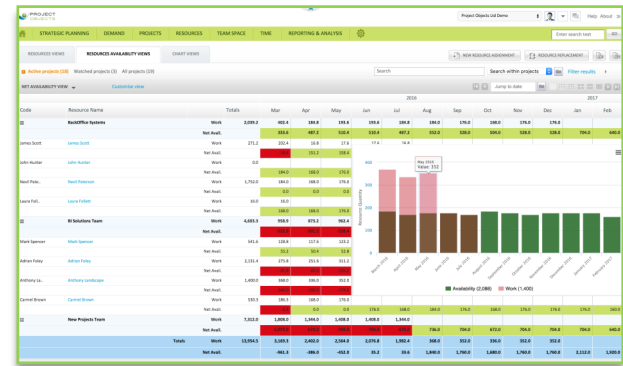
Success in today’s competitive market isn’t just about getting new projects. Organizations must be able to manage these projects maintaining their profitability and reaching the maximum customer satisfaction.

Information, employees, time and resources must be managed in order to keep reins on projects and enhance customer relationships.

If you aren’t utilizing your resources effectively then you have a problem. Clearly it costs money to have resources that are under-utilized. Not only are you paying them to be unproductive, they will also be bored, frustrated and will be less productive when they are assigned to work. Similarly, over-utilized resources will become stressed, lose motivation and be more prone to absences.

The only thing worse than having over or under-utilized resources is not knowing whether your resources are over or under-utilized, and that happens every day if you are not using the right tools.

**Resource Management** allows you to see resources that are available before they are assigned to the work and it also takes into account the availability for the full duration of the task, not just the start. You can view resource assignments any way that you want – as a group, at the individual level, by department, function, skill set, etc – whatever helps you run your business more effectively.



This provides you with the ability to plan for upcoming resource challenges – to see your resource needs far enough ahead to hire, train, reallocate, etc. It allows you to identify other initiatives that can take advantage of slack times, or to implement resource cost saving measures that will not impact your ability to execute projects.

With **Resource Management** you have a full time resource dedicated to making sure that your resource management is optimized – every day, in every function, and on every project.

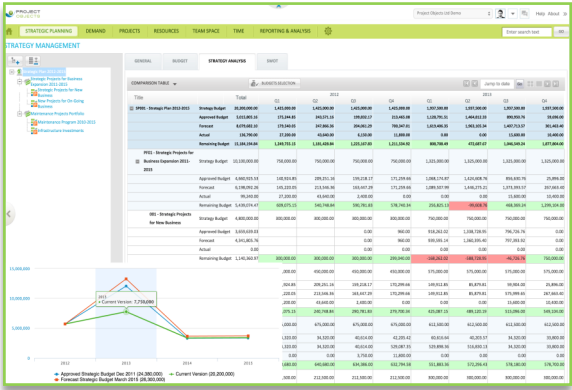
STRATEGIC PLANNING

Strategic Planning is the module dedicated to create long terms plans for evaluating the best company strategy.

Strategies can be easily created and composed by adding/removing Portfolios and Programs and defining your cost and benefits phasing according to a budget model created at Company level.

Within Strategic Planning module, multiple alternative scenarios can be created, allowing the most suitable one to be moved forward.

Once budget is consolidated, you can take a snapshot and start comparing the execution of the strategy with the ongoing projects in the portfolios and programs.



DEMAND MANAGEMENT

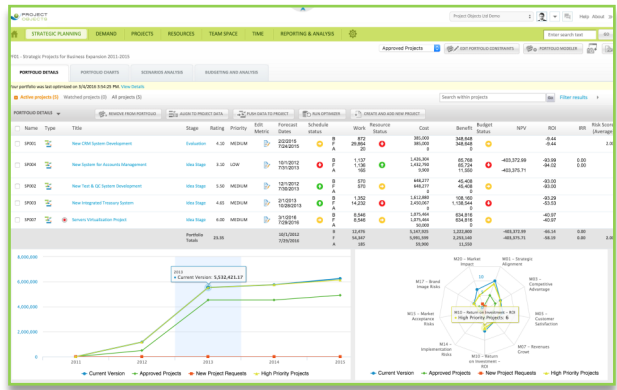
**Demand management** is the foundation for successful PPM. Demand management gets your project portfolio off to the right start by providing functionality that allows for work to be initiated, reviewed, enhanced and ultimately submitted for approval.

**ProjectObjects** offers functionality that makes demand management extremely easy:

- ◆ Easy creation of new work requests and ideas making the tool easy to access for all levels of users and thereby removing all barriers to capturing ideas from anywhere in the organization. If your tool is not accessible for all users then good ideas will be lost simply through an inability to interact with the technology.
- ◆ Powerful, quick categorization capabilities. Items can be tagged in any number of different ways allowing for appropriate categorization, consolidation of related requests and the elimination of duplicate items.
- ◆ Intuitive collaboration tools that allow for ideas to be shared and worked on across multiple people, offices, locations, etc. This helps to break down the organizational and physical barriers that can easily prevent good ideas from being considered simply through a lack of visibility and refinement.
- ◆ Logical development. Additional work elements can be tied to ideas allowing a simple submission to evolve through analysis, business casing and benefits assessment with all of the work still being tied to the original submission.

PORTFOLIO MANAGEMENT

**ProjectFolio** is the ProjectObjects module that offers sophisticated portfolio management functions, designed to provide optimum support for the processing and management of your investment strategies and business development.



**ProjectFolio** allows you to monitor the evolution of your project portfolio and make essential choices right on time, whilst guaranteeing that human, economic and financial resources are directed towards projects which generate the greatest returns.

With **ProjectFolio** you can implement portfolio management as a dynamic process, where the portfolio contents can be constantly revised and optimized. In this process new projects are evaluated, selected and prioritized. Existing projects may be accelerated, ended, or de-prioritized; and resources are allocated and reallocated to active projects.

