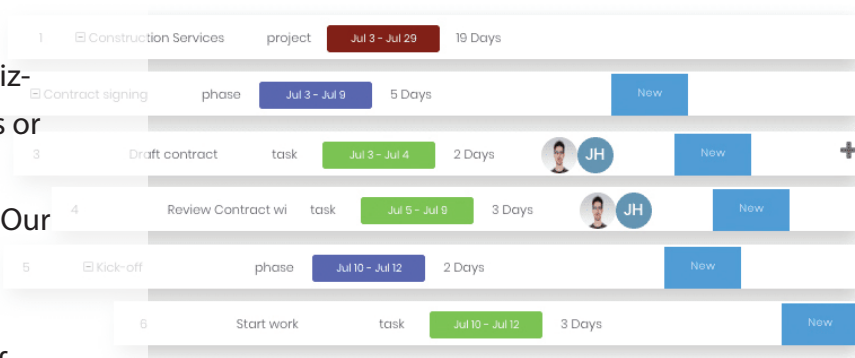


PlanStreet's Online Gantt charts can facilitate in planning and controlling multiple projects at a time.

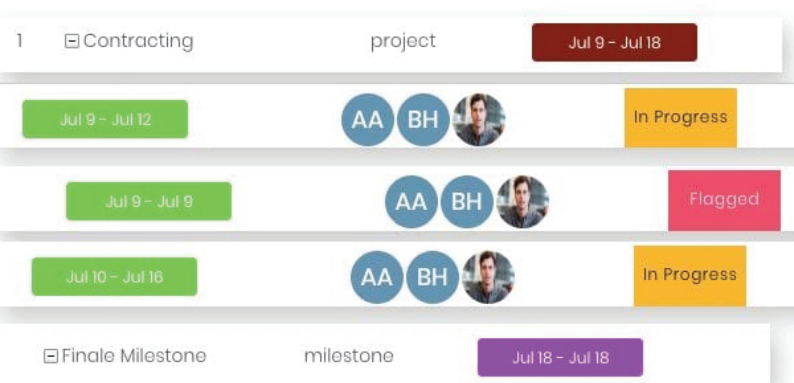
Manage multiple project plans

PlanStreet Users can create various project plans whether it's a team project or a personal task utilizing online Gantt chart. Change project schedules or reset tasks with ease. Share with clients, provide them access to view or edit project plans online. Our dynamic Gantt chart allows you to update plans across the board with a single click, and a "smart calendar" acts as an early-warning system, identifying delays and ever-changing issues.



Resource planning

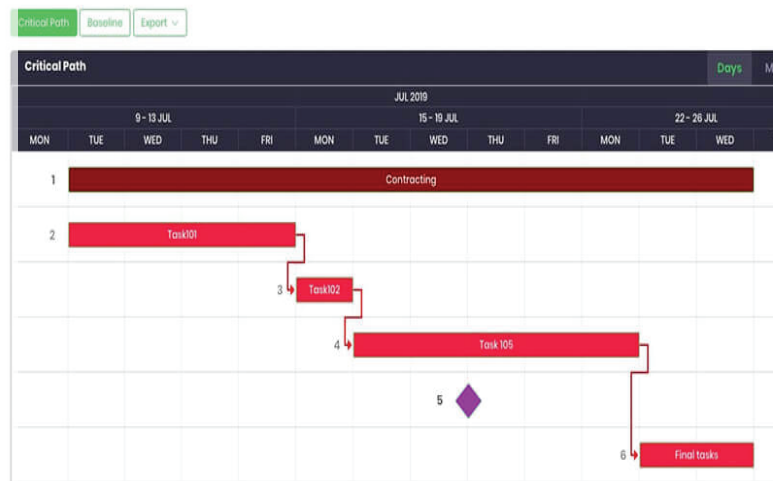
PlanStreet Gantt chart allows you to manage resources and estimate how much your project would cost. You can also add resources and give them specific tasks. Take a step ahead and allocate cost by the hour and time spent on the task. Gantt charts will immediately calculate project cost. Our intuitive software allows you to track and control expenses within budget.



“Gantt charts make it easy for you to divide projects into tasks and sub tasks, organize and schedule them and then set durations among them.”

Auto scheduling & critical path

Our dynamic Gantt charts automatically recalculate task dates and dependencies as part of auto scheduling. Project managers find it easy to prioritize tasks, indent and outdent by simply dragging and dropping tasks and their attributes. When critical Path is on, you get alerted about tasks that are most important for project success. It helps sequence the tasks which are critical in determining the overall duration of the project. When projects have a lot of activities with various dependencies, critical path can be a huge help in defining tasks that have the greatest impact. Critical path can shorten project duration by defining the most critical parts of the project plan.



Baseline

Project managers find baseline very useful when they need to compare original project plan with current state of project. Baselines are created by adding snapshots of your project at any given time to your Gantt chart. Afterwards, you can compare these projections to the actual timeline of the project. This helps in understanding which activities were delayed, which were on time, and which were completed ahead of schedule. PlanStreet has designed baseline to help you reach every project's destination on time and within budget. Critical path can shorten project duration by defining the most critical parts of the project plan.

