

Project:  
Block 95 Demo

# WEEKLY CONSTRUCTION PROGRESS REPORT



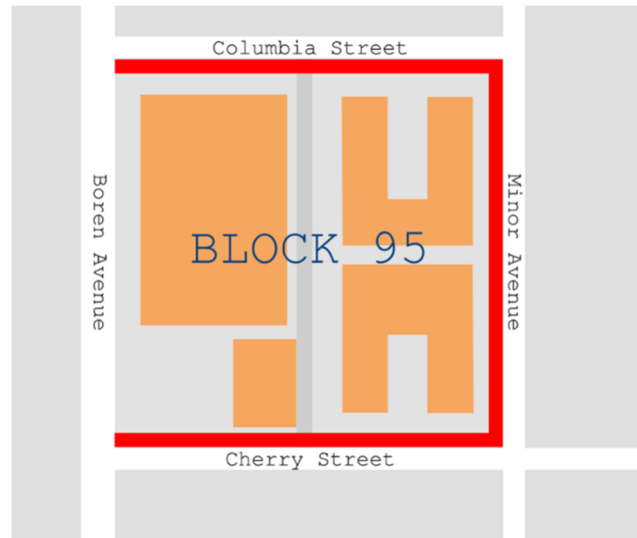
## REPORT FOR THE WEEK OF:

July

S	M	T	W	T	F	S
			1	2	3	4
5	6	7	8	9	10	11
12	13	14	15	16	17	18
19	20	21	22	23	24	25
26	27	28	29	30	31	

## CLOSURES:

Sidewalks & parking lanes along Columbia, Minor, & Cherry



## UPCOMING CONSTRUCTION ACTIVITIES:

Activity Description	Start Date	End Date	Noisy/Disruptive
Processing & Sorting Demo'd Material	6.29.20	7.31.20	
Crushing Demo'd Material for Drilling Bench	7.15.20	7.31.20	
Build Drilling Bench in SE Corner & Cap Open Soil	7.16.20	8.7.20	

## SHUTDOWNS & CLOSURES:

Description	Start Date	End Date	Noisy/Disruptive
Sidewalks & Parking Lanes	—	7.31.20	

## PROGRESS PHOTOS:

= Requires Street/Sidewalk Closure    = Noisy Activity

Report Prepared By:  
Ryder Locknane

Questions?  
[ConstructionInfo@Mortenson.com](mailto:ConstructionInfo@Mortenson.com)

Project:  
Block 95 Demo

# WEEKLY CONSTRUCTION PROGRESS REPORT



Crushing and Sorting Remainder of Rebar from Rubble Material



SE Corner Remainder Wall Excavated



Block 95 – View from Web Cam



Spreading of Crushed Rock Along SE Bench for Drilling Rigs



= Requires Street/Sidewalk Closure



= Noisy Activity

Report Prepared By:  
Ryder Locknane

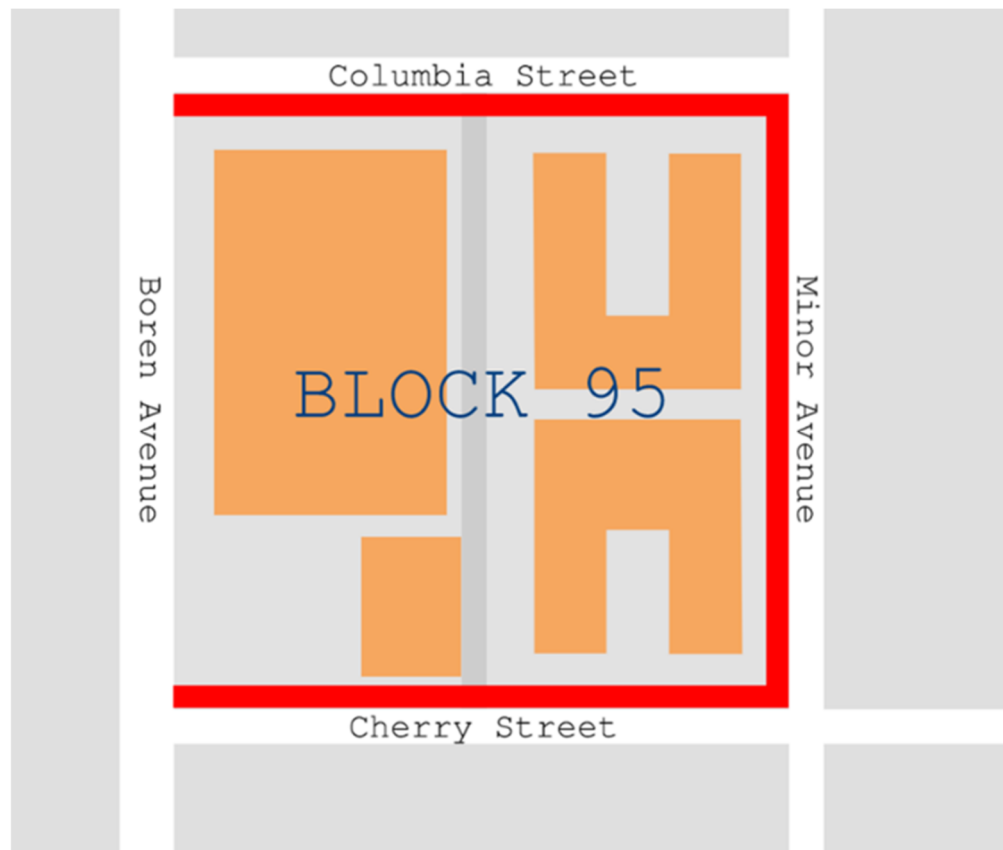
Questions?  
[ConstructionInfo@Mortenson.com](mailto:ConstructionInfo@Mortenson.com)

# Construction Activity Notice

## SWEDISH FIRST HILL

---

Demolition activities are ongoing at the Block 95 property. The sidewalks and **parking lanes** on Cherry Street, Minor Avenue and Columbia Street are closed during demolition. These activities will result in increased trucking, and noise during working hours.



Questions?

[ConstructionInfo@Mortenson.com](mailto:ConstructionInfo@Mortenson.com)

