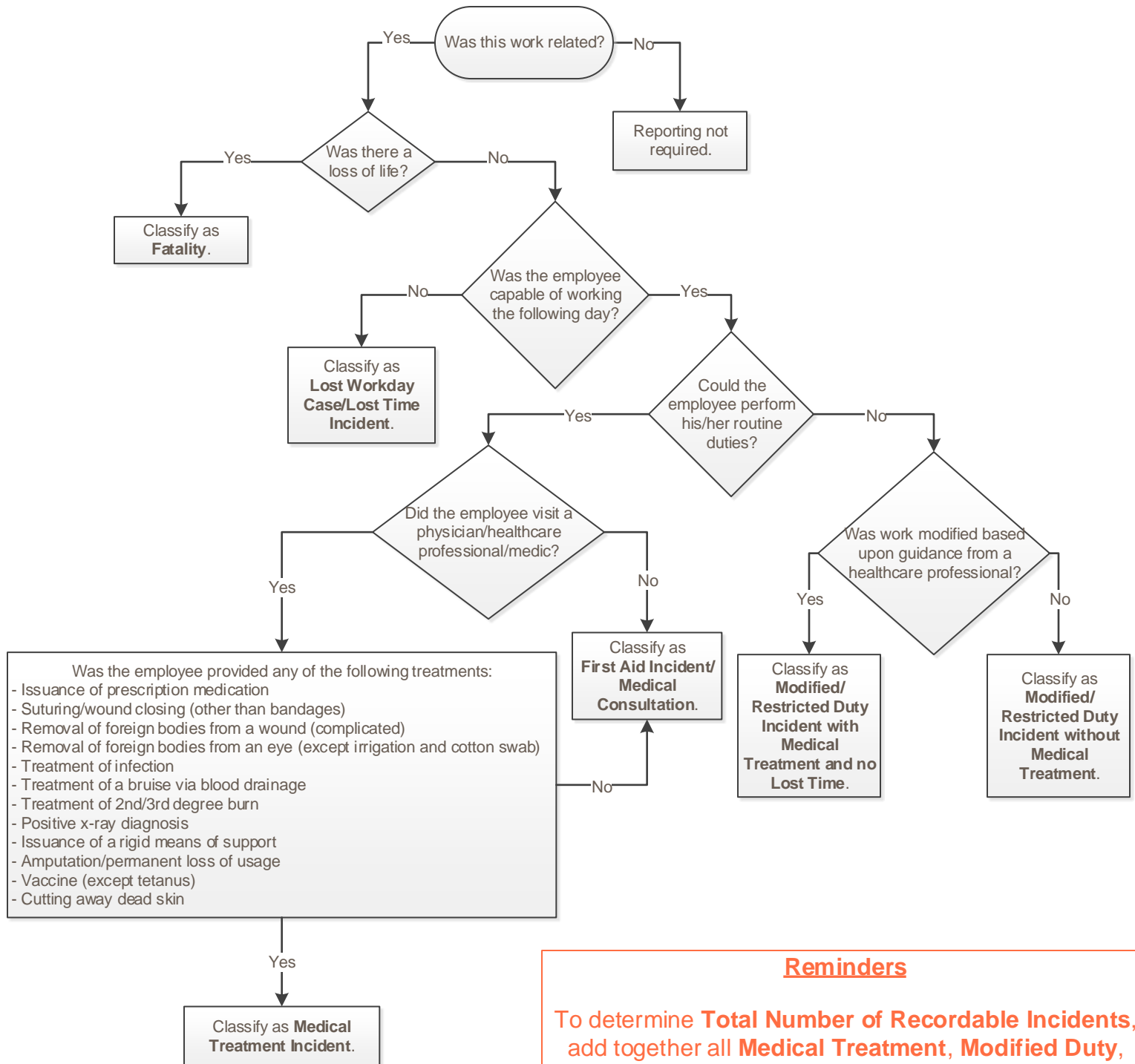


Incident Classification Flow Chart



Reminders

To determine **Total Number of Recordable Incidents**, add together all **Medical Treatment, Modified Duty, Lost Time** and **Fatality** incidents.

Record each incident **only once**, at the highest level of severity, in the quarter in which it first occurred.

References

- <http://www.capp.ca/getdoc.aspx?DocId=234735&DT=NTV>
- <http://www.saskmining.ca/>
- http://www.wcb.ab.ca/pdfs/employers/c040_instn.pdf
- <http://www.wsib.on.ca/en/community/WSIB/230/ArticleDetail/24338?vgnnextoid=c15ae35c819d7210VgnVCM100000449c710aRCRD>
- http://www.whscc.nf.ca/employers/Emp_ReportingaWorkplaceIncidentorInjury.whscc
- <http://www.msha.gov/forms/70001def.HTM>
- http://www.osha.gov/pls/oshaweb/owadisp.show_document?p_id=9638&p_table=STANDARDS