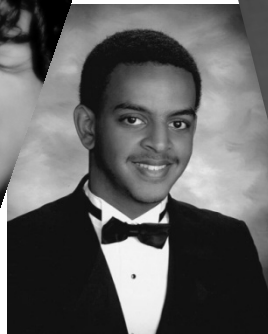


# project discovery

*of Virginia*



# CONTENTS

- HISTORICAL TIMELINE
- WHAT WE DO . . .
- HOW WE DO IT . . .
- PARTNER AGENCIES AND LOCATIONS
- SCHOOLS AND DISTRICTS
- TOP COLLEGE PICKS FOR PD STUDENTS
- FUNDING SOURCES, LEVELS, EXPENSES
- RETURN ON INVESTMENT
- DEMOGRAPHICS
- RESULTS
- PARTNERING WITH RADFORD UNIVERSITY ~ STEM PROGRAM
- OTHER PARTNERSHIPS
- FRIENDS OF PROJECT DISCOVERY OF VIRGINIA
- VIRGINIA ATHLETES FOR EDUCATION
- FIVE YEAR SCHOLARSHIP GROWTH FROM \$700 TO \$25,500
- GROWTH OF BANQUET
- NEW WEBSITE
- SUCCESS STORIES

## What students say about Project Discovery:

*"It [Project Discovery] creates family which crosses the boundaries of schools, cities and counties."*

*"As a first generation aspiring college student, Project Discovery opened doors of opportunity."*

*"This program taught me about leadership, morals, ethics, and the importance of civic participation."*

*"It's also encouraged me to become more active in my community and school."*

*"Thanks to Project Discovery, my grades are better and my future looks brighter."*

*"Project Discovery has given me more hope for the achievement of black students."*

*"Project Discovery acted as a catalyst for my future."*

*"Project Discovery's teen tutoring programs have helped prepare me for the new chapter in my life."*

*"This program helped my family understand the financial aid process and with college searches."*

*"It's helped me to become a more confident person."*

*"I think deciding to go to that first [Project Discovery] meeting was the best choice of my life."*

## **PROJECT DISCOVERY OF VIRGINIA, INC. HISTORICAL TIMELINE**

1979

CABELL BRAND, influence

1983

Roanoke program (TAP) begins serving students in October; seed funding received from US DOE for expansion into other agencies in Virginia

1985

Incorporated as 501(c)3 organization

Programs begin in Abingdon, Alexandria, and Charlottesville

1986

Programs begin in Cumberland, Newport News, Norfolk, Richmond, and Tazewell. Funding received from the Commonwealth of Virginia

1987

Programs begin in Chatham, Powhatan, and Rocky Mount

1988

Programs begin in Marion, and Waverly

1990

Program begins in Onancock

1993

Program begins in Fairfax, Williamsburg, and Lynchburg

1994

Program begins in Arlington

1998

Pilot Program begins in Madison

## **HISTORICAL TIMELINE CONTINUES**

2000

Project Discovery has first strategic planning retreat resulting in Vision and Mission

2001

Central Administration has a new Executive Director

Strategic planning focus

NAP participation

2002

Project Discovery experiences a reduction in funding from the General Assembly

Development of Statistical Report

Participation in the Commonwealth of Virginia Campaign

2003 - 2004

Annual Student Awards Banquet is put into place

Scholarship awards are reinstated

Radford University Week takes place

Program of the Year Award is reinstated

Project Discovery website is developed

2005 – 2006

Friends of Project Discovery is conceived

\$7,000.00 in scholarships awarded

Friends of Project Discovery Life Membership program for endowment and scholarships

2007 – 2008

Virginia Athletes for Education is conceived

\$25,500.00 in scholarships were awarded



## ***WHAT WE DO . . .***

- Show students how to research colleges and scholarships
- Assist students in applying for financial aid
- Help prepare students for SATs
- Arrange tutoring when necessary
- Hold workshops on Goal Setting,/Life Planning, Study Skills, Admissions, Financial Aid, Choosing a College/College Life
- Community Service Projects



- Campus Visits
- Track students through college
- Give students a sense of belonging
- Build self confidence
- Familiarize students with local and state government
- Cultural Events

## ***HOW WE DO IT . . .***

- Each Partner Agency has a Program Coordinator who recruits potential members for a local Advisory Board
- Program Coordinator recruits students in grades 4 – 12
- Negotiate and sign a non-financial agreement with the school system
- “Realizing the College Dream” curricula is utilized for the program
- Central Administration receives monthly progress and financial reports from each agency and Year End Program and Financial Reports



Cultural and educational  
Field trips

- Activities during the year are workshops, educational and cultural fieldtrips, community service projects, fundraising, home visits, year end awards banquets
- Central Administration conducts program and fiscal monitoring to each partner agency annually
- Group training sessions are held annually
- 1:1 training sessions are held as needed

# Project Discovery Partner Agencies



As of June 2008, there are 21 Project Discovery Programs in operation State-wide. Program locations are shown in *red* above.



# AGENCIES~DISTRICTS~SCHOOLS

AGENCY	DISTRICT	SCHOOL
Alexandria Office of Youth Services	Alexandria	TC Williams HS Minnie Howard 9 <sup>th</sup> Grade Center Francis C. Hammond MS
Arlington Housing Corporation	Arlington County	Wakefield HS Yorktown HS Washington-Lee HS Langston MS Woodlawn HS
Danville	Danville	Langston Focus Opportunity School Fresh Start Academy George Washington HS
Clinch Valley CAA	Tazewell	Graham MS Graham HS Pocahontas MS Pocahontas HS Richlands MS Richlands HS Tazewell MS Tazewell HS
Eastern Shore Area Agency on Aging & CA	Accomac County Northampton County	Arcadia HS Nandua HS Northampton HS



# AGENCIES~DISTRICTS~SCHOOLS

AGENCY	DISTRICT	SCHOOL
Fairfax Co. Office of Partnerships	Fairfax County	Falls Church HS Mt. Vernon HS Robert E. Lee HS South Lakes HS J.E.B. Stuart HS Mt. View Alternative HS West Potomac HS Mt. Vernon Woods Elementary
HOPE Community Services	Amelia Buckingham Cumberland Prince Edward	Amelia HS Buckingham HS Cumberland HS Prince Edward HS
Loudoun County Youth Outreach	Loudoun Co. Sugarland Run	Dominion HS
Lynchburg Community Action Group	Amherst County Appomattox County Bedford City/County Campbell County Lynchburg	Amherst HS Carver Price E.C. Glass HS Heritage HS Liberty HS Spring Hill Baptist Church Staunton River HS

# AGENCIES~DISTRICTS~SCHOOLS

AGENCY	DISTRICT	SCHOOL
Monticello Area Community AA	Albemarle County Charlottesville Fluvanna County Nelson County	Albemarle HS Charlottesville HS Fluvanna County HS Monticello HS Nelson County HS West Albemarle HS Clark Elementary School Jackson Via Elementary School Yancy Elementary School Greer Elementary School Buford MS Walton MS
Mountain Community Action Program	Bland County Smyth County Wythe County	Chilowie HS Fort Chiswell HS Bland HS Northwood HS Rocky Gap HS Rural Retreat HS Marion Senior HS George Wythe HS
Office of Human Affairs	Newport News Hampton	Heritage HS Warwick HS Crittenden MS Hampton HS Lindsay MS

# AGENCIES~DISTRICTS~SCHOOLS

AGENCY	DISTRICT	SCHOOL
People, Incorporated of SW VA	Russell County Washington County Bristol City Buchanan County	Lebanon HS Honaker HS Patrick Henry HS John Battle HS Holston HS Abingdon HS Virginia HS Council HS Castlewood HS
Pittsylvania County CAA	Pittsylvania County	Chatham HS Dan River HS Gretna HS Tunstall HS
Powhatan Goochland CAA	Goochland County Powhatan County	Goochland HS Goochland MS Powhatan HS Powhatan MS
Richmond Community Action Program	Henrico Petersburg Richmond	Armstrong HS Franklin Military George Wythe HS Highland Springs HS Huguenot HS John Marshall HS Petersburg HS Thomas Jefferson HS Henderson MS Chandler MC Peabody MS

# AGENCIES~DISTRICTS~SCHOOLS

AGENCY	DISTRICT	SCHOOL
Skyline CAP	Madison County	Madison County HS
Support to Eliminate Poverty	Franklin County	Franklin County HS Benjamin Franklin MS Rocky Mount Elementary
The STOP Organization	Chesapeake Norfolk Portsmouth Virginia Beach	Booker T. Washington HS Churchland HS Granby HS I.C. Norcom Indian River Oscar F. Smith Bayside Norview Hickory HS Coronoda Western Branch HS Landstown HS Lake Taylor Woodrow Wilson
The Sussex-Surry Improvement Assoc.	Sussex County	Sussex Central HS Sussex MS
Total Action Against Poverty	Covington Craig Roanoke City Roanoke County Salem City	Alleghany HS Blue Ridge Technical Academy Lucy Addison MS Covington HS Patrick Henry HS Salem HS William Ruffner MS William Byrd HS

# AGENCIES~DISTRICTS~SCHOOLS

AGENCY	DISTRICT	SCHOOL
TAP continued		William Fleming HS Woodrow Wilson MS Jackson MS Hidden Valley HS Cave Spring HS James Madison HS Achievement Center
Williamsburg-James City Co. CAA	James City County Williamsburg	Berkeley MS Blair MS CEO Jamestown HS Lafayette HS Toano MS



Project Discovery students from Pittsylvania County  
Community Action Agency

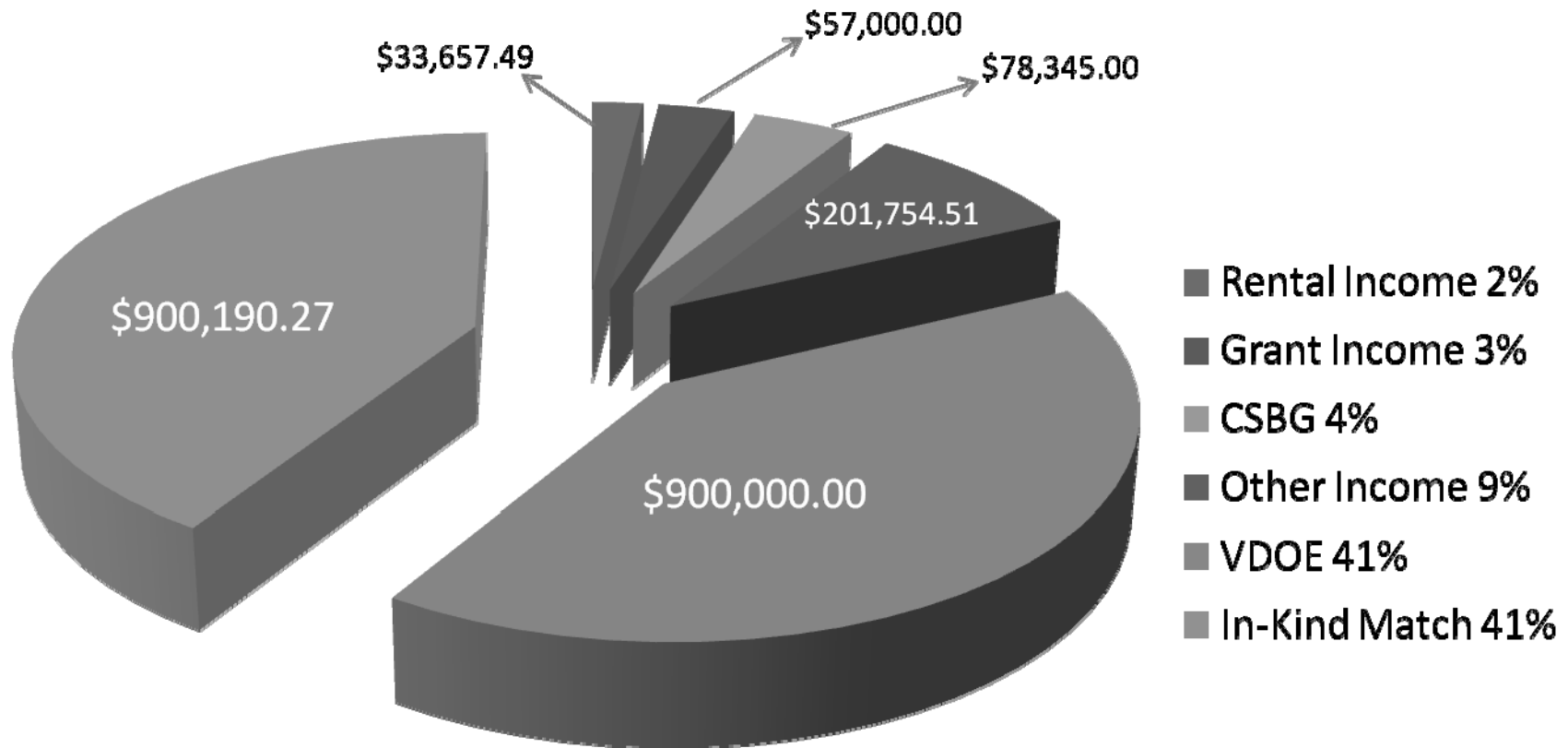
On the Road: Sallie Mae  
College Bus Tour



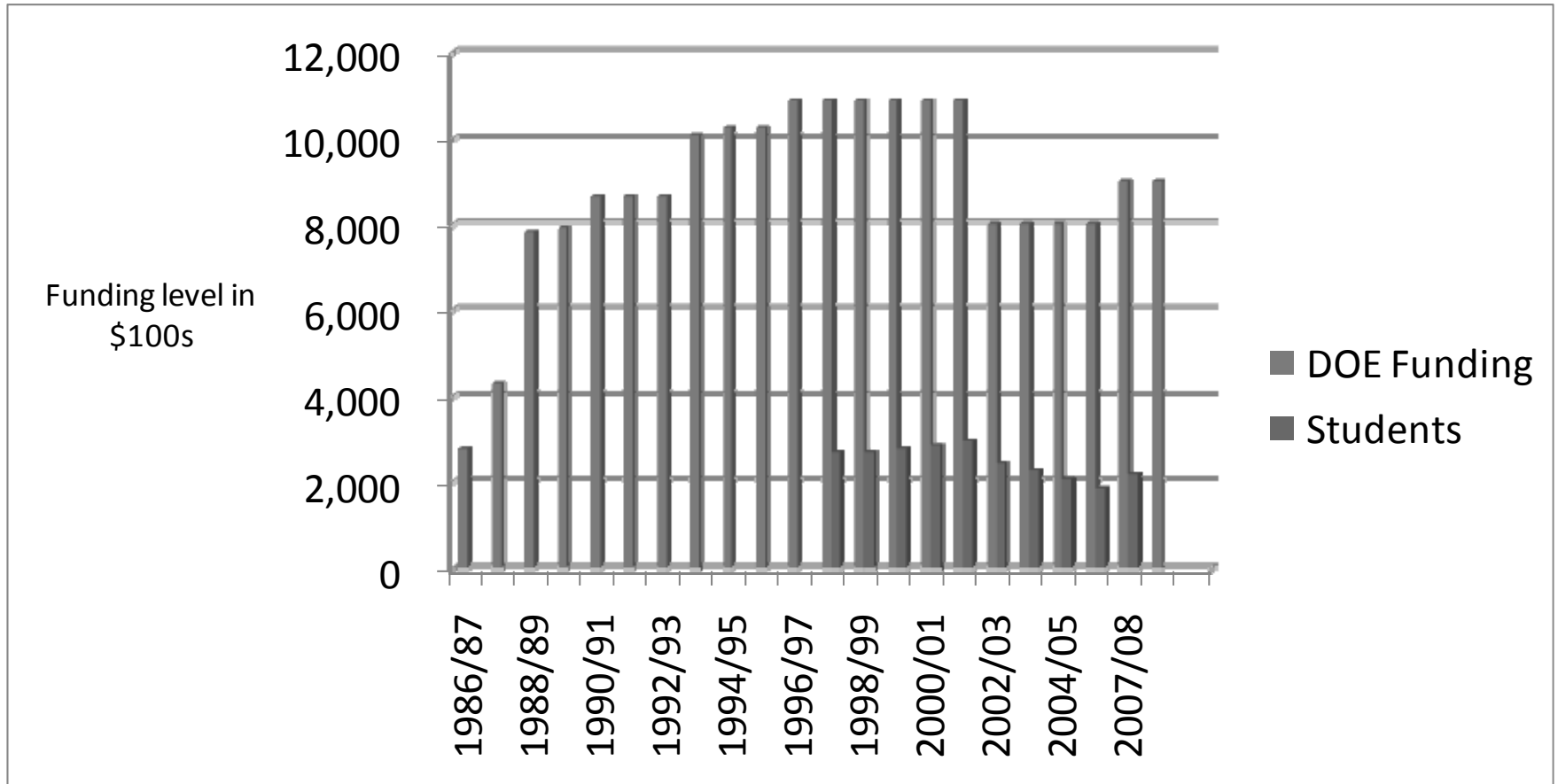
## Top College Picks in Last 10 Years

1.	Virginia Commonwealth University	378
2.	Norfolk State University	349
3.	Old Dominion University	305
4.	Virginia State University	295
5.	Northern Virginia Community College	264
6.	Danville Community College	197
7.	Piedmont Community College	158
8.	Virginia Polytechnic Institute and State University	127
9.	George Mason University	124
10.	Southwest Virginia Community College	121
11.	Virginia Union University	117
12.	University of Virginia	107
13.	Hampton University	104
14.	Northern Virginia Community College – Annandale	100
15.	Radford University	99
16.	J. Sargeant Reynolds Community College	87
17.	Virginia Western Community College	82
18.	Southside Virginia Community College	79
19.	James Madison University	72
20.	Tidewater Community College	70
21.	Longwood University	69
22.	Thomas Nelson Community College	68
23.	Virginia Highlands Community College	55
24.	Central Virginia Community College	51
25.	Eastern Shore Community College	51
26.	John Tyler Community College	50

# Project Discovery Funding Sources

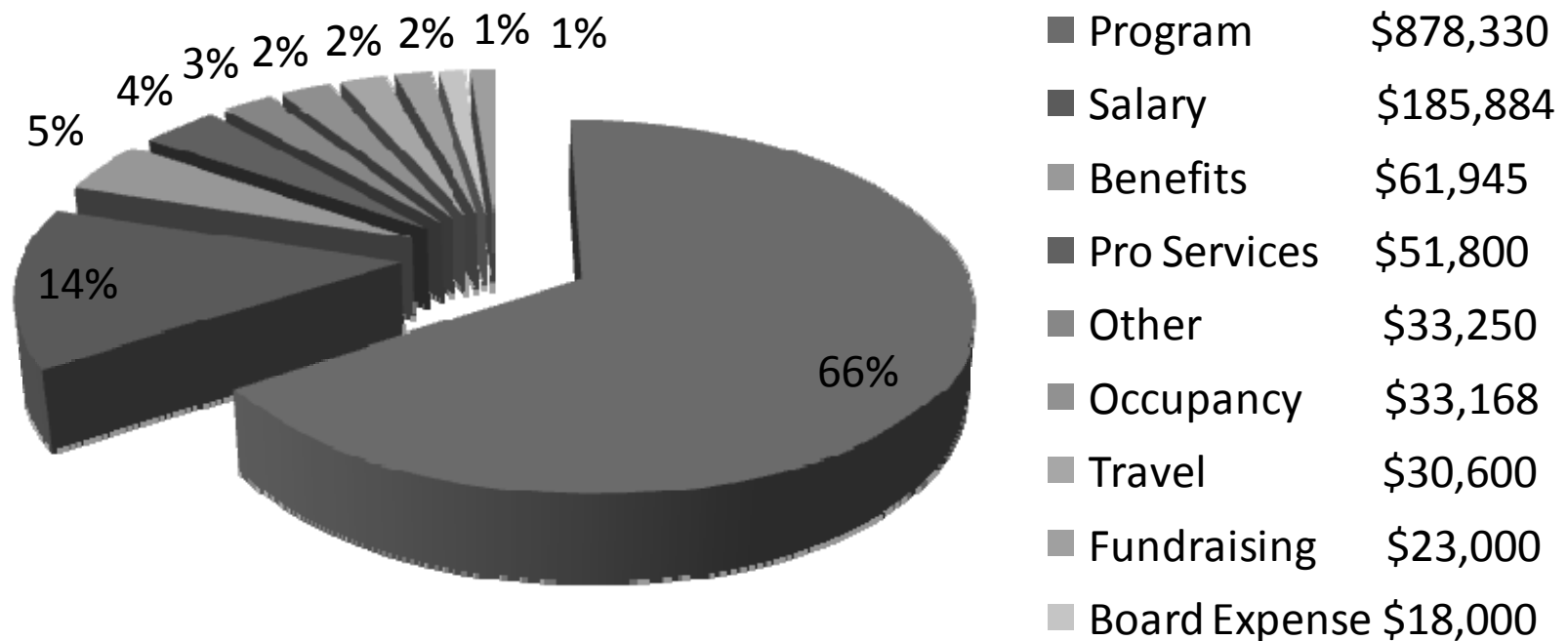


# Funding Level and Students Served





# Project Discovery Expenses





# Annual Savings and Income Benefits to The Commonwealth of Virginia

Virginia prison population is expected to increase by 6,700 over the next 5 years\*  
Annual increase would be 1340. 5% of this increase is 67.

Annual per capita cost of incarceration in Virginia is \$21,248. \*\*

High school drop-outs are 8 times more likely to be in jail than graduates \*\*\*

If Project Discovery can keep just 5%, or 67 people, out of jail, Virginia will save

\$ 1,423,616

Medium income for a high school drop out is \$14,146. They pay \$707.30 in tax \*\*\*\*

While they are incarcerated Virginia will lose tax revenue of

\$ 47,389

Medium income for a person with an Associates Degree is \$31,893. They pay \$1,594.65 in tax \*\*\*\*

If 67 students earn Associates Degrees Virginia will earn additional tax of

\$ 106,842

Total annual savings and income to Virginia if 67 students participate in  
Project Discovery, graduate, and receive Associates degrees.

**\$ 1,577,845**

Project Discovery cost per student is less than \$950.00 per year. Total cost for 67 student is approximately

\$ 63,350

## Data Sources

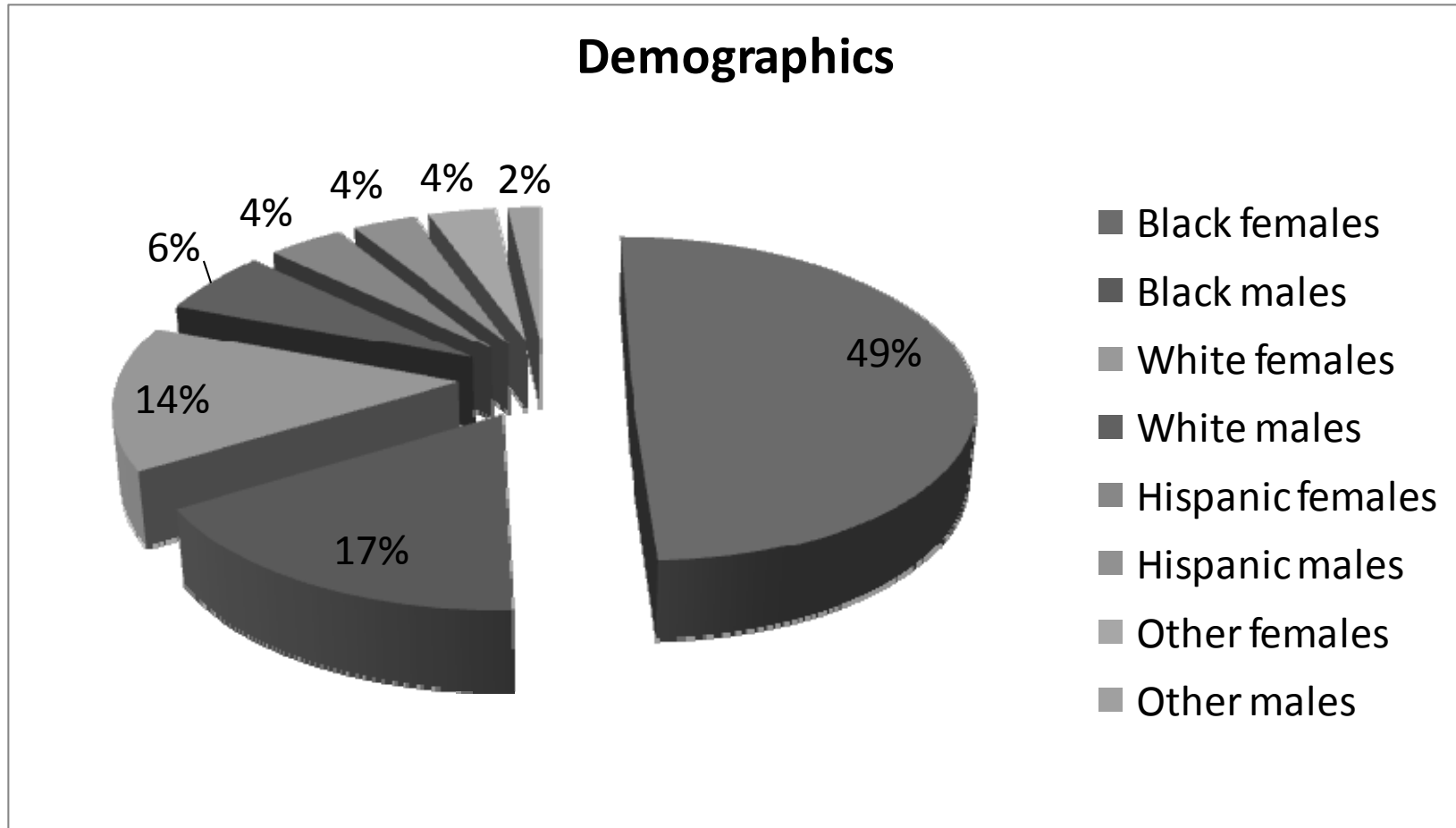
\* USA Today, January 14, 2008

\*\*Virginia Department of Corrections 2005 Statistical Summary

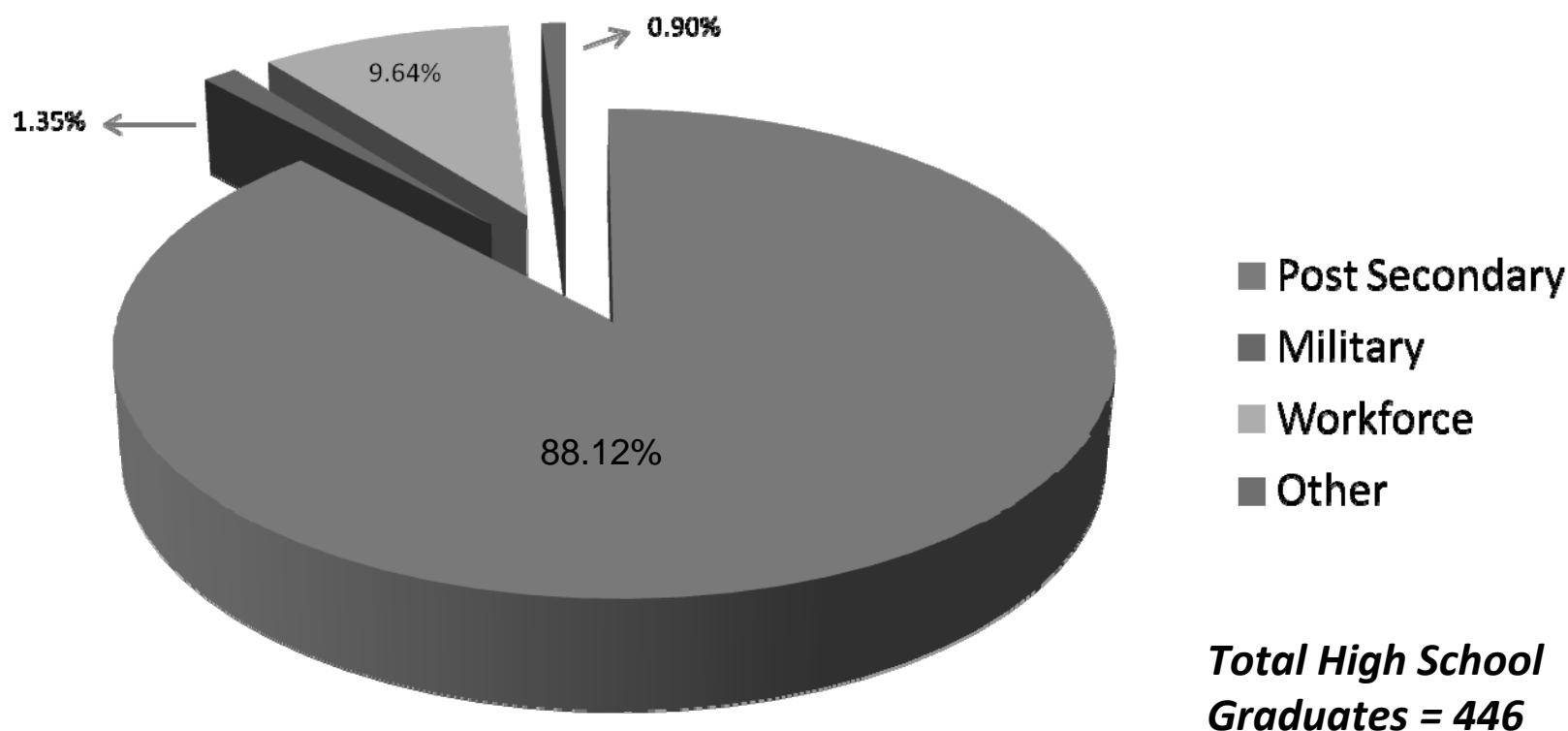
\*\*\*Bill and Melinda Gates Foundation "The Silent Epidemic", March 2006

\*\*\*\* US Census, 2005

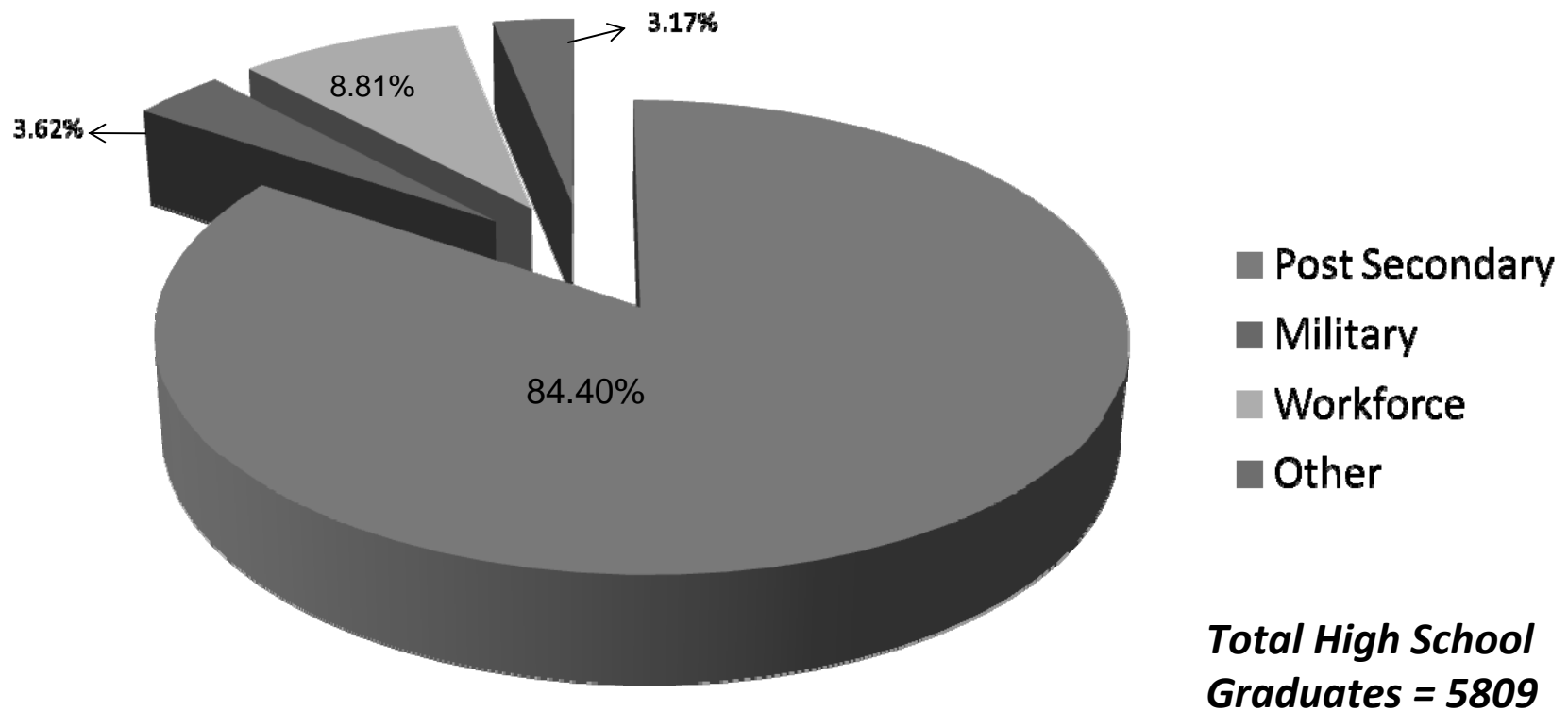
# OUR STUDENTS



# RESULTS FOR 2006-2007 PROGRAM YEAR



# TEN YEAR RESULTS





# New Initiatives

## ***A pilot program for young black men***

Partners with William Fleming High School, Roanoke City Schools, and Total Action Against Poverty to provide an enriched and challenging school environment for 20 young black men

A four year program to start in their freshman year and follow them through high school

## ***STEM Training and education for young women***

Partners with Virginia Tech and Radford University to provide summer camps, scholarships, mentoring, and educational opportunities to young women in Science, Technology, Engineering, and Math

## ***Virginia Athletes for Education***

Partner with Virginia athletes to provide mentoring and inspirational programs for students

Become a fundraising vehicle for Project Discovery

