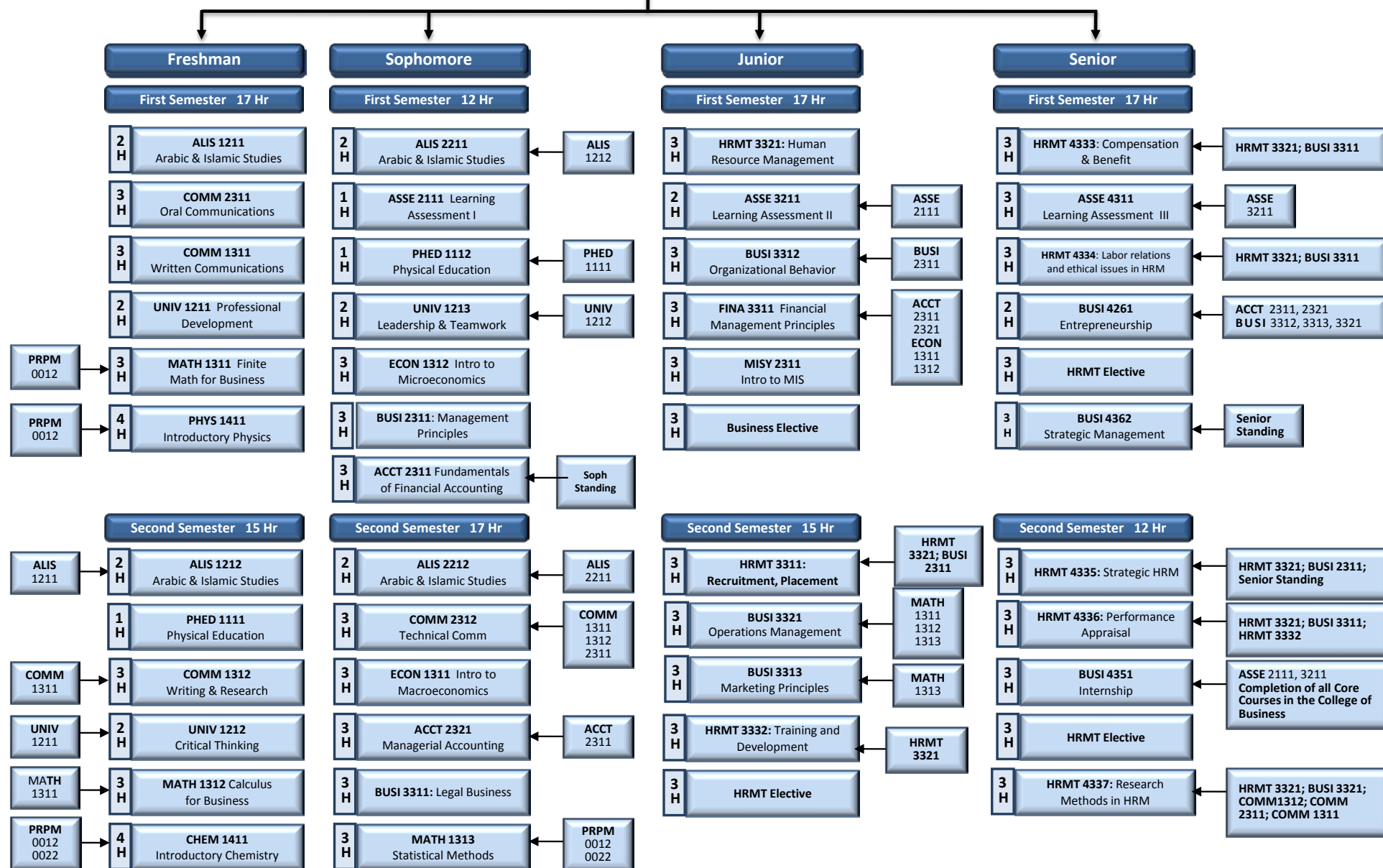


# PMU: College of Business - Human Resource Management Degree Plan ( 128 Credit Hours )



**Business Elective:** BUSI 3341: Advanced Statistical methods; BUSI 3331: Business Negotiations;  
**HRMT Elective:** HRMT 3333: Organizational Development & Change (**Pre-requisite:** BUSI 2311; HRMT 3321; BUSI 3312); HRMT 3334: Negotiation & Conflict Management (**Pre-requisite:** none); HRMT 4322: Human Resource Information Systems (**Pre-requisite:** Senior standing; HRMT 3321; MISY 2311); HRMT 4338: Human Resource Planning (**Pre-Requisite:** HRMT 3321); and HRMT 4339: International Human Resource Management (**Pre-requisite:** HRMT 3321)

