



# LOGISTIC & SERVICES

[www.kslog.com](http://www.kslog.com) Unterwegs in den besten Händen

## Company Profile



<b>Foundation</b>	1990 in Zwickau
<b>Management</b>	Uwe Konze
<b>Branches</b>	D-54427 Kell am See D-58239 Schwerte D-20259 Hamburg D-99735 Großwechsungen D-04356 Leipzig D-08056 Zwickau D-03238 Finsterwalde
<b>Managed Area</b>	105.000 m <sup>2</sup>
<b>Line of Business</b>	National and international logistics, forwarding- and trucking company, providing a variety of services like warehouse, production-related services and commissioning.
<b>Staff</b>	400 employees, including freelancers, and auxiliaries.
<b>Vehicle Fleet</b>	90 company-owned vehicles, a fixed contingent of about 40 common carriers, tractor units rigid trucks with trailer, hydraulic lift trucks with HAZMAT kit, truck-mounted forklifts, and transport permits according to § 49 par. 1, § 50 par. 2 No. 1 KrW-/AbfG.
<b>Partners</b>	ONLINE Systemlogistik, CTL Cargo Trans Logistik AG, ELVIS Teilladungssystem GmbH, Kombiverkehr, and a wide variety of partners for regional operations



# LOGISTIC & SERVICES

[www.kslog.com](http://www.kslog.com) Unterwegs in den besten Händen

## ***Corporate Concept***

Our customers benefit from a keen combination of logistics- and forwarding services, including a clear, fast, and flexible execution achieved by simplifying the process chain and minimizing the number of involved parties.

We support our customers in every step of the supply chain, from consulting, concept developing, cost comparison method, project planning to the realization of all mutual set goals. Many of such complex logistics concepts have already been implemented in the past. These include the management of a consignment warehouse, final ware processing, complete dispatch area processing with a direct link to production and high-bay storage. All goods are commissioned for dispatch and are delivered dead on time. We take over many tasks that are normally the core competence of our client.

All logistics projects are linked to the customer-specific electronic data processing system to ensure permanent and transparent flow of information.

This kind of execution improves all business processes, increases productivity and quality, facilitates administration, and reduces costs. All in all, our customer's competitive ability is significantly raised.

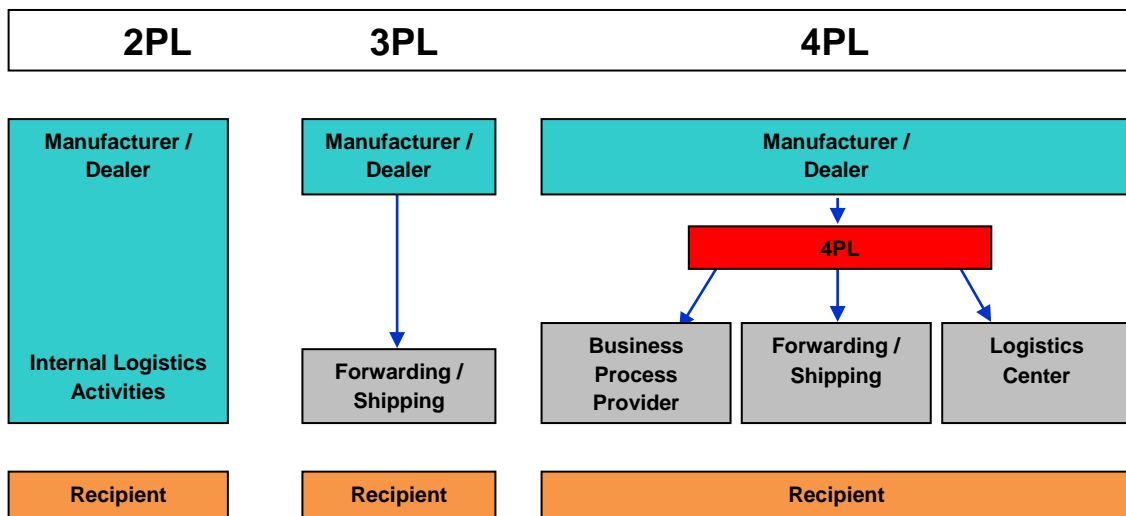


# LOGISTIC & SERVICES

[www.kslog.com](http://www.kslog.com) Unterwegs in den besten Händen

***We offer customized logistics concepts***

**from 2PL to 4PL**



**from A to Z**

Administration, Assignment-Call-Center  
Commissioning, Conception  
Consulting  
Disposal Logistics, Disposition  
Information Logistics  
IT-Solution  
Maintenance Logistics  
Outbound Logistics  
Procurement Logistics  
Production Logistics, Production-related Services  
Project Planning, Sales Organization  
Spare Parts Logistics  
Supply Chain Logistics, Supply Chain Management  
Tracking & Tracing  
Transport Logistics  
Warehouse Logistics, Warehouse Management



# LOGISTIC & SERVICES

[www.kslog.com](http://www.kslog.com) Unterwegs in den besten Händen

## ***Short Description of our Logistics Services***

KS-Logistic offers procurement, warehouse, production, transport, spare parts, outbound and disposal logistics services, customized to the needs of our customers and their whole supply chain.

KS-Logistic's field of activity begins at the end of the production process with production-related services and ends with the delivery to the recipient. All steps between these like warehousing, commissioning, production-related services, and administration are included. We also handle procurement logistics, parts of the supply management based on framework contracts with the suppliers, spare parts distribution for service technicians all over Europe. as well as elements of disposal logistics.

### **„Customer-oriented and cost-effective provision“**

**the **right** product**

**at the **right** time**

**at the **right** price**

**at the **right** place**

**in the **right** quantity**

**in the **right** quality**



# LOGISTIC & SERVICES

[www.kslog.com](http://www.kslog.com) Unterwegs in den besten Händen

## ***Assignment-Call-Center***



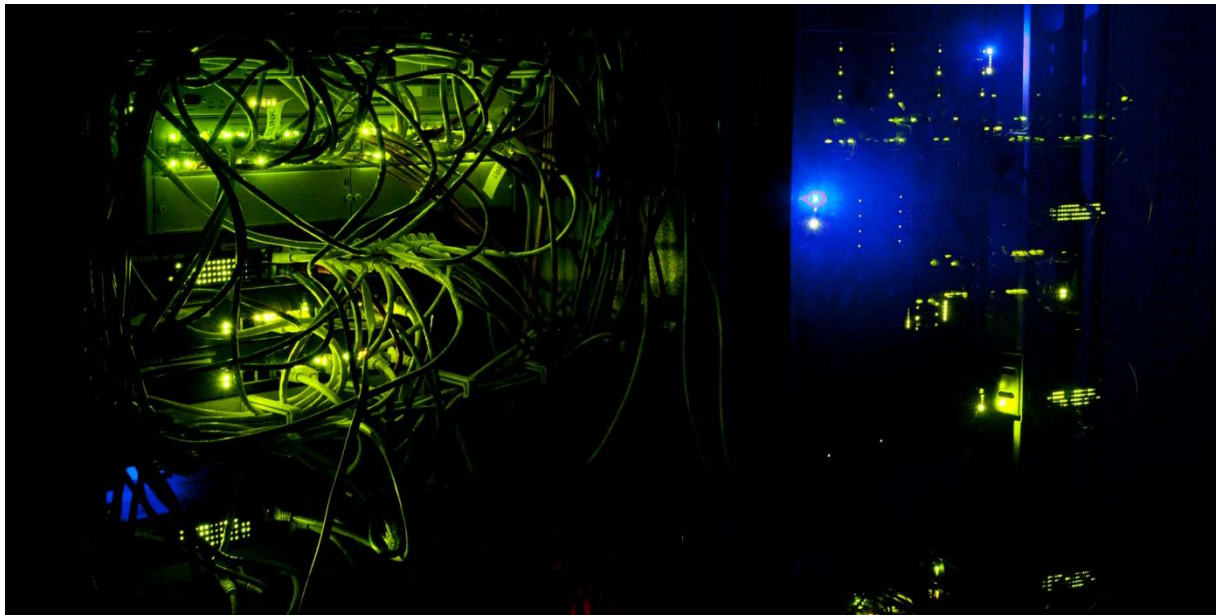
KS-Logistics more and more involves itself in the order processing of its customers to generate cost, time and labor benefits. For example, all orders can be taken by our assignment-call-center via phone, fax, email, and Internet.



# LOGISTIC & SERVICES

[www.kslog.com](http://www.kslog.com) Unterwegs in den besten Händen

## ***IT-Service and Supply-Chain-Management (SCM)***



We always keep you up-to-date. We guarantee permanent information flow for all persons involved in the IT-process by connecting with the customer-specific electronic data processing systems.

We offer support and consulting for planning and execution of our joint processes.

We use either our customer's ERP-system (Enterprise-Resource-Planning) as integral part of the supply chain, or offer the use of our in-house systems.





# LOGISTIC & SERVICES

[www.kslog.com](http://www.kslog.com) Unterwegs in den besten Händen

## ***KS-Logistic Web-Order***



Our web-order system manages all transportation movements from dispatch to handover. The ERP-system can generate a link that provides all necessary information to answer, for instance, a request for a delivery or transport status update.

### **Commissioning**

This tool processes and monitors transport orders outside of the ERP-system. Especially the supplier's transport applications can be monitored by the customer.

### **Tracking & Tracing**

Wholesale shipment tracking is getting more and more important. Our online tracking and tracing tool provides you with up-to-date information about the delivery status and a complete shipment history. This way, you can follow your order in detail with the help of, for example, a transport ID, a shipping- or delivery status.

### **Shipment Documents**

Our Electronic POD (Proof of Delivery) provides you with online access to all your order's shipment documents. The electronic shipment data is completed by a signature and the name of the consignee in block letters.



# LOGISTIC & SERVICES

[www.kslog.com](http://www.kslog.com) Unterwegs in den besten Händen

## ***Transport Logistics***



Our logistics products – the network of all transport carriers – and our electronically controlled services guarantee a smooth execution. Your goods will reach their destination without incident and you will be able to follow them every step of the way.

### **Procurement Logistics**

Procurement logistics deals with all logistic tasks concerning the flow of good's preparation, execution, and monitoring from supplier to recipient.

Depending on the agreed incoterms, the range of control can cover the whole process, from delivery of products to receipt and acceptance of goods, product testing, initial warehousing, and internal transport to the place of consumption. All connected planning, controlling, and monitoring issues are covered, too.

### **Outbound Logistics**

Outbound logistics is the last part of the supply chain ensuring the delivery of the finished ware to the various markets. For a joint success, meeting the agreed conditions like lead time, reliability, and quality, is essential. Therefore the logistics costs should be transparent and calculable at all times without sacrificing quality.





# LOGISTIC & SERVICES

[www.kslog.com](http://www.kslog.com) Unterwegs in den besten Händen

## ***Air- and Sea Freight***



### **Air Freight**

Service options for air freight:

- import- and export service
- customs declarations and settlement of all clearance formalities
- door to door / door to airport / airport to airport / airport to door  
(from and to every location worldwide)
- express- or economy conditions

### **Sea freight**

Cargo transportation by sea is today's most economical way of hauling intercontinental wares all over the globe. KS-Logistic offers its customers a complete sea freight procedure through an international network and with local contact services. We transport your wares from every place on earth to the consumer, including settlement of all clearance formalities and, if necessary, unloading of the containers at one of your branches.



# LOGISTIC & SERVICES

[www.kslog.com](http://www.kslog.com) Unterwegs in den besten Händen

## ***Warehousing***



We optimize your stocks with you and create new opportunities. We raise the quality of your logistics and coordinate your demands in the supply chain.

Our flexible multi-user-warehouses offer economic conditions and effective use of storage capacity, even for complex demands like dedicated warehouses.

Our standardized processes and state-of-the-art-IT-systems can be customized to the needs of our partners. This guarantees effective warehousing and the realization of all desired goals. We integrate several warehousing services like procurement- and outbound logistics, and offer a variety of commissioning procedures and storage strategies (e.g. FIFO)

Individual requests are processed manually or automatically. These value added services facilitate a consistent complete solution. We service all enterprise sizes and offer optimal solutions for everything from simple storage to fully automated high-bay warehouses.



# LOGISTIC & SERVICES

[www.kslog.com](http://www.kslog.com) Unterwegs in den besten Händen

## ***Logistic Consulting***



In order to stay competitive an effective supply chain, which adapts the flow of goods and distribution to the ever changing conditions is essential.

KS-Logistic analyzes your specific need and offers a customized concept that will shape and optimize the logistic services needed. This will result in a clear budget calculation and an effective service for you.

Our services include:

- molding your needs into definite projects
- support for planning and adjustment of your in-house IT
- constant control of key performance indicators (KPI)
- systematic quality control





# LOGISTIC & SERVICES

[www.kslog.com](http://www.kslog.com) Unterwegs in den besten Händen

## Value Added Services



With us, your wares are in good hands. In addition to transportation services and professional warehousing, we offer a variety of value added services: packaging, labeling, commissioning, finishing – we can take care of your good's final processing. The links to your EDP systems enable you to keep track of everything. Our customized logistics concepts will raise your productivity and efficiency.



Labeling



Assembly

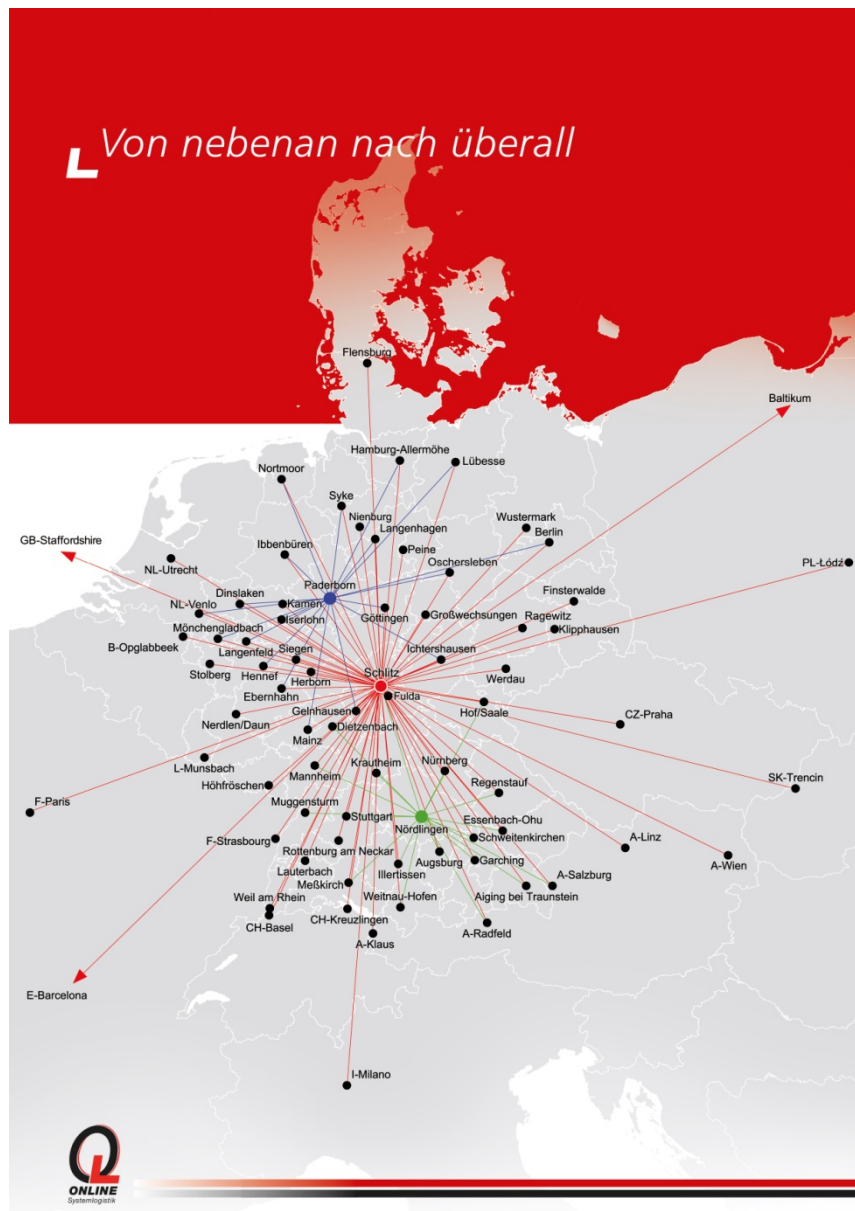


Controlling



Commissioning

## Network Structure





# LOGISTIC & SERVICES

[www.kslog.com](http://www.kslog.com) Unterwegs in den besten Händen

## **Overview of our branches**

### **Kell am See branch**

Kapellenstr. 39a  
D-54427 Kell am See  
phone: +49 6589 / 91921-0  
fax: +49 6589 / 91921-19

### **Schwerte branch**

Im Heiligen Feld 5  
D-58239 Schwerte  
phone: +49 2304 / 94216-0  
fax: +49 2304 / 94216-19

### **Hamburg branch**

Fruchtallee 15  
D-20259 Hamburg  
phone: +49 2304 / 94216-51  
mobile: +49 163 / 7340080  
fax: +49 2304 / 94216-951

### **Großwechsungen branch**

Hinter der Aue 8  
D-99735 Großwechsungen  
phone: +49 36335 / 420-0  
fax: +49 36335 / 420-29

### **Leipzig branch**

Am Alten Flughafen 1  
D-04356 Leipzig  
phone: +49 341 / 900325-0  
fax: +49 341 / 900325-29

### **Zwickau branch**

Herschelstraße 7  
D-08056 Zwickau  
phone: +49 375 / 39002-0  
fax: +49 375 / 39002-96

### **Finsterwalde branch**

Gröbitzer Weg 36  
D-03238 Finsterwalde  
phone: +49 3531 / 79700-0  
fax: +49 3531 / 79700-19