

LATIN PATRIARCHATE  
OF JERUSALEM

PROJECT PROPOSAL

ARCHANGEL MICHAEL NURSING HOME  
PAPHOS, CYPRUS

GA 068/16



GENERAL ADMINISTRATION  
PROJECT DEVELOPMENT OFFICE  
AUGUST 2016

*"A Little Bit of Mercy Makes the World  
Less Cold and More Just."*

*(H.H. Pope Francis)*

## THE LATIN PATRIARCHATE

The Latin Patriarchate of Jerusalem (LPJ) was restored in 1847, and since then is promoting the best interests of the local communities it serves. Today, the Patriarchal Diocese oversees about 150,000 faithful in four countries, Israel, Palestine, Jordan and Cyprus, covering a rich tapestry of cultures, languages, religions and traditions. Serving all with special emphasis on the support and care of indigenous Holy Land Christians remains the enduring mission of the Mother Church, the Latin Patriarchate of Jerusalem.

## ST. PAUL'S CATHOLIC PARISH IN PAPHOS, CYPRUS

The Parish covers the Paphos region on the west coast of Cyprus including the towns of Paphos, Polis and Pissouri, where regular masses are held.

The parish is composed of a lively Catholic community of people from all walks of life and many countries. The parish office and Hospice Shop – which also serves as a coffee shop, are close to the church, making a focal point for meeting tourists, parishioners and local people. The Sisters of St. Bruno and Bethlehem have a small convent at Mesa Chorio. At the same location, there is a cemetery with the chapel of SS. Cosmos and Damian.

The people of Cyprus are broadly divided into two main ethnic communities: Greek Cypriots and Turkish Cypriots; who share many cultural traits but maintain distinct identities based on ethnicity, religion, language, and close ties with their respective motherlands. Before the dispute started in 1974 the people of Cyprus (then 77% Greek Cypriots, 18% Turkish Cypriots, 5% other nationalities, including Armenians and Maronites) were dispersed over the entire island.

### The Parish Office

The new Latin Parish office is situated upstairs in the No. 2 Hospice shop by the Agia Kyriaki Church. It is open from Monday to Friday from 9.00 AM, with always one priest available.

The parish is a very active one, many parishioners are from the UK and other expat retirees. They ensure that all second hand shops have a good income, which is entirely reverted to social projects and the hospice. The parishioners are about 1.000 people, plus around 290 migrants from many faiths.

The volunteers along with Caritas Cyprus maintain a very alive spirit of cooperation and charity among the Paphos residents.

Most of the revenue of the parish comes from donations from the expat community, from the sales of the second hand shops, from Caritas Cyprus and individual donors who collaborate intensively to make building of the hospice possible, and the maintenance of the social and humanitarian support efforts on the island.

### **Greek Speaking Parishioners**

There is a Greek speaking monthly bulletin. The distribution is free of charge, and it informs on matters of faith, liturgy and culture.

### **Cultural Representation**

The people in the parish come from many diverse cultures, bounded together by the Christian Catholic faith. It is important that all these groups are represented in the parish.

## **LOCATION/ DEMOGRAPHICS**

- Total population of Cyprus: 1.144 million
- Total population of Paphos: 55.000
- Christians in Paphos: 95% of total
- Roman Catholics: 1%
- St. Paul parishioners: 1.600
- Migrants helped by the parish: 220



## **PROJECT DESCRIPTION**

The Latin Patriarchate of Jerusalem is intending to complete the construction works of the middle floor at Archangel Michael Hospice, offering a new quality nursing and care home in Cyprus ([www.archangel-michael-hospice.com](http://www.archangel-michael-hospice.com)). The hospice is fully operational, and supported by charitable giving. The creation of a quality nursing and care home as an inclusive part of this major development, would provide much needed funds to help with the hospice running costs. It is envisaged that the current unpaid trustees of the hospice will oversee the project, ably supported by the hospice general management.

Currently, the government of Cyprus does not provide a National Health Service; support in the community is spasmodic to say the least, and current care facilities fall well short of acceptable standards. People that require specialist nursing care have very few options open, this can cause problematic bed blockage in the state hospitals, which creates issues for others requiring care; alternatively, relatives and carers struggle at home, with little support to cope.

The project proposes to create a nursing and care home in Cyprus that will offer a familiar and healthy environment for the elderly; thus providing a better quality of life through assistance in health care, which includes nursing care, medication, hygiene, physical therapy, nutrition, human and psychological support and other needs.

The new facility will be located in the middle floor of the present Archangel Michael Hospice building, offering both residents and employees a comfortable living environment, in a pleasant location and beautiful hill top scenery. The place will allow the seniors to interact and stay in touch with new people through different activities like singing, dancing, games and watching TV.

The elderly residents in the Nursing Home will also be engaged in social interactions with diverse groups such as school students, youth and ecclesiastical movements. The home care will provide a mini bus for day trips and hospital visits and will be managed on Christian principles, but all religions will be welcome and catered for, a chapel on the hospice floor will be also available.

## **BENEFICIARIES**

The direct beneficiaries of the project will be:

1. The elderly people who would like to live their last years of life in a cozy and healthy environment and spend their lives with people their age. Numerous elderly people are in need of quality assistance and an elderly home care to live in. The elderly people are being left alone without any care due to the emigration of younger generations. The demand on such a place in Cyprus is very high lately, and people are looking forward to the opening of the home care in order to register in it.
2. Archangel Michael Hospice for terminally ill patients will be benefited from the income of the elderly nursing and care home. It will help support the daily running costs of the hospice, which will provide a much needed facility in Paphos, and in the wider community of Cyprus in general.
3. Creating job opportunities: The home will be staffed by 17 registered nurses enabling intensive care. The kitchen will provide staff to offer full and flexible catering. Medical cover will be provided by the patient's own GP's/ consultants supported by the doctors of the hospice.
4. The Latin Patriarchate of Jerusalem strives to provide the best for all faithful and people in need, regardless of their religious affiliation, and to allow the continuity of the LPJ biblical mission in serving its communities in the Holy Land.

## **SCOPE OF WORK / FACILITIES**

The new project proposes to complete the construction of the rooms and facilities of the nursing home. The work consists of two parts: the first one will include finishing all civil, electrical mechanical and infrastructure works; and the second is to provide all the rooms and facilities with furniture and fittings.

Facilities that will be offered:

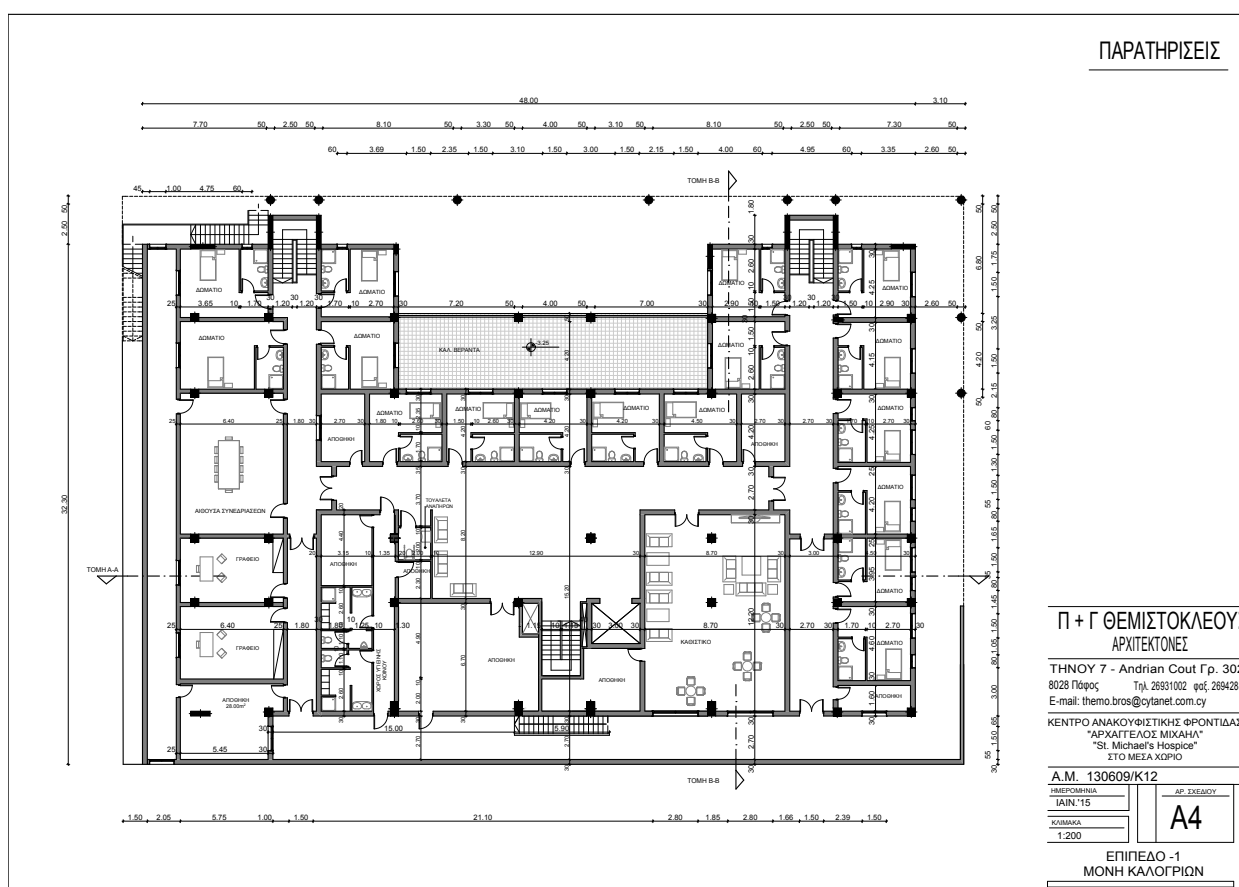
- 15 en-suite bedrooms, all with sea/mountain views.
- Day room.
- Lounge and sitting area.
- Fully fitted commercial kitchen.
- Pharmacy, dressings area, linen storage area.
- Small kitchen for visitors to make tea's etc.

- Television/ entertainment room.
- A facility will exist for visitor overnight accommodation when appropriate.

## EXECUTION/DURATION

The local technical team have prepared all the necessary detail designs and budgets for this project. The completion of work will require 9 months from starting date. More details are available up on request.

## DESIGN PLAN



## PROPOSED BUDGET

Item	Description	Total Amount in EUR
1	Civil Works	264,000
2	Electrical Works	100,000
3	Mechanical Works	147,000
4	External Works	9,000
5	Furnishings	270,000
6	Unforeseen Matters	25,000
Subtotal		<b>815,000</b>
7	Vat Expenses 19%	154,850
8	Design, planning and supervision 3%	24,450
GRAND TOTAL IN EUR		<b>EUR 994,300</b>
GRAND TOTAL IN USD (Exchange Rate: EUR 1.00 = USD 1.13)		<b>USD 1,122,764</b>

For further information, please contact the Project Development Office.



## PHOTOS

### Archangel Michael future Nursing Home





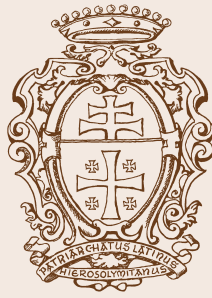


## Archangel Michael Hospice









## LATIN PATRIARCHATE OF JERUSALEM

Rev. Fr. Imad Twal  
General Administrator

General Administration Office  
Jaffa Gate, P.O. Box 14152  
Jerusalem 9114101  
Tel. + 972 2 6282323  
E-mail: [ceo@lpj.org](mailto:ceo@lpj.org)  
[www.lpj.org](http://www.lpj.org)

