



The Waldorf Hilton

Wedding Proposal

Congratulations on your recent engagement!

Thank you for your interest in hosting your most memorable event with us at The Waldorf Hilton, London. We are located in London's most desirable location bridging the West End with the City financial district.

We are delighted that you are considering our hotel as the venue for your Wedding. Every Wedding here at The Waldorf Hilton is unique and tailor made to suit individual requirements. Please find enclosed a full proposal detailing the initial costs for your special occasion.

We would love to invite you to view the Hotel Facilities and to start creating your wedding. Please do not hesitate to contact us with the most convenient time for your visit.

Thank you again for your interest in The Waldorf Hilton and we look forward to welcoming you soon and planning your special day!

Kindest Regards,

Rachel Robinson

Weddings and Social Events Executive

Tel: 0207 759 4021

Fax: 0207 240 9277

Email: rachel.robinson@hilton.com





The Waldorf Hilton

Where it all begins...

At The Waldorf Hilton

The Waldorf Hilton has celebrated a landmark anniversary of 108 years on from its grand opening in 1908. An iconic landmark in London's historic centre, this is the place in which to enjoy 21st Century comforts against a backdrop of exquisitely restored splendour. To learn a bit more about our rich history please visit <http://www3.hilton.com/en/hotels/united-kingdom/the-waldorf-hilton-london-LONWAHI/about/history.html>.

It is located in one of London's most enviable locations, bridging the West End with the City financial district, making it ideal for both business and leisure. It is 5 minutes walk from Covent Garden Market and 10 minutes walk from Trafalgar Square and the London Eye.





The Waldorf Hilton



Advantages of booking with Hilton

- *An online tool to help you – With the Waldorf Hilton, London, we create personalized links to make it easier for your guests to book online and pay directly with us. Please contact your wedding planner for more information!*
- *Earn HHonors bonus points for your booking - With the Hilton HHonors® Event Bonus program, you can earn HHonors Points and Miles™ toward travel when you hold your wedding at any participating Hilton Family hotel. So let your wedded bliss continue with a second honeymoon or weekend getaway at over 2,800 world-class hotels, aboard a large variety of international airlines. Just a little thank you for booking at Hilton.*

Accommodation

An allocation of bedrooms can be arranged for your guests to book with a saving on our best available selling rate. The unsold bedroom allocation will be released 28 days before the Wedding date to avoid any cancellation fees.

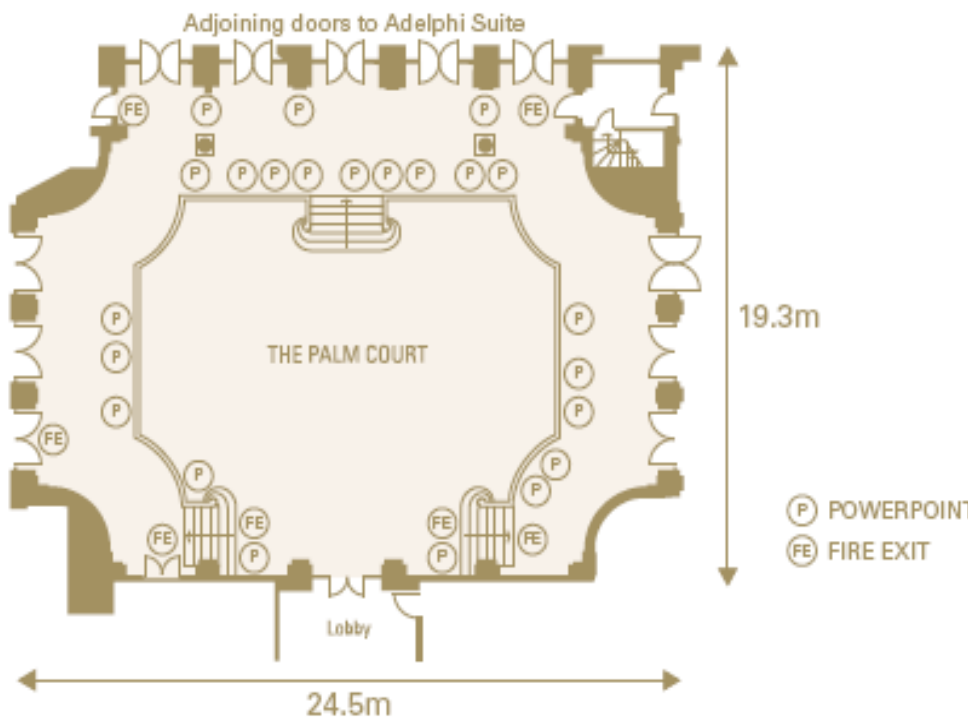


The Palm Court

Where better to turn back the clock?

Protected by The English Heritage and lovingly restored by Hilton to its 1908 Edwardian glory, the luxurious and famous Palm Court is a stunning venue for weddings, receptions, parties and dinner dances. The Palm Court was featured in the 1953 film 'Titanic' as the ballroom and the historic clock, original lanterns and sconces make it look the part for every event. It also boasts a private lobby, cloakroom and direct street access.

Floor Plan



The Palm Court

- | Boardroom
- | U-Shape
- | Theatre
- | Classroom
- | Cabaret
- | 180 Banquet
- | 410 Reception

Floor

Dimensions
L x W (H) m

Dimensions
L x W (H) ft

- Air conditioning
- 3 Phase Power
- Sound System
- | Blackout
- Natural Daylight
- | Dimmer

Capacities and dimensions



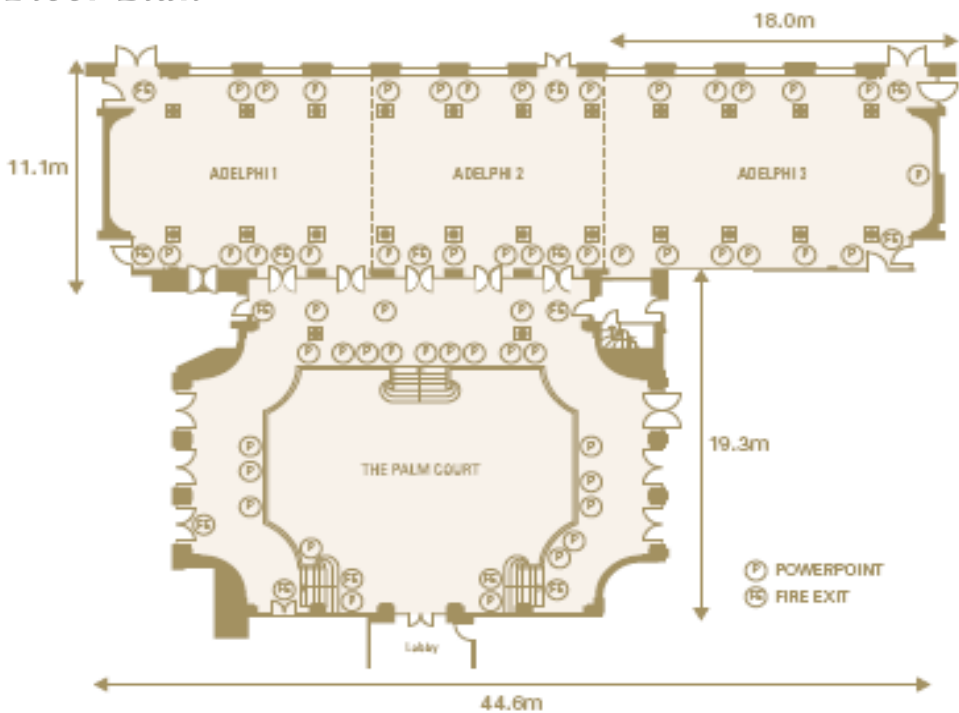


The Adelphi Suite

Perfect in every detail

The Adelphi Suite, with its state of the art lighting, is the perfect venue for conference, exhibitions and trade shows and dinner dances. This versatile suite can be separated into three separate rooms for use as syndicates, catering rooms or exhibition space. The Adelphi Suite as a whole can host up to 380 people in a banquet style or a glittering reception for up to 700 guests.

Floor Plan



Adelphi Suite	Adelphi Suite 1	Adelphi Suite 1 & 2	Adelphi Suite 3		
	30	68	30	Boardroom	
	30	68	30	U-Shape	
	100	260	100	Theatre	
	60	120	60	Classroom	
	56	110	56	Cabaret	
	380	200	100	Banquet	
	350	150	-	Dinner Dance	
	500	300	150	Reception	
	Ground	Ground	Ground	Floor	
	44.6 x 11.1 (2.8)	14.5 x 11.1 (2.8)	18.0 x 11.1 (2.8)	Dimensions L x W (H) m	
	146 x 36.4 (18)	46.3 x 36.4 (18)	59.0 x 36.4 (18)	Dimensions L x W (H) ft	
	•	•	•	Air conditioning	
	•	•	•	3 Phase Power	
	•	•	•	Sound System	
	•	•	•	Blackout	
	•	•	•	Natural Daylight	
	•	•	•	Dimmer	



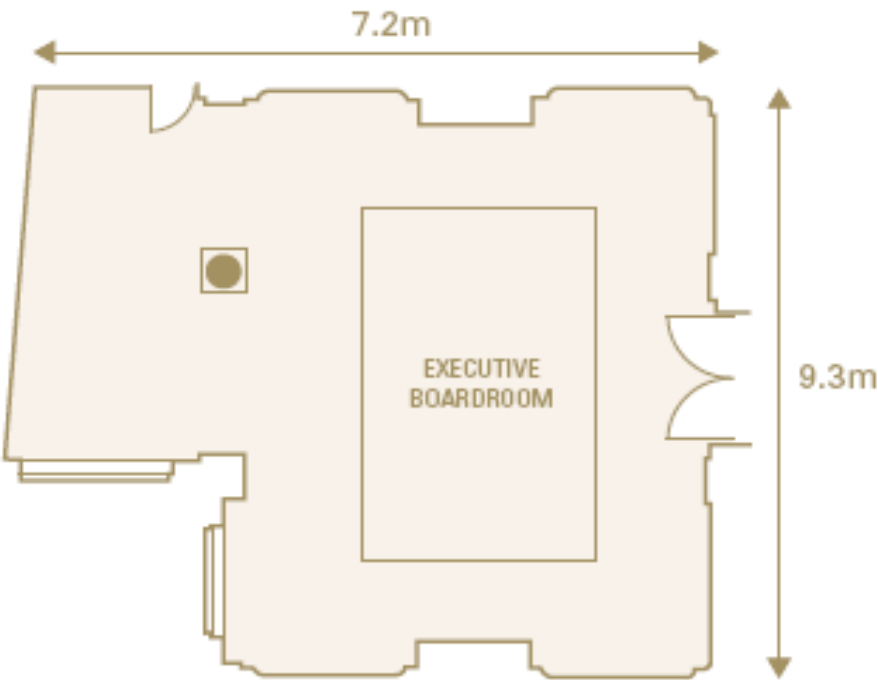


The Executive Boardroom

Old-style splendour that leaves an impression

The Executive Boardroom, with elegant oak panelling, formerly was the Gentlemen's smoking room and is perfect for private dining or intimate wedding receptions.

Floor Plan



Executive Boardroom

- 22 Boardroom
- 20 U-Shape
- 40 Theatre
- 20 Classroom
- 32 Cabaret
- 40 Banquet
- 1 Dinner Dance
- 50 Reception

Ground Floor

Dimensions
L x W (H) m

Dimensions
L x W (H) ft

- Air conditioning
- 3 Phase Power
- Sound System
- Blackout
- Natural Daylight
- Dimmer

Capacities and dimensions





The Waldorf Hilton

Wedding Packages

Silver Wedding Package

A Glass of Sparkling Wine on Arrival

~

Three Course Wedding Breakfast served with Tea and Coffee

~

2 Glasses of House Wine & ½ Bottle of Mineral Water

~

A Glass of Sparkling Wine to Toast the Bride and Groom

~

Personalised Printed Menu's

~

Place cards and Table Plan

~

Tea lights & Candelabras for all Guest Tables

~

Use of Cake Table and Knife

~

Cloakroom & Secure Storage Area for Wedding Gifts

~

Menu Tasting for the Wedding Couple

~

Wedding Co-ordinator to help plan your special day

~

Deluxe Room for Bride and Groom for night of the Wedding with Full English Breakfast the following morning

£125.00 per person - Minimum Numbers of 100





The Waldorf Hilton

Platinum Wedding Package

A Glass of House Champagne on Arrival or Soft Drinks

~

Selection of Crisps, Pretzels & Olives

~

Specialized Three Course Wedding Breakfast served with Tea and Coffee

~

½ Bottle of House Wine & ½ Bottle of Mineral Water

~

A Glass of House Champagne to Toast the Bride and Groom

~

Personalised Printed Menu's

~

Place cards and Table Plan

~

Tea lights & Candelabras for all Guest Tables

~

Use of Cake Table and Knife

~

Cloakroom & Secure Storage Area for Wedding Gifts

~

Menu Tasting for the Wedding Couple

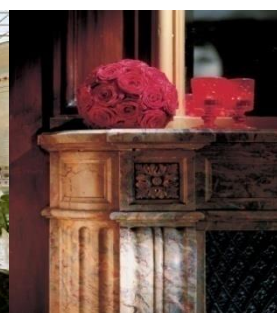
~

Wedding Co-ordinator to help plan your special day

~

Executive Room for Bride and Groom for night of the Wedding with Full English Breakfast the following morning

£145.00 per person - Minimum Numbers of 100





The Waldorf Hilton

Diamond Wedding Package

2 Glasses of Moët Champagne on Arrival or Soft Drinks

~

Selection of Three Hot & Cold Canapés

~

Tailor-made Exclusive Three Course Wedding Breakfast served with Tea, Coffee & Petit Fours

~

½ Bottle of Upgraded Wine & ½ Bottle of Mineral Water

~

A Glass of Moët Champagne to Toast the Bride and Groom

~

Personalised Printed Menu's

~

Place cards and Table Plan

~

Tea lights & Candelabras for all Guest Tables

~

White Chair Covers with Single Colour Organza Bow

~

Use of Cake Table and Knife

~

Cloakroom & Secure Storage Area for Wedding Gifts

~

Designed Menu Tasting for the Wedding Couple

~

Wedding Co-ordinator to help plan your special day

~

Suite for Bride and Groom for night of the Wedding with Full English Breakfast the following morning

£185.00 per person - Minimum Numbers of 100





The Waldorf Hilton

Dry Hire Package

Package Including:

Room Hire for Palm Court and Adelphi Suite

~

Cloakroom & Secure Storage Area for Wedding Gifts

~

Setup: Chairs, Tables, Staging and Dance floor

~

Deluxe Room for Bride and Groom for night of the Wedding with Full English Breakfast the following morning

~

Outside Catering List

Starting from £8,500.00 inclusive of VAT per day

Outside Caterers

The Waldorf Hilton have an extensive list of caterers in the UK we use for many events. Please inform us if you require our suppliers list.





Security

In order for us to comply with our Public Entertainment Licence, we require security personnel to be present for every 100 guests at a rate of £220.00 per guard. Security will be arranged through the hotel and charged to the final invoice.

Entertainment Licence

We have a licence for background or live music in the Palm Court until 10.30pm and for DJ's in the Adelphi Suite until midnight Sunday – Thursday and 1am Friday and Saturday.

Civil Ceremonies

We are fully licensed for Civil Ceremonies in our Palm Court, Adelphi Suite, Executive Boardroom and Aldwych Function rooms. We are licensed under Westminster Council and the Registrar Office would be delighted to talk with you about arranging your Ceremony here at The Waldorf Hilton. Details below:

The Register Office, The Old Marylebone Town Hall, Westminster Council House, 97-113 Marylebone Road, London NW1 5PT

Telephone: + 44 (0) 20 7641 1162

Email: registeroffice@westminster.gov.uk





How to get to us:

Tube station

Covent Garden (5min walk) Piccadilly Line

Temple (5min walk) Circle & District Line

Holborn (7min walk) Piccadilly and Central Line

Charing Cross (8min walk) Northern and Bakerloo Line

Train Stations

Kings Cross/St. Pancras (25min walk or on Piccadilly Line)

Waterloo (10min walk or bus no.4 from outside Waterloo Station to directly in front of the hotel)

Airports:

City – 8.4miles/13.0km

Heathrow – 17.9miles/29.0km

Gatwick – 28.4miles/45.0km

Stansted – 35.1miles/56km

By Car:

M11 (NE), Junction 4

M4 (W), Junction 1

M1 (NW), Junction 1

M3 (SW), Junction 1

