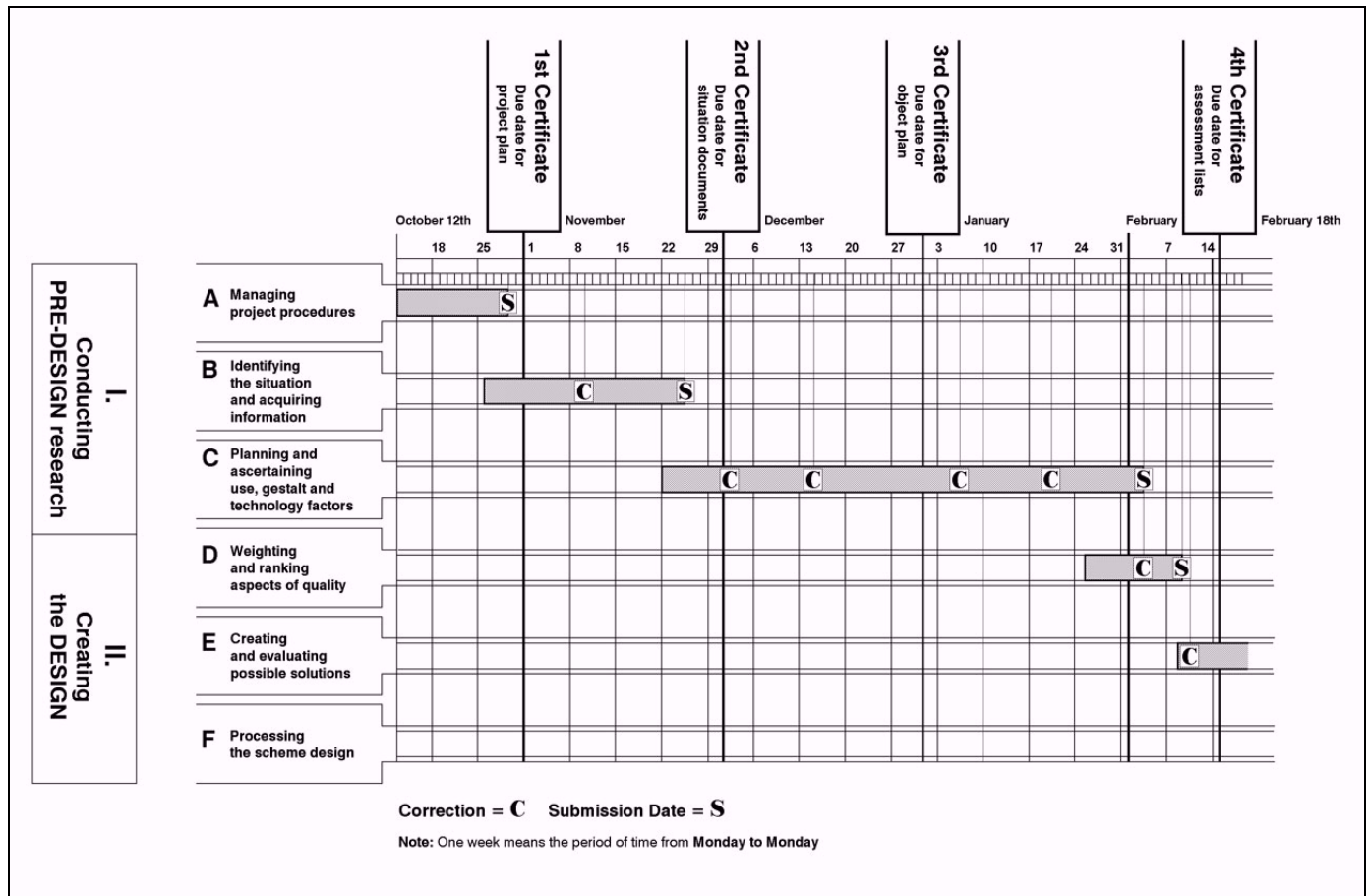


Project Timetable

MADE Project:	Dense low-rise residential building		
Module Result:	Project Timetable	Project Timetable	
Compiler:	Prof. Ralph Johannes, Dipl.- Ing., Architekt HBK (Berlin)	23	



Explanation: Project Timetable

The **Project Time-Schedule** serves to establish the deadline- and implementation planning of the teaching and student design process steps.

According to the 'Pattern' ([Link > Sample –Project Time-Schedule](#)) a histogram will be created for every complex **MADE Project** that is easy to use on account of its simplicity and clarity. It contains the following information: horizontally the time allocation (days, weeks, months), vertically the **MADE Phases** – along the lines of [MADE Process Plan](#). The established attestation deadlines are entered by way of a attestation symbol ([Link > Catalogue of Project Achievement](#)). In doing so, the student is in a position to see how much time is available between the fixed attestation deadlines in order to achieve the project learning goals according to the [Project Learning Results Catalogue](#).

A correction symbol denotes the correction of learning achievements.

The method of operation linked to the deadlines set allows for greater control, there are fewer 'surprises' meaning that one is able to study and design more efficiently.