



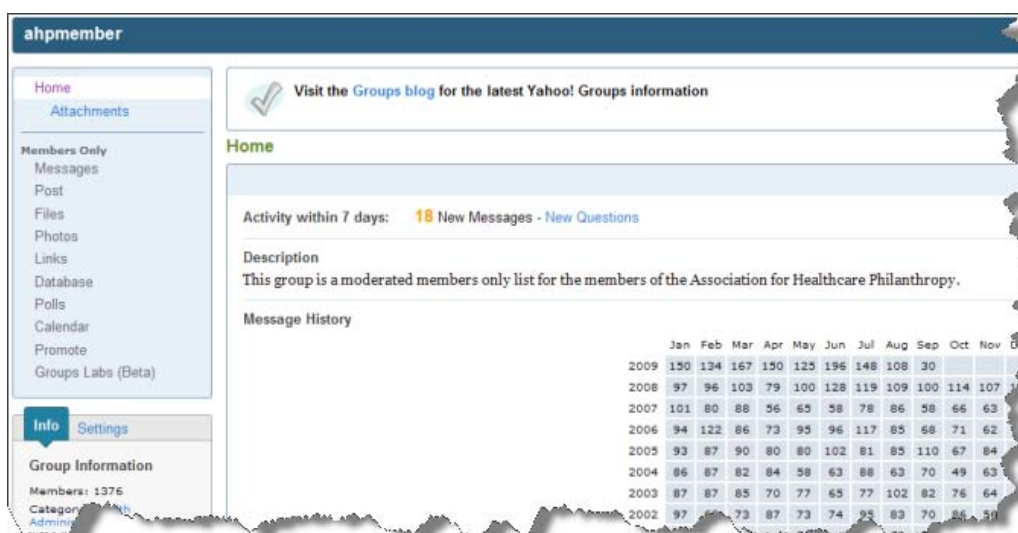
Organization Chart Samples for Healthcare Related Organizations

The organization charts on the following pages were received in response to the following question sent to the Association for Healthcare Philanthropy moderated Yahoo group:

"I am interested in getting some samples of organization charts for hospital or health care related Foundations.

If any of you are willing to share, please forward directly to me. I will remove names, combine into a single PDF and share these back with the list.

<http://health.groups.yahoo.com/group/ahpmember/>



In addition to responses received back from individual organization, there are a number of charts included from the AHP Resource Center.

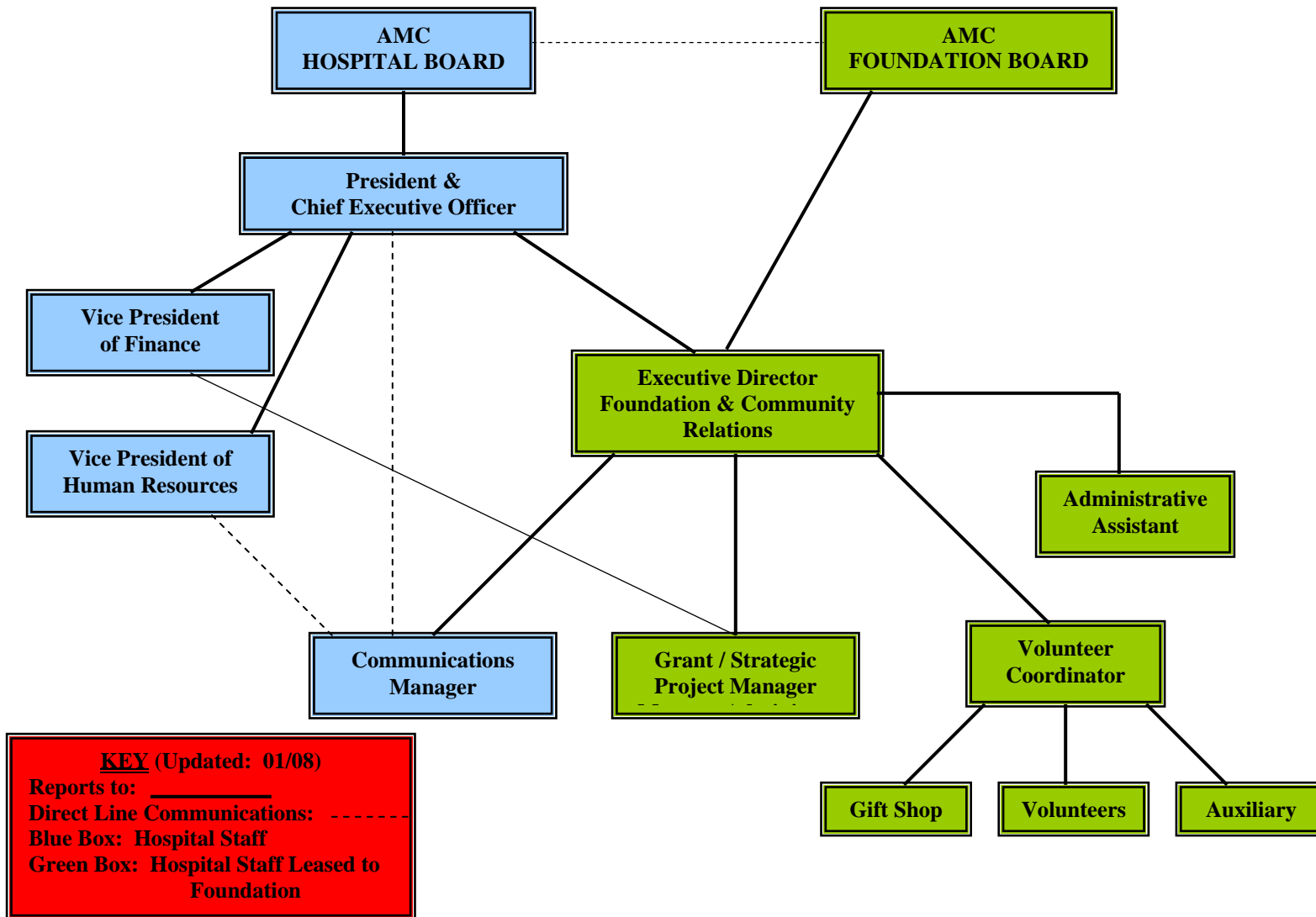
<http://www.ahp.org/Resource/Pages/default.aspx>

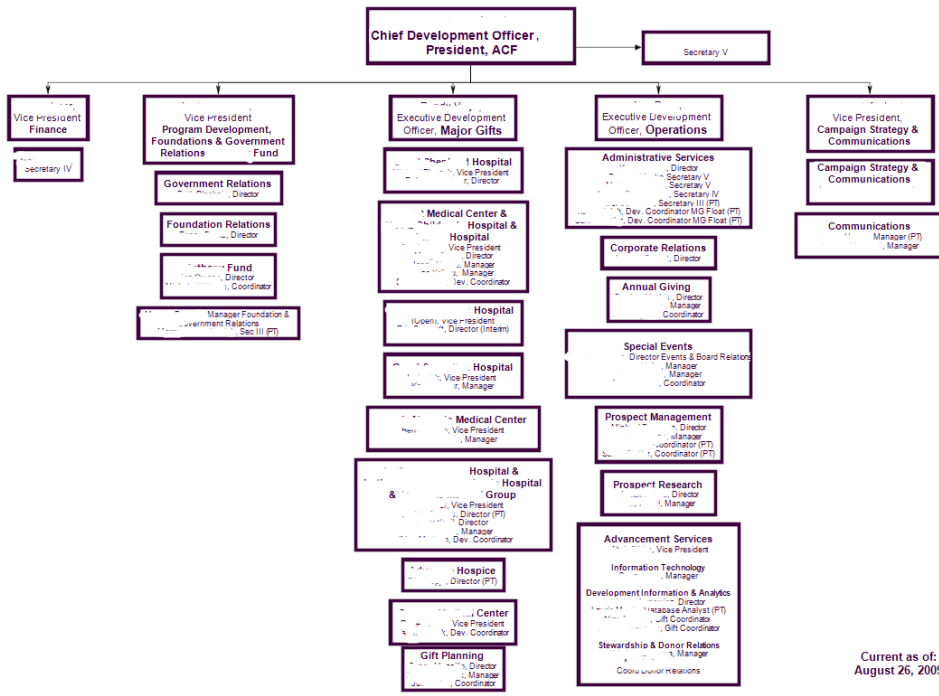
Organization Chart Samples for Healthcare Related Organizations

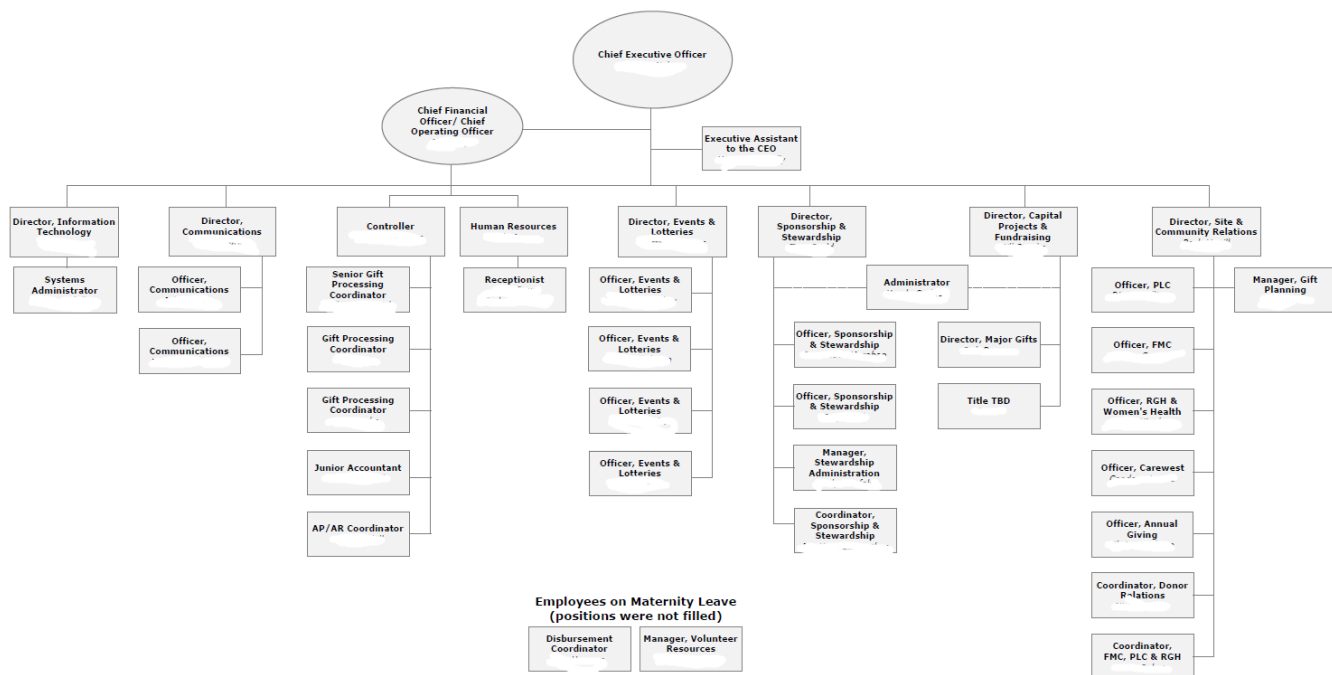


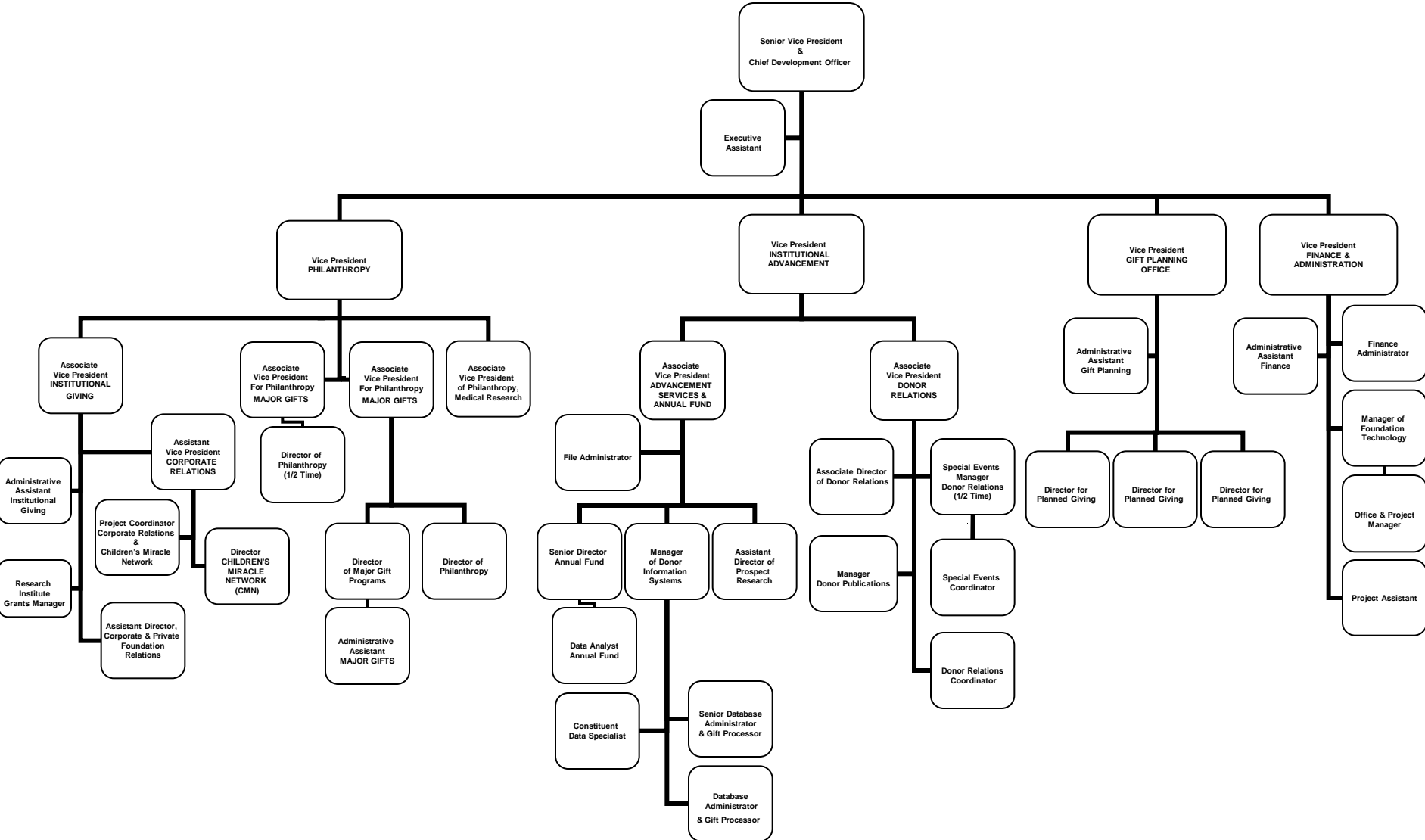
In addition to the printed charts, there was one response where there was no printed chart.

"Our Foundation is a separate supporting 501 (c) (3) (509 A) with its own board comprised of Medical Center staff and volunteers by designation, with the preponderance of board members representing the public. I am a voting member, as is our CEO, CFO and an employee support committee representative. The Med Staff, Auxiliary and Board of Trustees each have one voting seat. The rest, up to a total of 19 persons, are from the public at large, recruited by this board as needed."

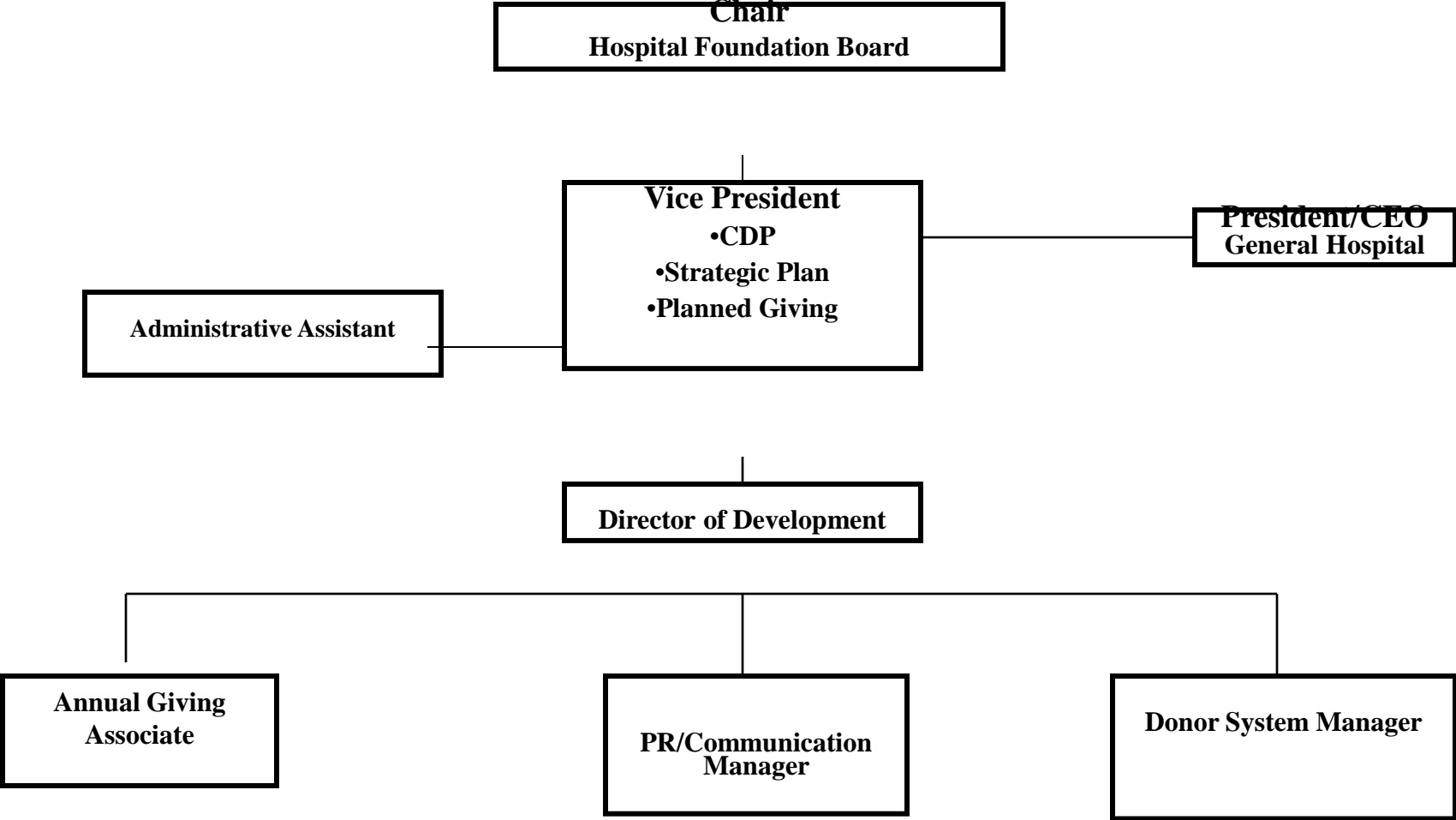


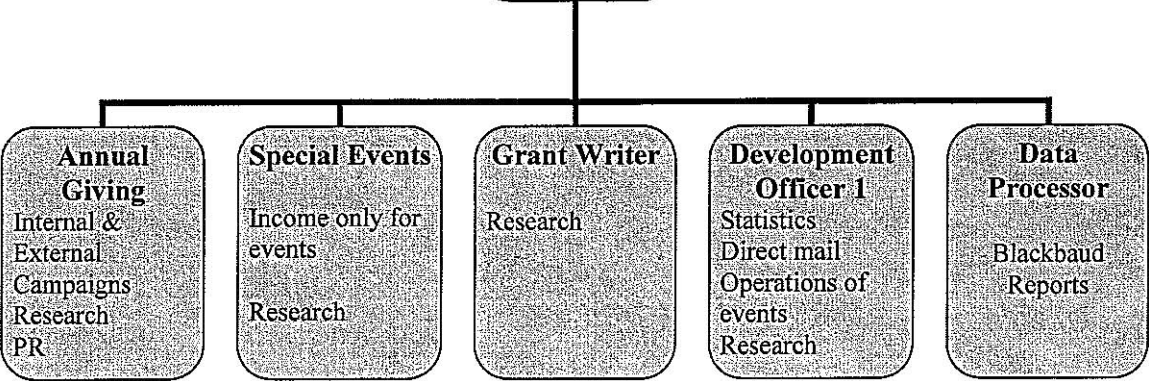
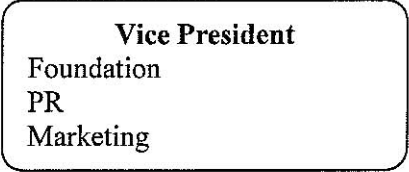


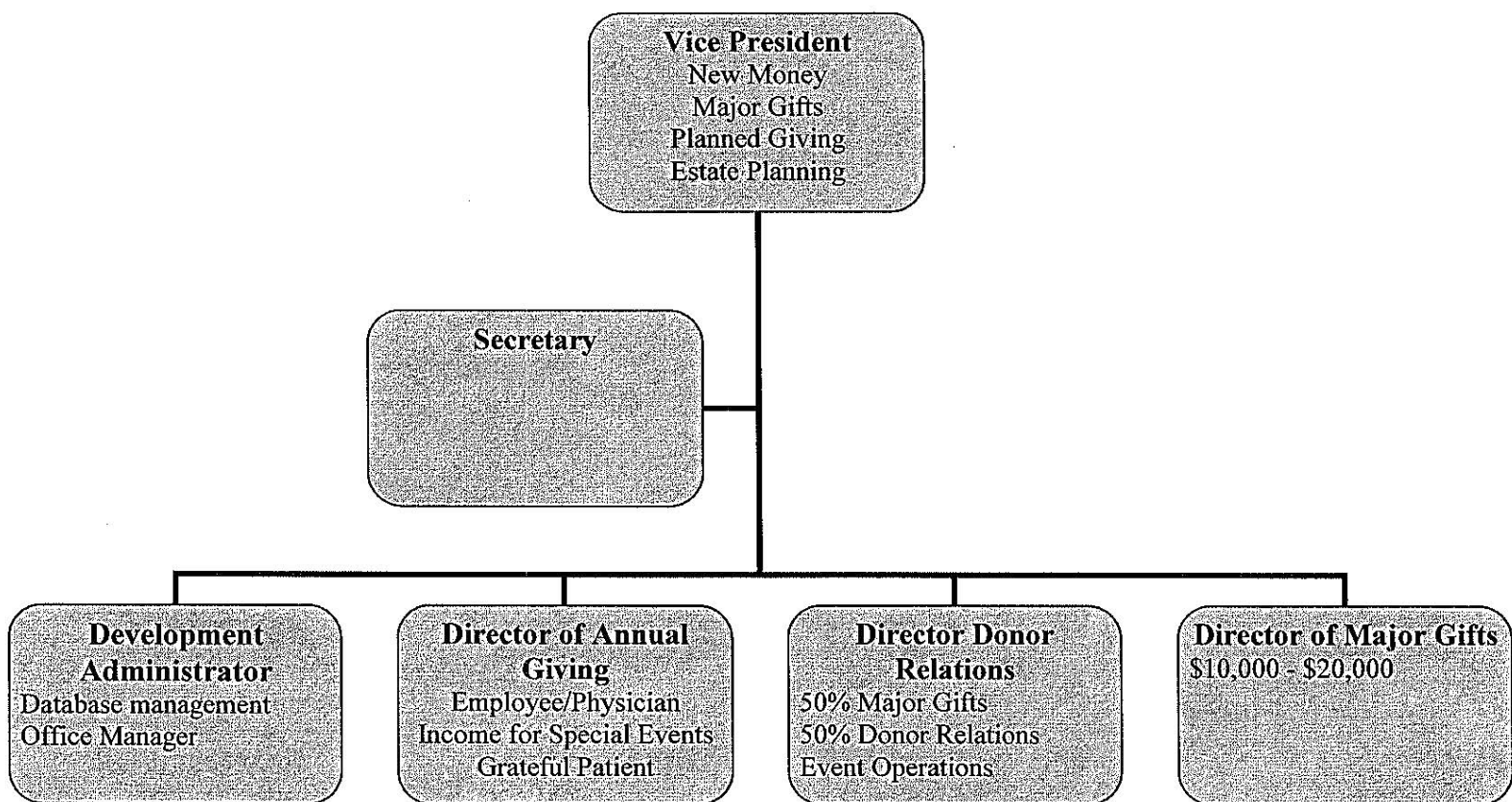


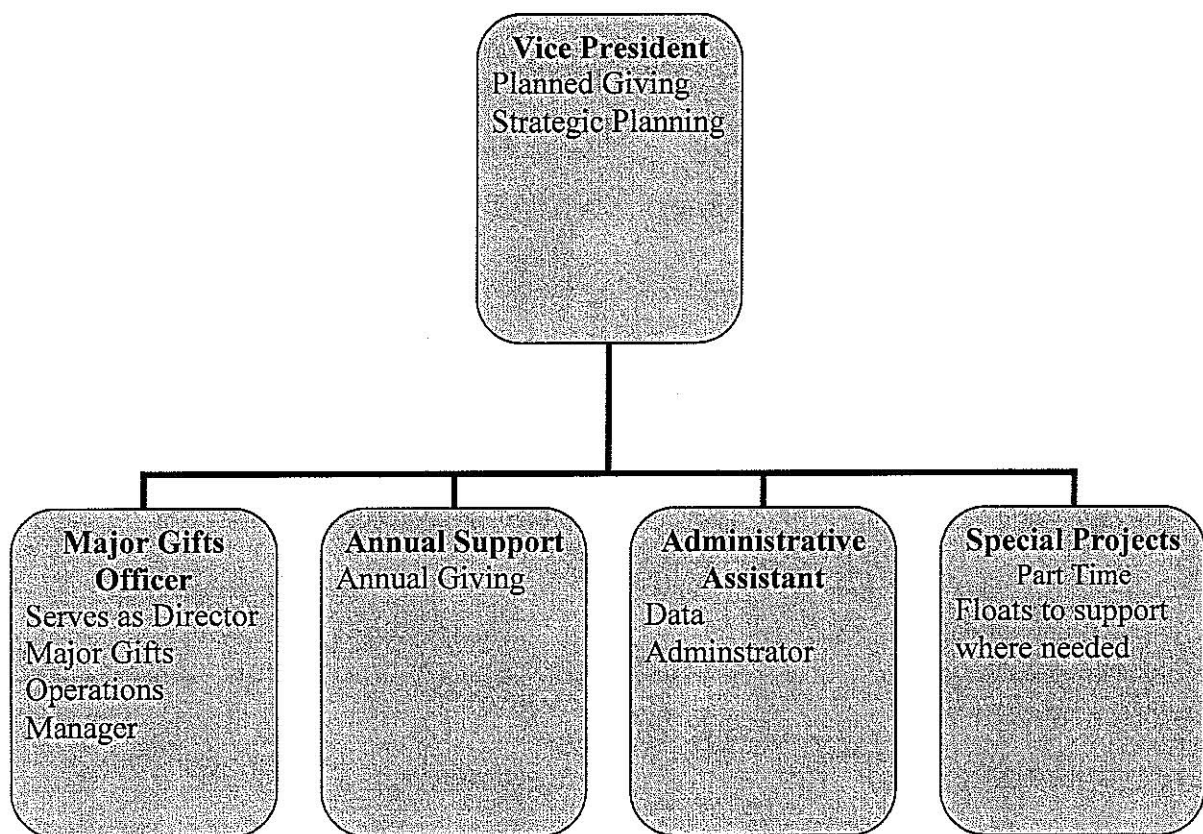


Organizational Chart

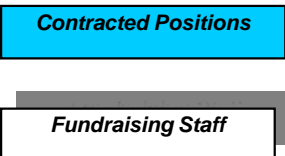


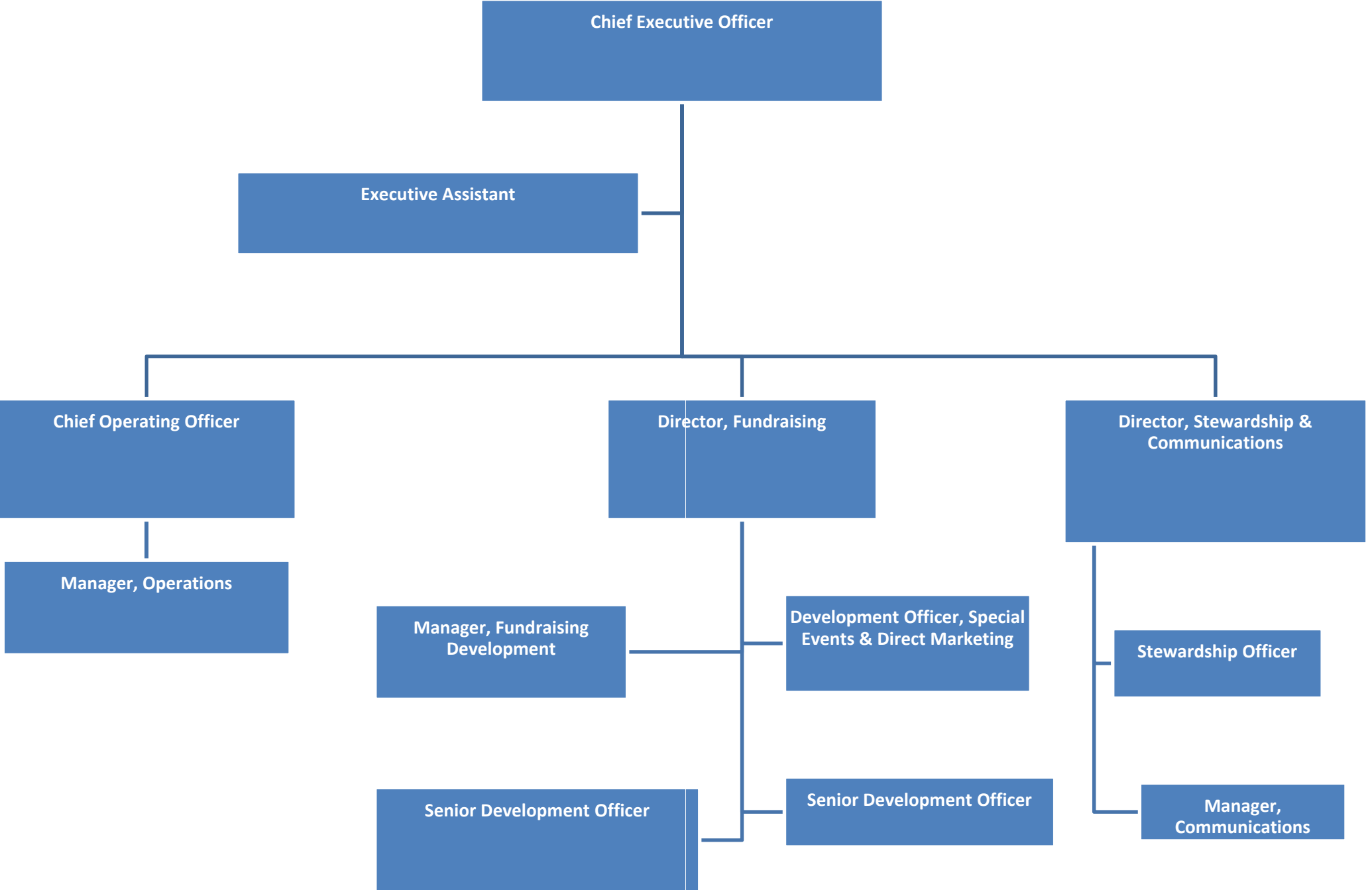


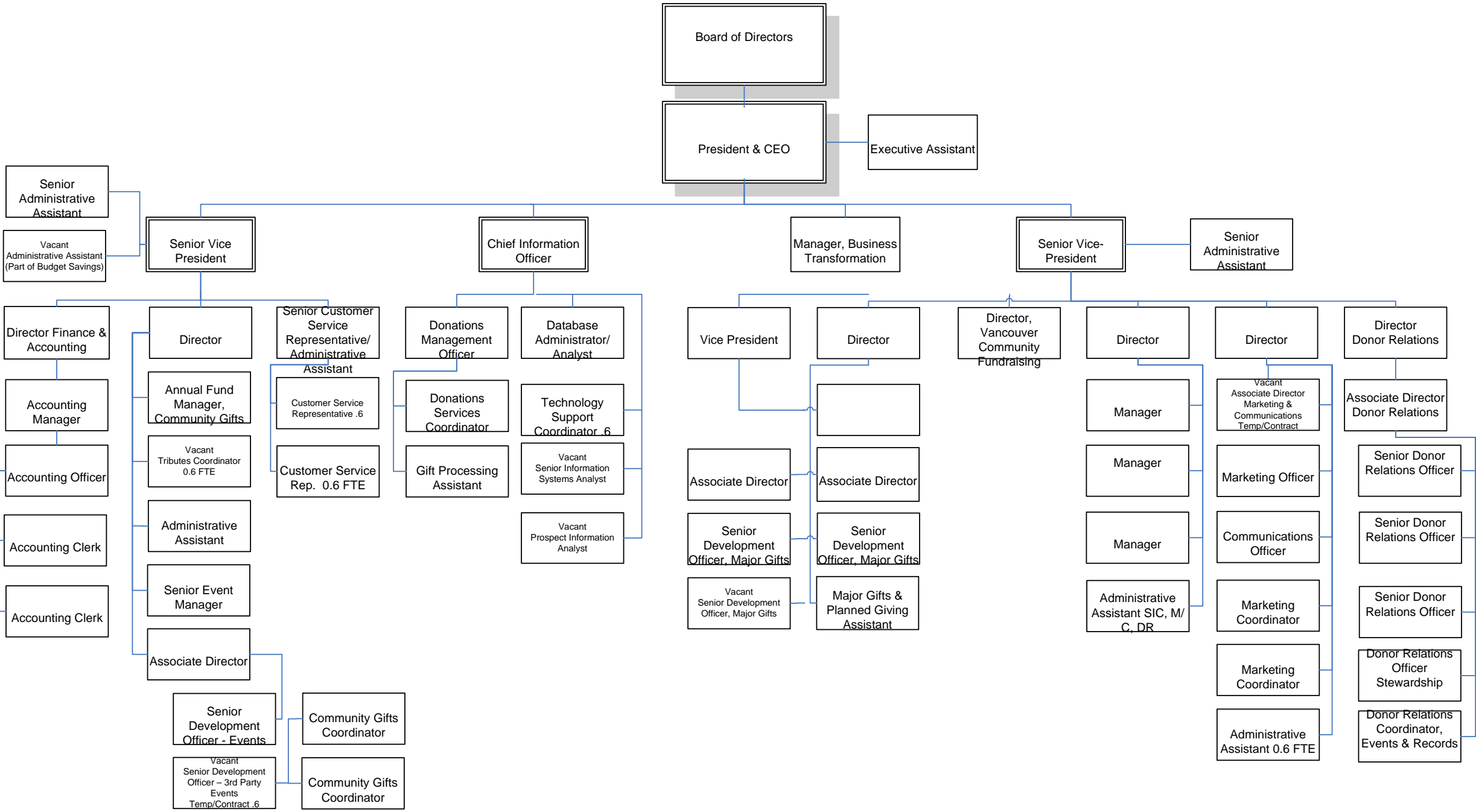




Effective April 13, 2009



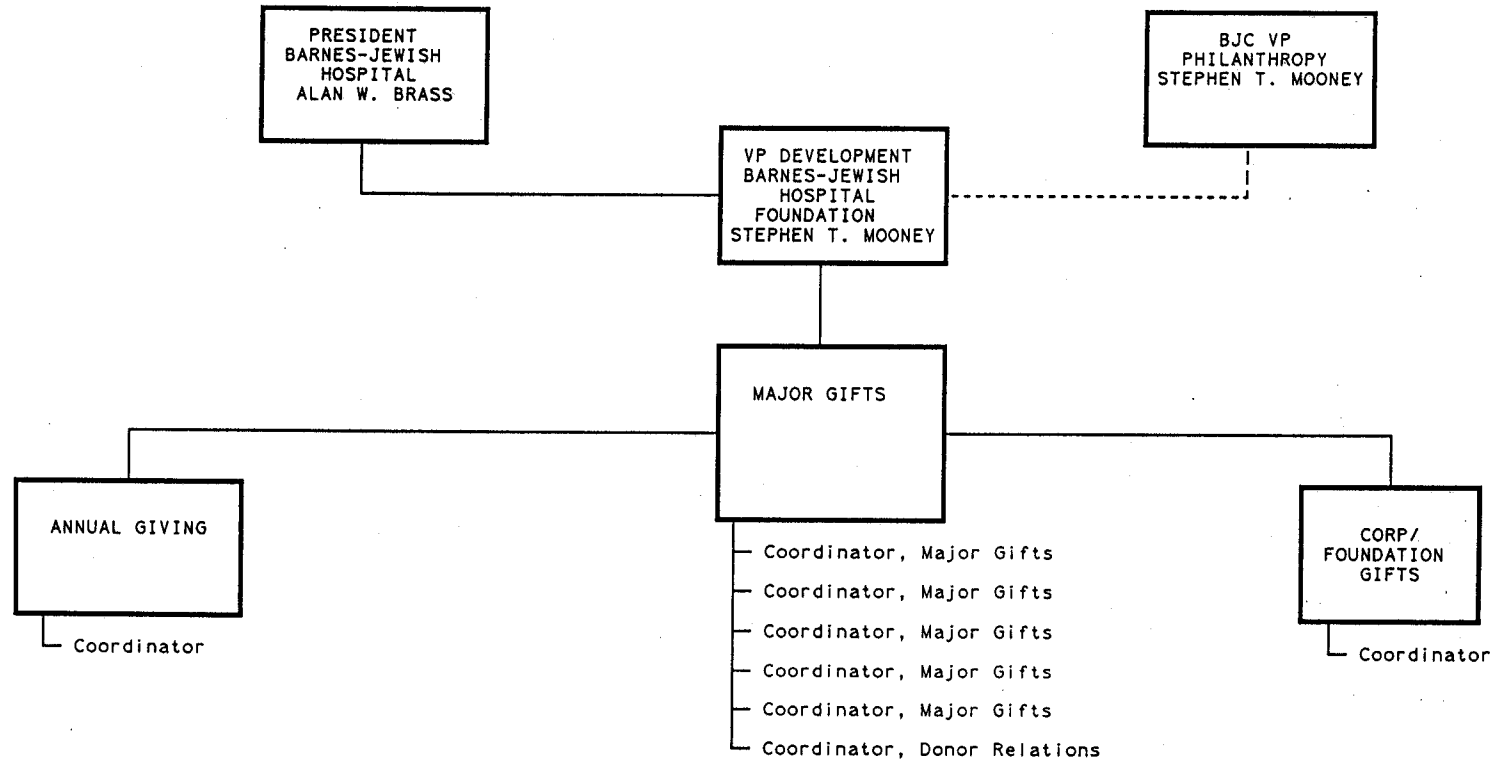




Sample Organizational Structures

*of institutions that are part of a Health System
as well as System structures*

BARNES-JEWISH HOSPITAL FOUNDATION ORGANIZATIONAL CHART



CLERICAL

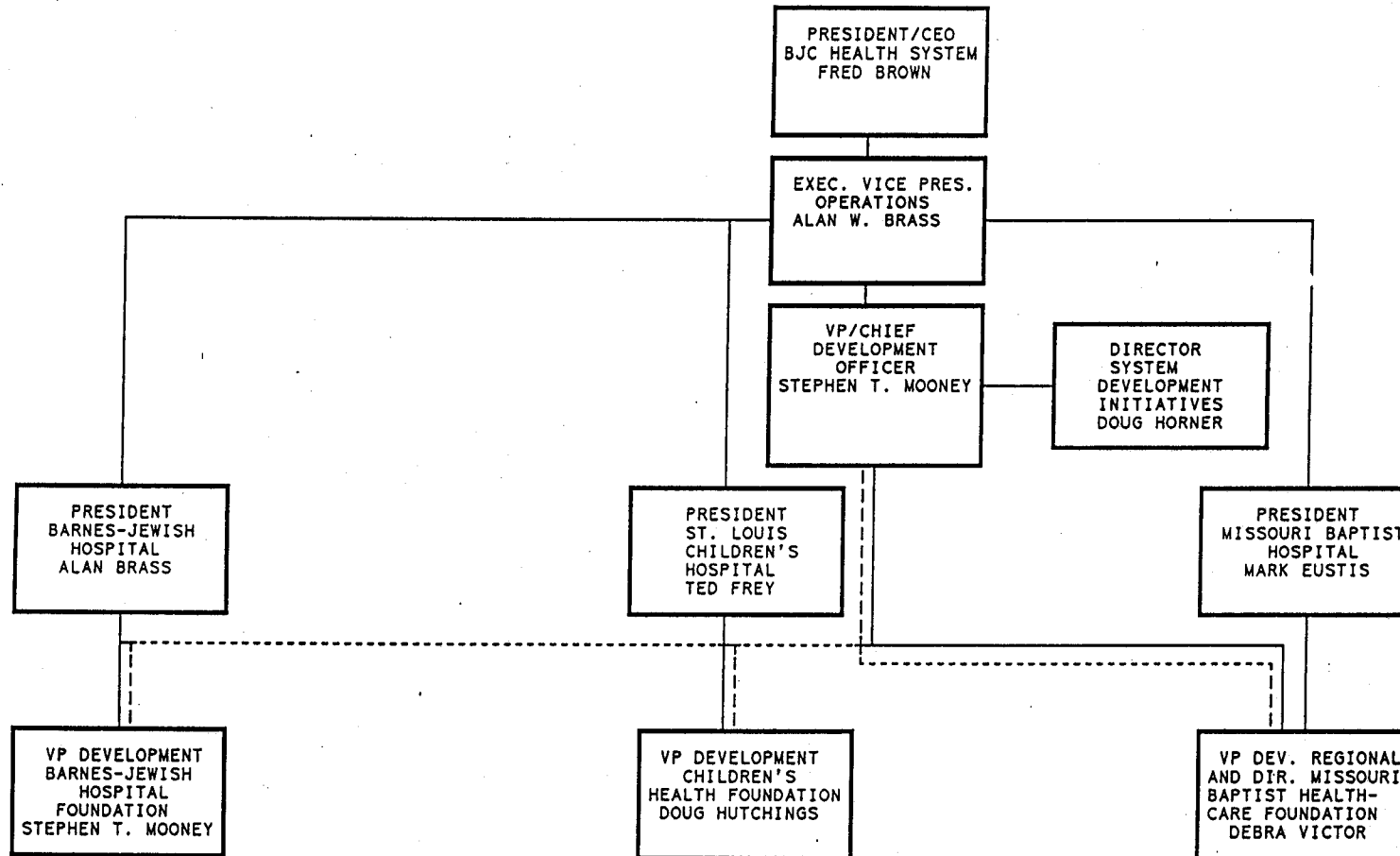
Executive Secretary

Secretary

Clerk

Clerk

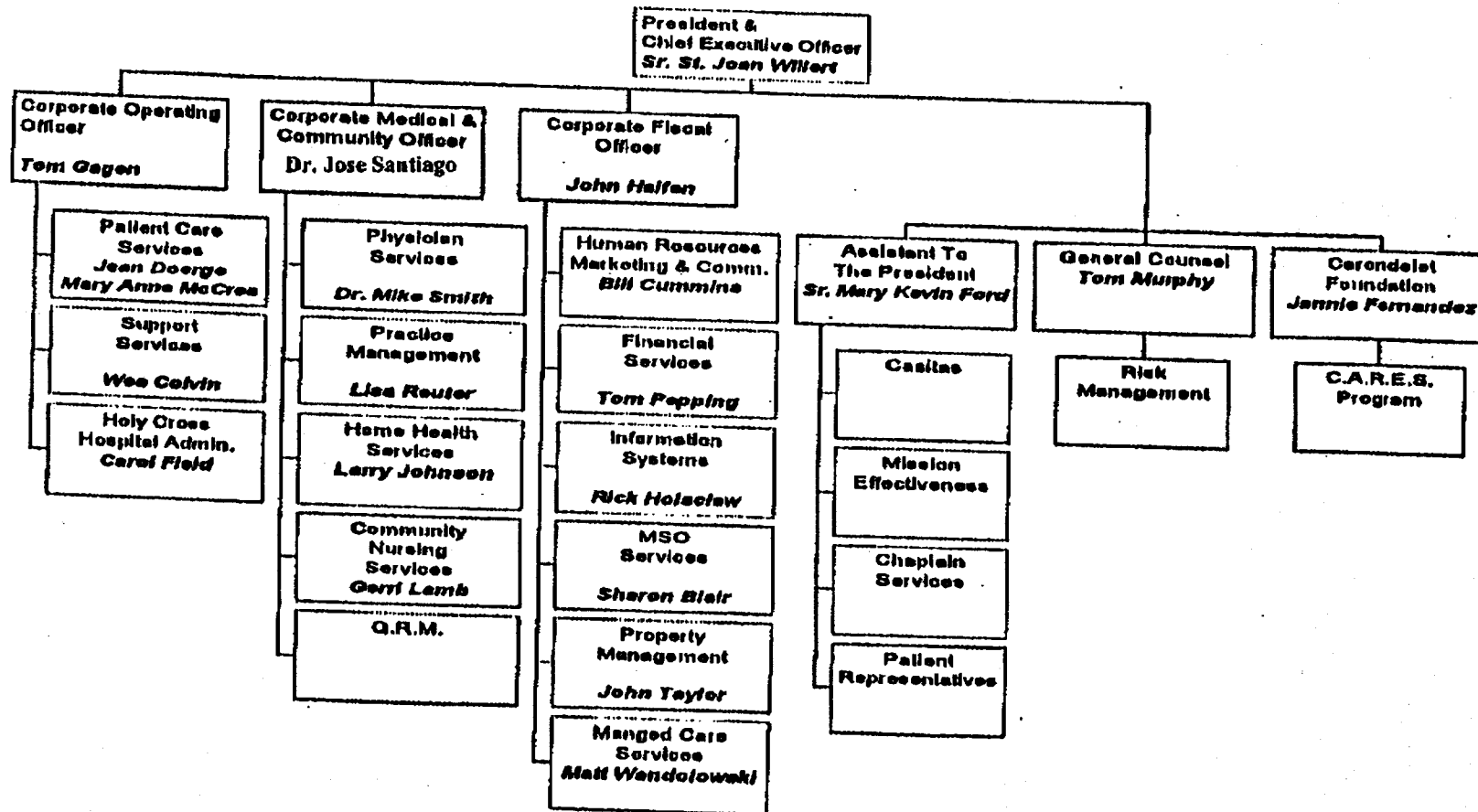
BJC PHILANTHROPY SYSTEM ORGANIZATIONAL CHART



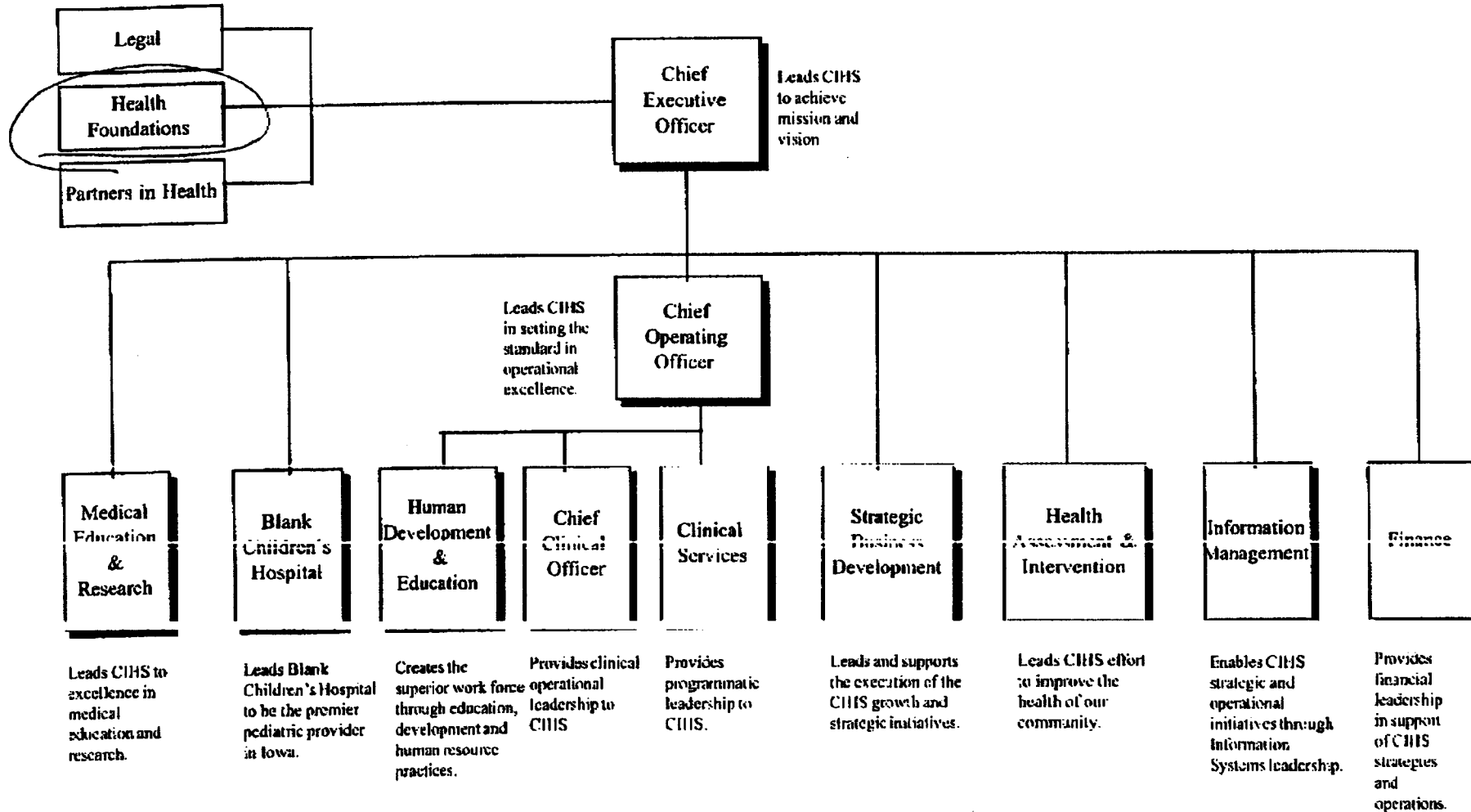
Carondelet Health Network

Key Administrative Functions

Organization Chart

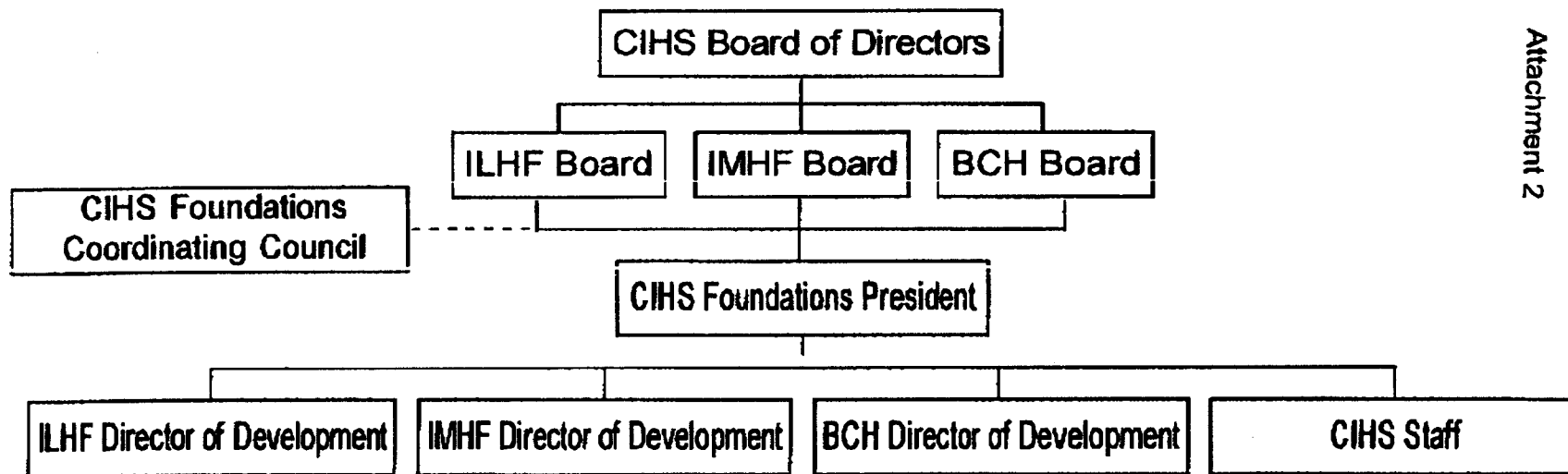


CIHS ORGANIZATIONAL STRUCTURE



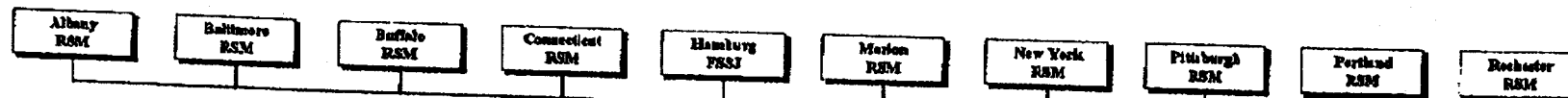
CIHS Foundations Organization Chart

Attachment 2



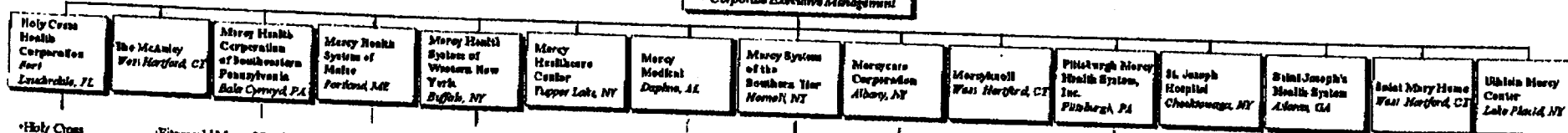
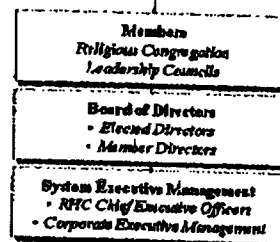


Eastern Mercy Health System



Eastern Mercy Health System Organization Structure

- 10 Sponsoring Religious Congregations - Includes congregations of the Institute of the Sisters of Mercy of the Americas (RSM) and the Franciscan Sisters of St. Joseph, Hamburg, NY (PSSJ)
- System Governance and Management
- 15 Regional Health Corporations (RHCs) and their health care delivery Component Corporations (CCs) and subsidiaries



• Holy Cross Hospital
Fort Lauderdale
• Holy Cross Medical Group
Fort Lauderdale
• Nursing Network
Fort Lauderdale

• Fitzgerald Mercy Hospital
Dorby
• Mercy Health Plan
Philadelphia
— Keystone Mercy Health Plan
• Liberty Health System
Springfield
• Mercy Diversified Services
Dorby
— Mercy Adult Services
— MercyCare Health Services at
Fitzgerald Mercy
• Mercy Elderly Housing
Corporation
— Mercy Eastwick Corp.
— Mercy Management of
Southwestern Pennsylvania
Bala Cynwyd
• Mercy Haverford Hospital
Haverford
• Mercicordia Hospital
Philadelphia
• North Philadelphia Health
System
Philadelphia
— Grand Medical Center
— St. Joseph's Hospital

• Mercy Hospital
Portland
• The Recovery Center
Portland
• Mercy Primary Care
Center
Portland
• Visiting Nurse
Association &
Hospice
Portland

• Father Biker Manor
Orchard Park
• Juliana Apartments
Buffalo
• Kenmore Mercy Hospital
Kenmore
• McAuley Residence
Kenmore
• McAuley Senior Certified
Home Health Agency
Lockport
• Mercy Hospital
Buffalo
• Mercy Home Care of
Western New York
Cheektowake
• Mercy Medical Equipment
and Oxygen Company
West Seneca
• St. James Hospital
Batavia
• Trocena Place
Batavia

• The Bunches
Fairhope
• McAuley Place
Mobile
• Mercy Medical
Hospice
Mobile
• PHCS-LLC
(durable medical
equipment)
Mobile
• Portia Place
Mobile

• St. James Mercy
Hospital
Hornell
• SIM Properties,
Inc.
Hornell

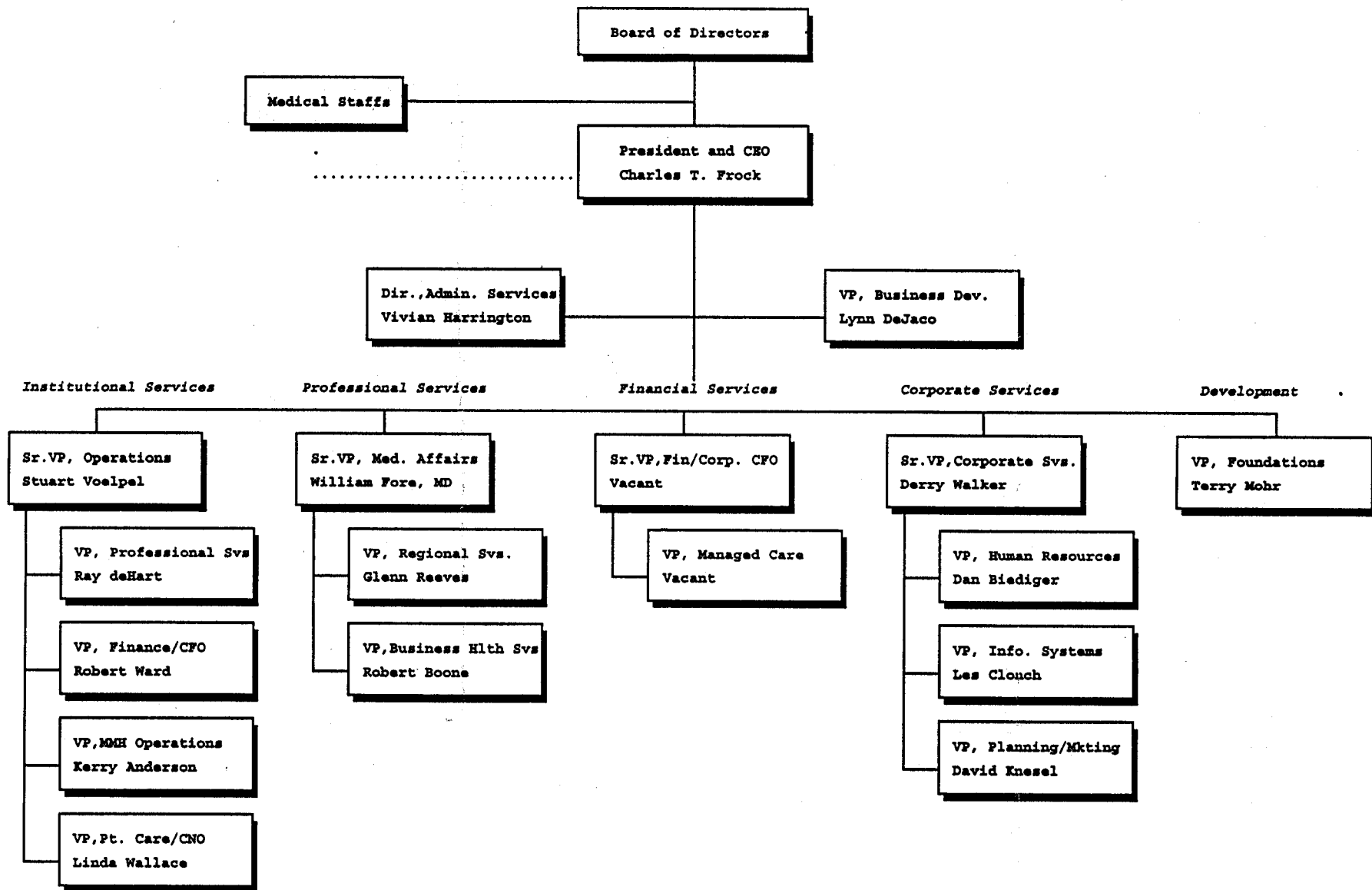
• McAuley Residence
Albany
• Mercy Cares for Kids
Albany
• Our Lady of Mercy
Life Center
Guilderland
• St. Peter's Addiction
Recovery Center
(SPARC)
Guilderland
• St. Peter's Hospital
Albany

• Mercy Life Center
Corporation
Pittsburgh
— St. Joseph's Nursing
and Health
Care Center
— St. Pius X Residence
• Mercy Providence
Hospital
Pittsburgh
• The Mercy Hospital of
Pittsburgh
• Northern Southwest
Communications MVMR
Pittsburgh
• Southwest Nursing Home
and Rehabilitation
Center
Pittsburgh

• Saint Joseph's Hospital of Atlanta
Atlanta
• Saint Joseph's Mercy Care
Services
Atlanta
— Mercy Mobile Health Care
Services
— Mercy Senior Care

(1) management contract
(2) joint venture

FirstHealth of the Carolinas



All Hospital Departments
Transport/EMS
Hospice

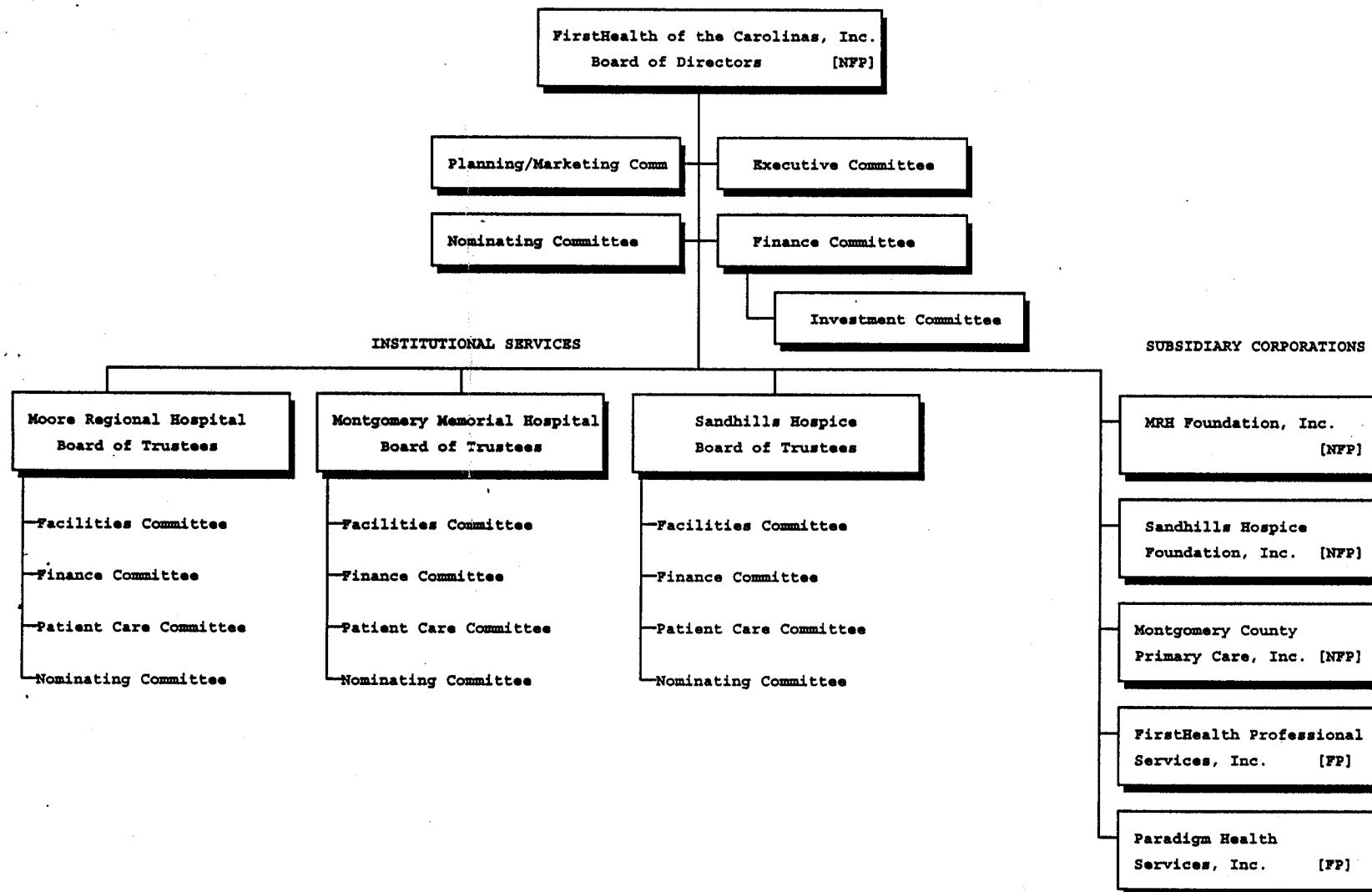
FirstHealth Professional Svs.
Health & Fitness
Occupational Health/Rehab
Quality Management

Corporate Accounting
Managed Care
Treasury & Investments
Health Plan

Education
Guest Services
PR/Planning/Marketing
Technology Management

MRH Foundation
Hospice Foundation
Community Development
Community Health

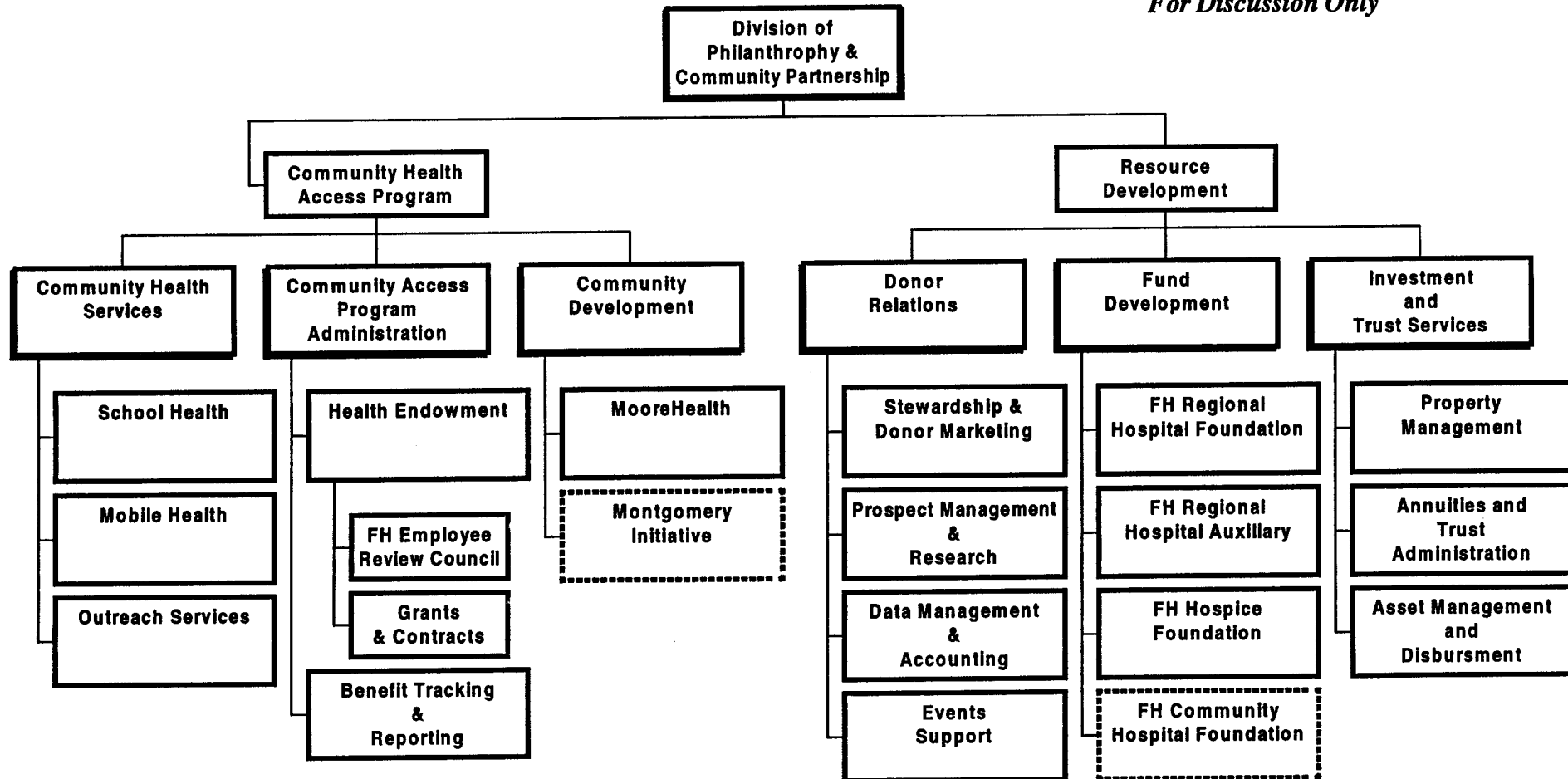
Mr. Terry W. Mohr
 VP, Foundations
 Moore Regional Hospital Foundation
 P.O. Box 3000
 Pinehurst, NC 28374



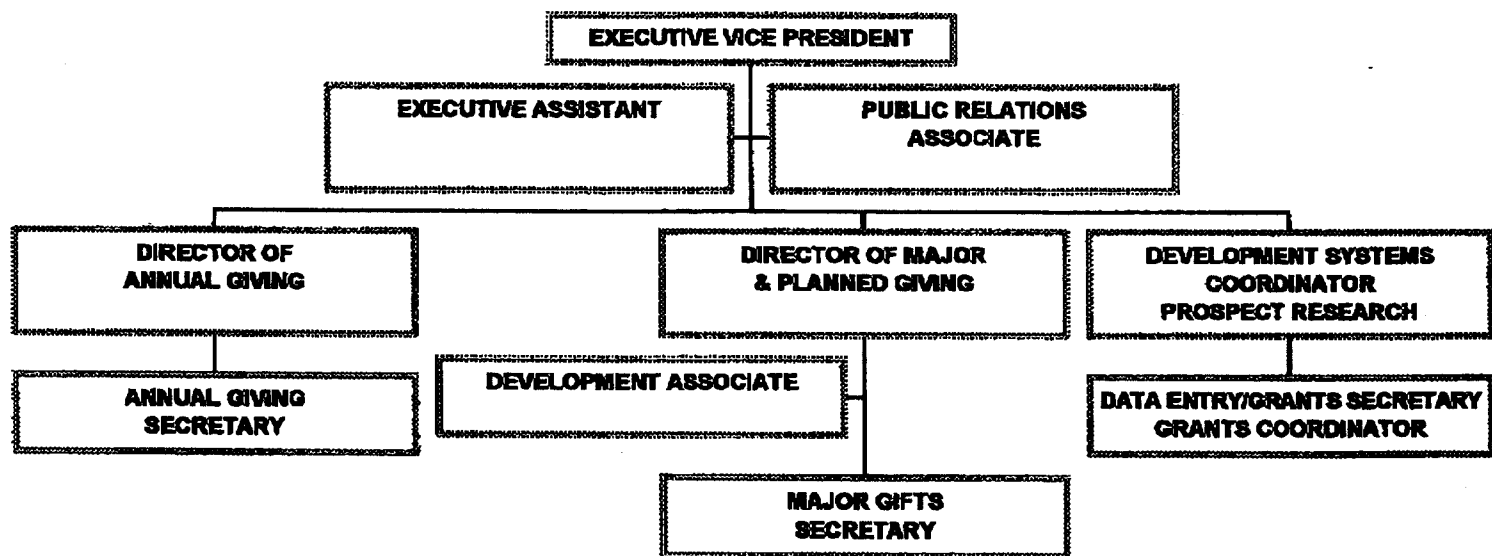
NFP = Not For Profit
 FP = For Profit

FIRSTHEALTH OF THE CAROLINAS

*Confidential Draft
For Discussion Only*

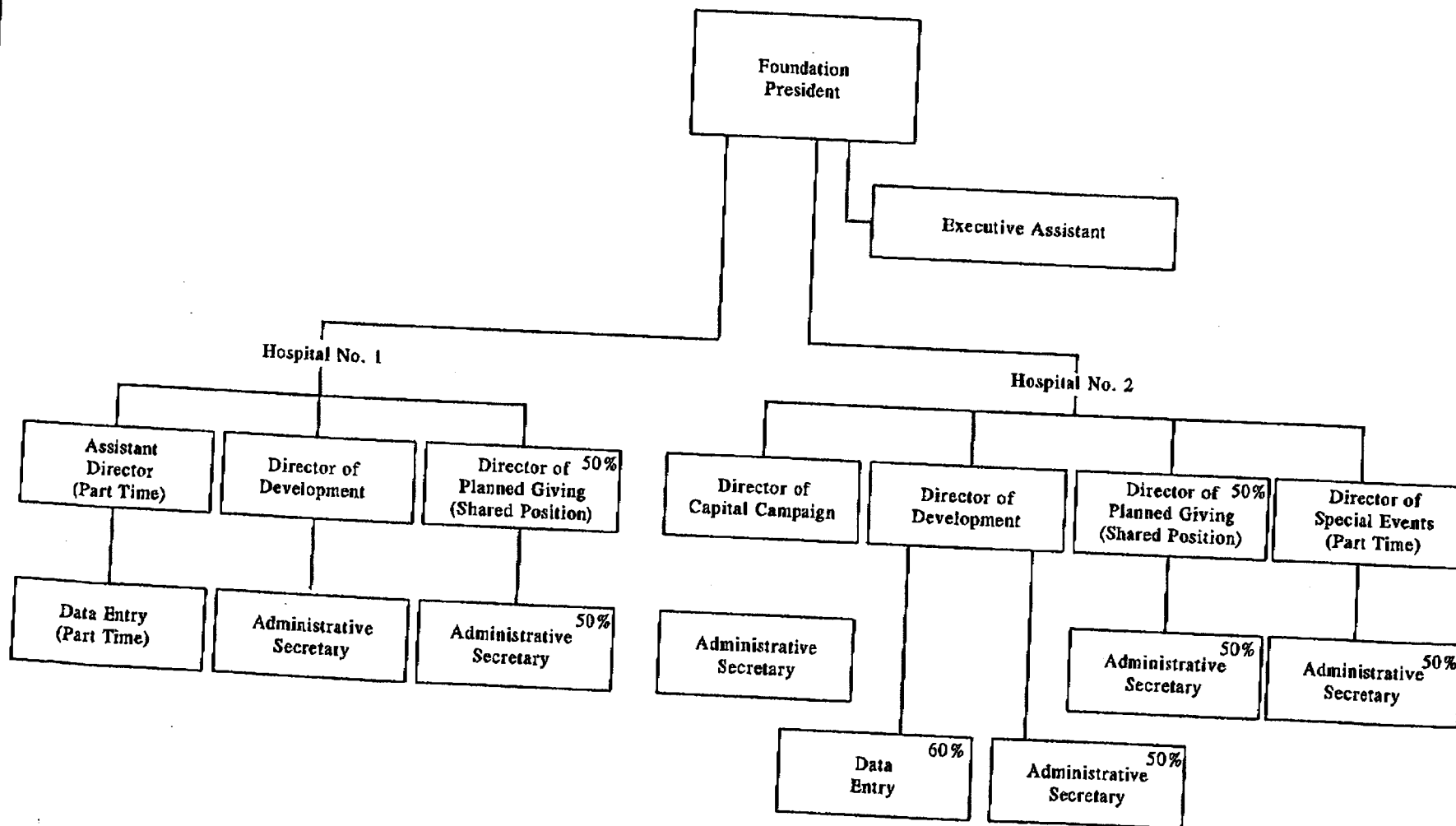


HEALTHEAST FOUNDATION STAFFING STRUCTURE



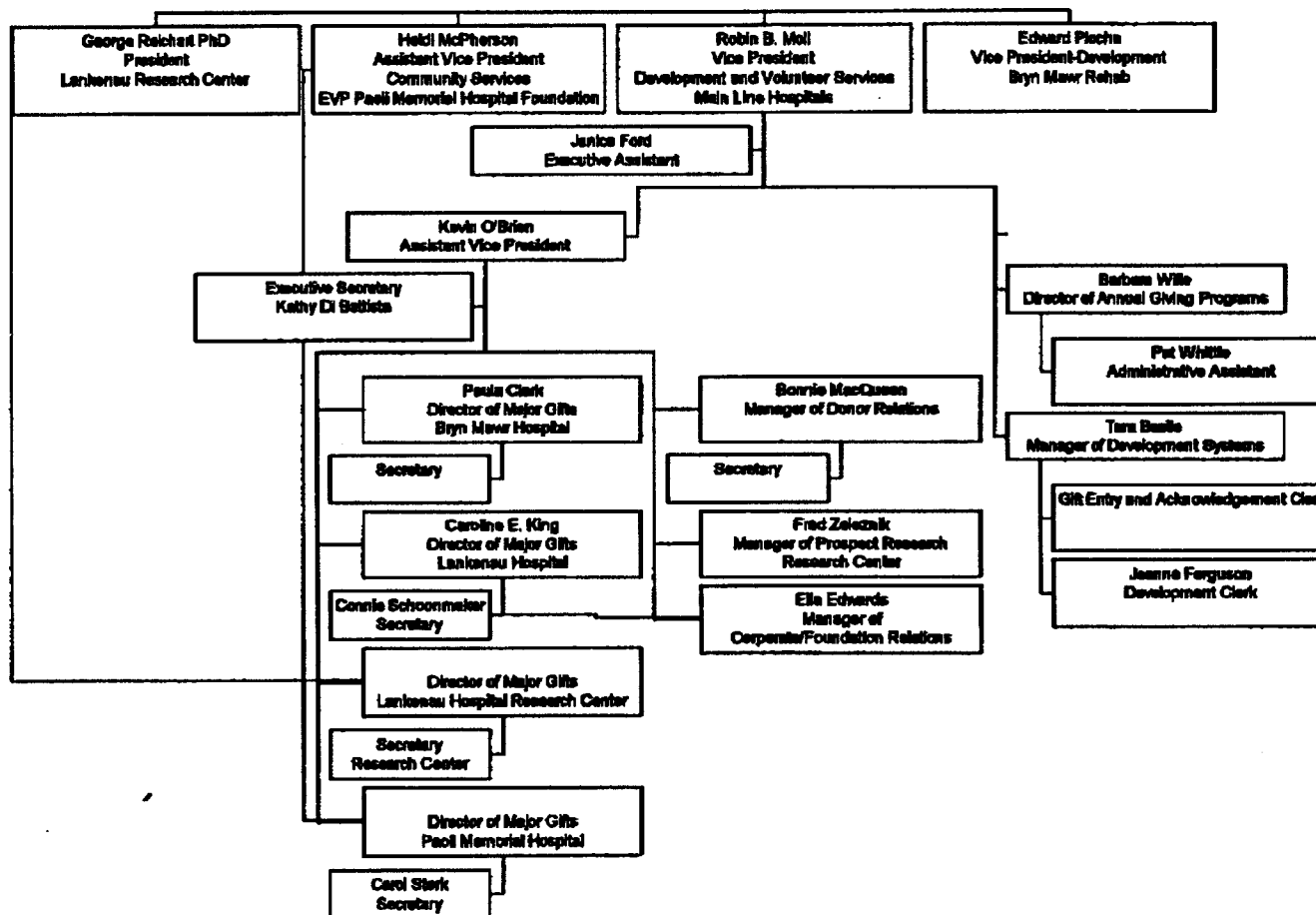
Mr. Ronald D. Guziak, FAHP
President
Little Company of Mary Hospital Fdn.
4101 Torrance Blvd.
Torrance, CA 90503

LCMHS Foundation Organization



Main Line Health
Jefferson Health System
Development Staff

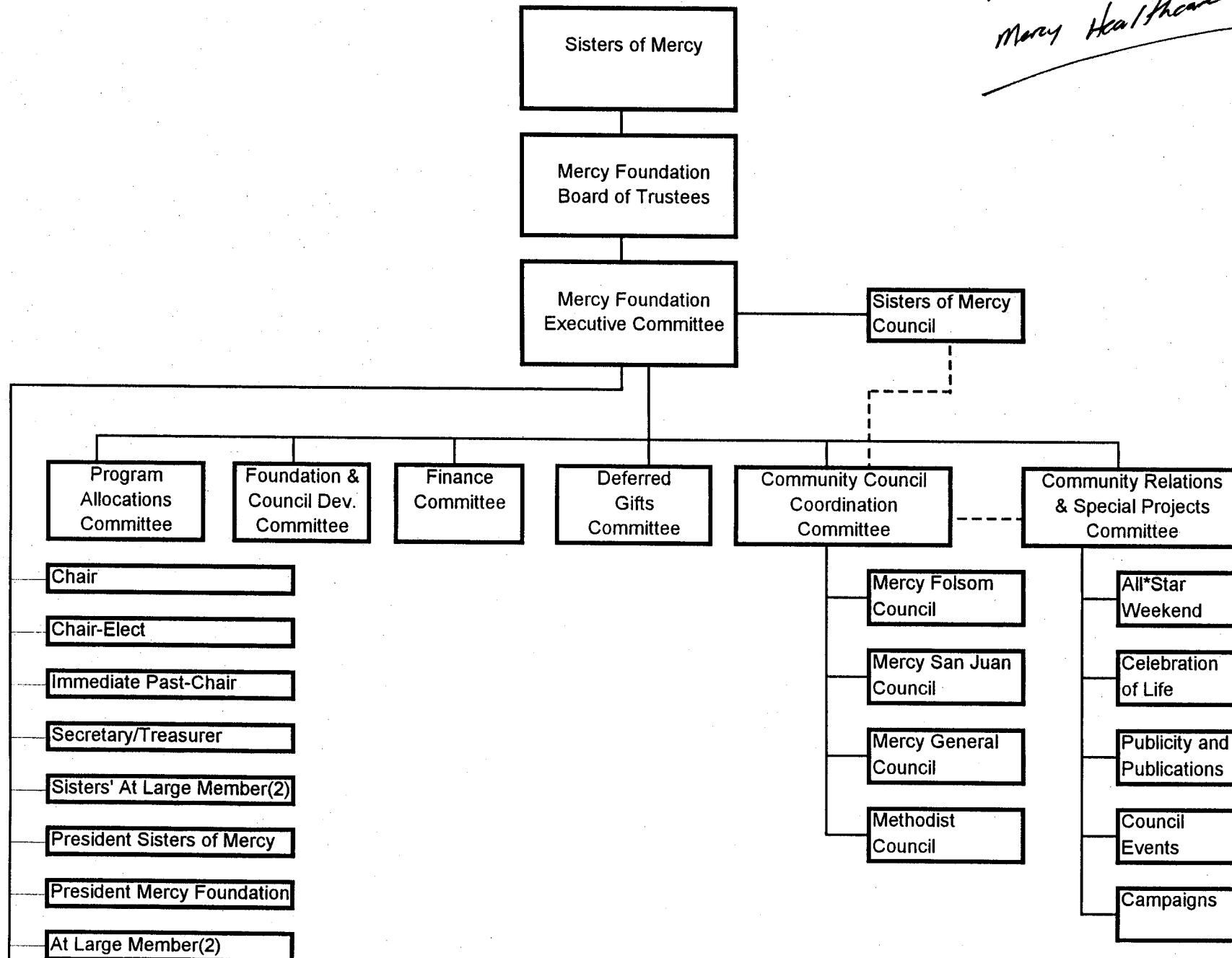
TOTAL P.04



February 1997

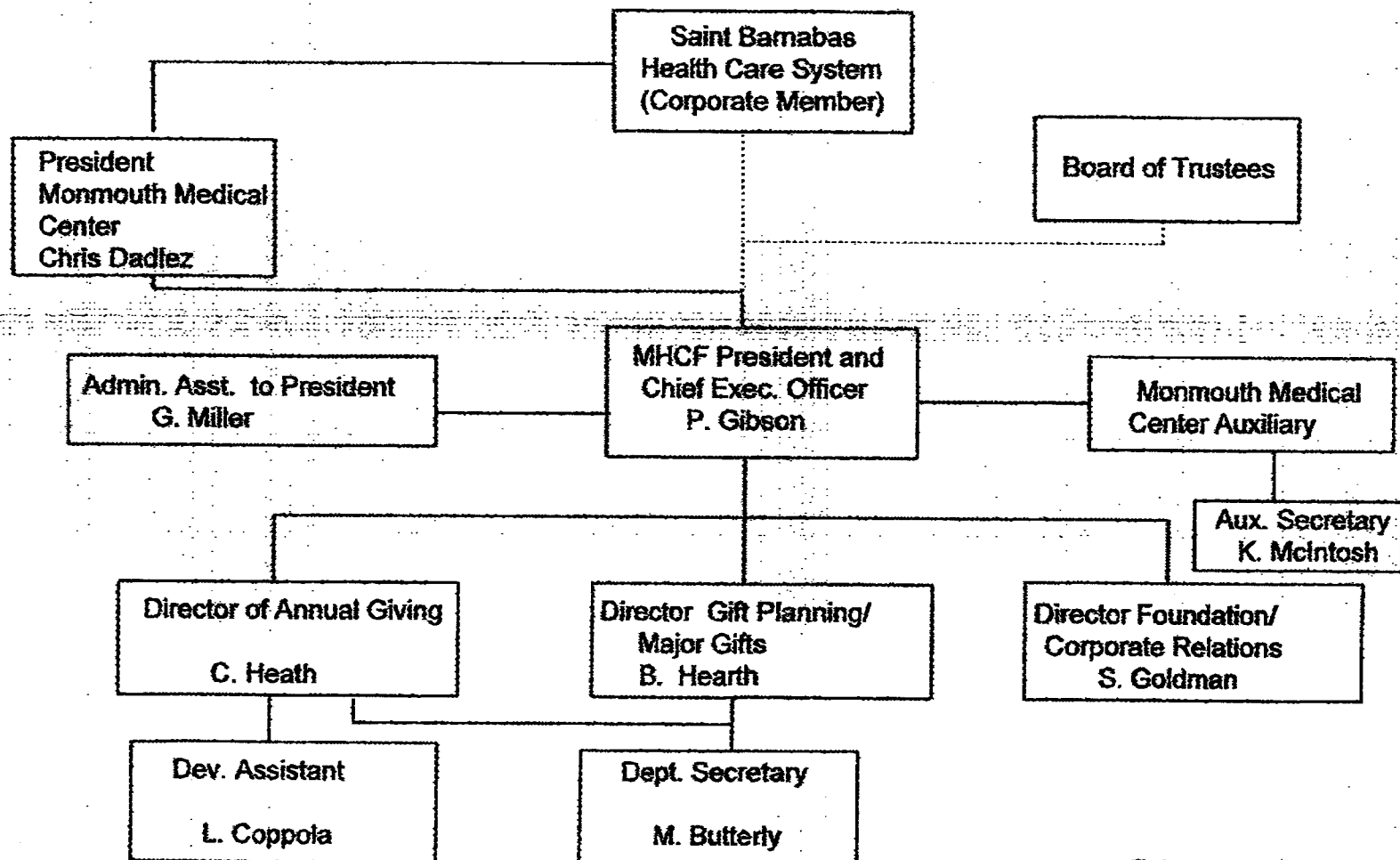
Modified Foundation Structure: January 1997

*Mercy Foundation
Mercy Healthcare Sacramento*



MONMOUTH HEALTH CARE FOUNDATION

TABLE OF ORGANIZATION



February 1997

DEPARTMENT OF DEVELOPMENT ORGANIZATIONAL CHART

January, 1997

Vice-President for Development
(Stan Brown)
Supervises the directors of Communications, National Fund, Gift Planning, Development Services, and Regional Directors of Development. Oversees all NBA fund-raising programs and informational activities in coordination with Church policies.

Executive Secretary
(Darlene Flinn)
Provides secretarial support for the Vice President; responsible for planning and coordination of special meetings relating to Development

Regional Director of Development
(Don Brewer)
Supervises development programs of CSI, Cleveland, Colorado, St. Louis, and SCSCY/MS

Regional Director of Development
(Kirby Gould)
Supervises development programs of Kansas, Oklahoma, Ramsey, and Gateways

Regional Director of Development
(Mike Jacobs)
Supervises the development programs of Cypress Vlg, FCC, Lenoir, Skyline, and Woodhaven

Regional Director of Development
(Dick Skooglund)
Supervises the development programs of Flinn, Foxwood Springs, California, Kennedy, Robin Run, and BW Stone

Director of Development
(Dick Savage)
Responsible for securing new financial support for NBA from prospects capable of making major gifts. Prospects will include individuals, corporations or foundations.

Director of Gift Planning
(Ed Allen)
Responsible for all aspects of the gift planning program; provides planned giving services to NBA units, staff, and boards.

Director of Development Services
(Rebecca Zimmer)
Provides deferred giving support services for NBA staff and constituents; provides dev. resources to NBA units in the areas of dev. database management

Secretary to the Director of Gift Planning and the Director of Development Services
(Kate Jackson)
Provides clerical and general secretarial support for Gift Planning and Development Services. Serves as contact person for all questions concerning the development computer programs and donor info.

Director of Dev. for the National Fund
(Don Hiscox)
Responsible for the solicitation of gifts to the NBA Natl. Fund and NBA involvement with the Christian Church (Disciples of Christ); coordinates capital campaign requests to the NBA Board

Development Director for the National Fund
(Ralph Smith)
Responsible for solicitation of gifts for the NBA National Fund, primarily in the eastern United States

National Fund Secretary
(Beth Zeitler)
Provides clerical and organizational support for fund raising activities for the NBA National Fund

Development Secretary
(Joyce Adams)
Performs clerical and general secretarial duties for the NBA National Fund

Director of Communication Services
(Bill Mauk)
Responsible for public relations & media mgmt. for the NBA, offering consultation and direction to Exec. staff, dev. staff, and NBA units. Primary responsibility for public info. and public relations print materials, special reports & written communications.

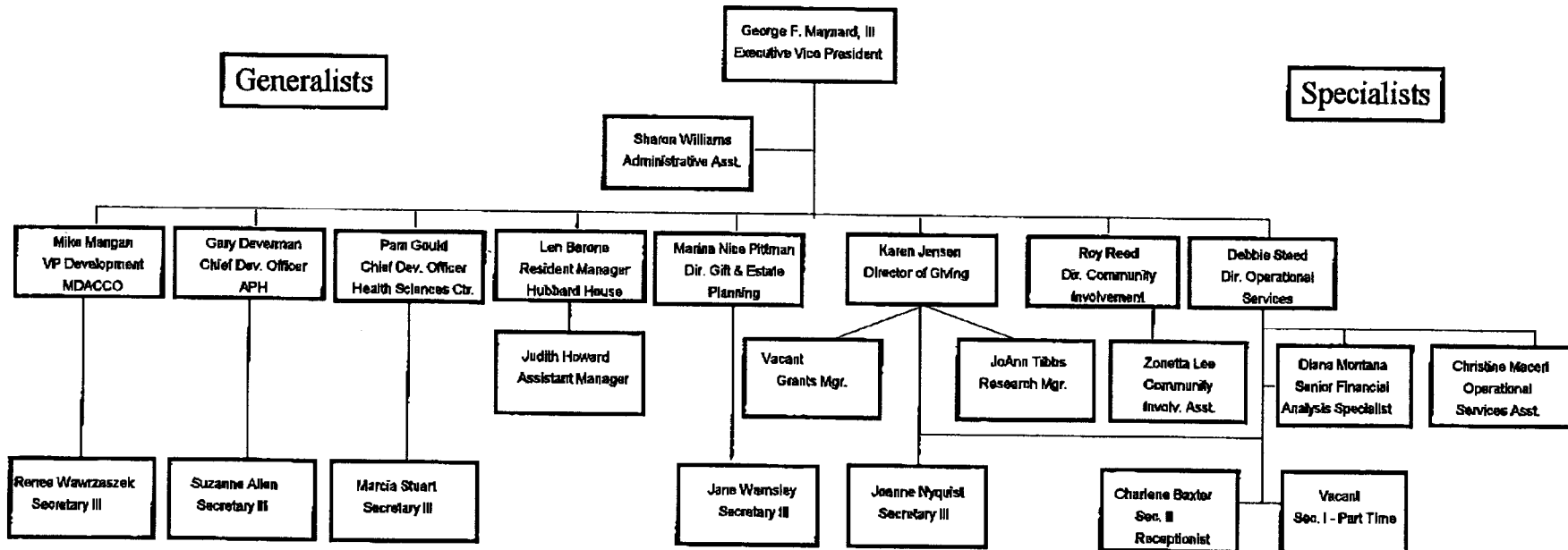
Director of Public Relations
(Katie Burckhalter)
Responsible for public relations and media mgmt. for NBA, offering consultation and direction to Exec. staff, dev. staff, and units; responsible for public info & public relations print materials, special reports, written communications; Editor of Family Talk.

Communications Specialist
(Sam Abatgis)
Specializes in video and digital communications - directing, recording, and editing video productions, CD-Roms Web pages for the Internet, other digital graphics

Communications Specialist
(Mary Ruth Crawford)
Specializes in desktop publishing and written communications-prepares copy and layout for brochures, programs, business cards, printed materials; editor of NBA Bugle; provides secretarial and clerical support to Communications Svcs. and Public Relations

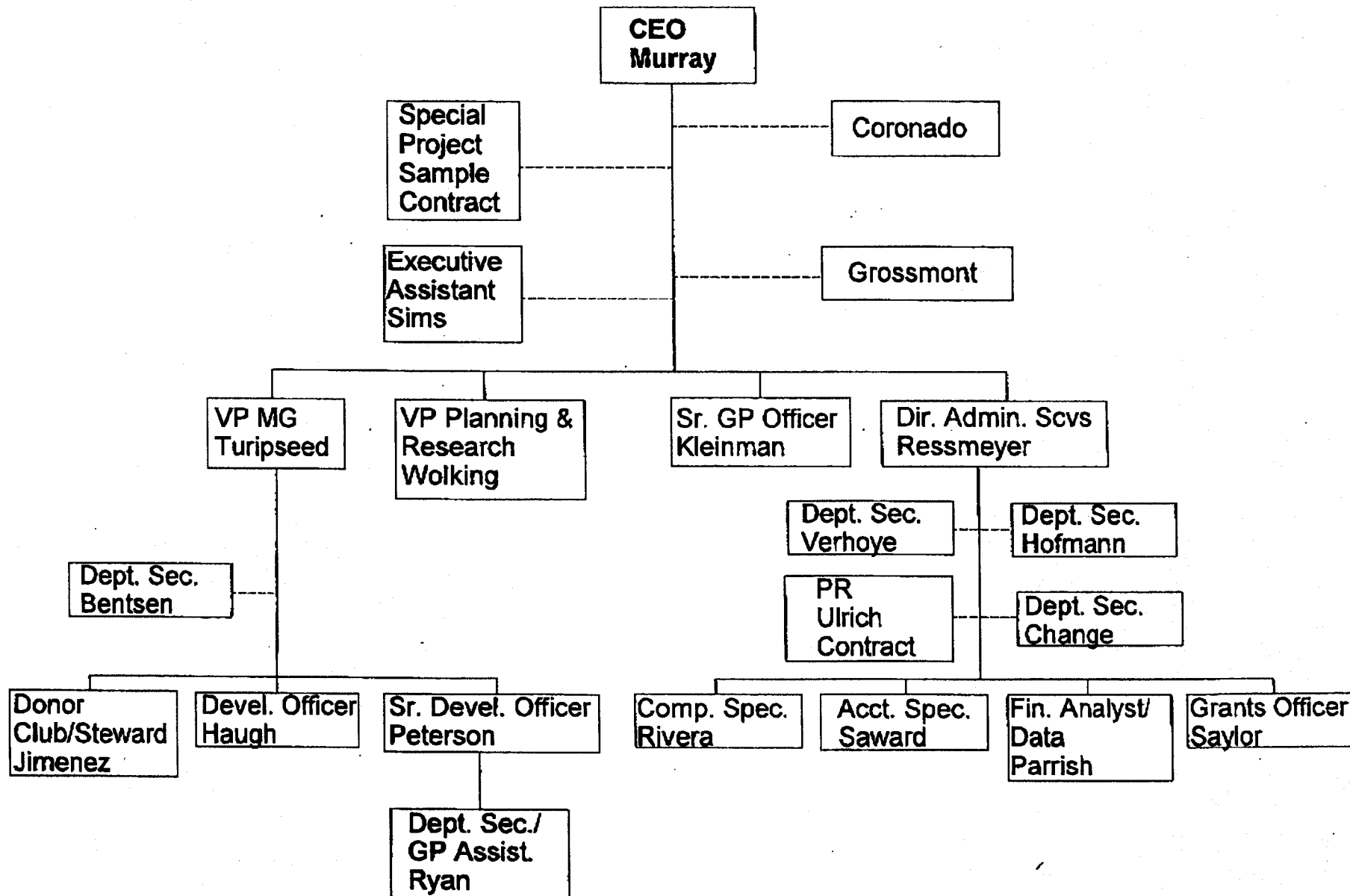
Mr. George F. Maynard, III, FAHP
 Executive Vice President
 Orlando Reg. Healthcare Fdn., Inc.
 1414 Kuhl Ave.
 Orlando, FL 32806-2093

ORLANDO REGIONAL HEALTHCARE FOUNDATION



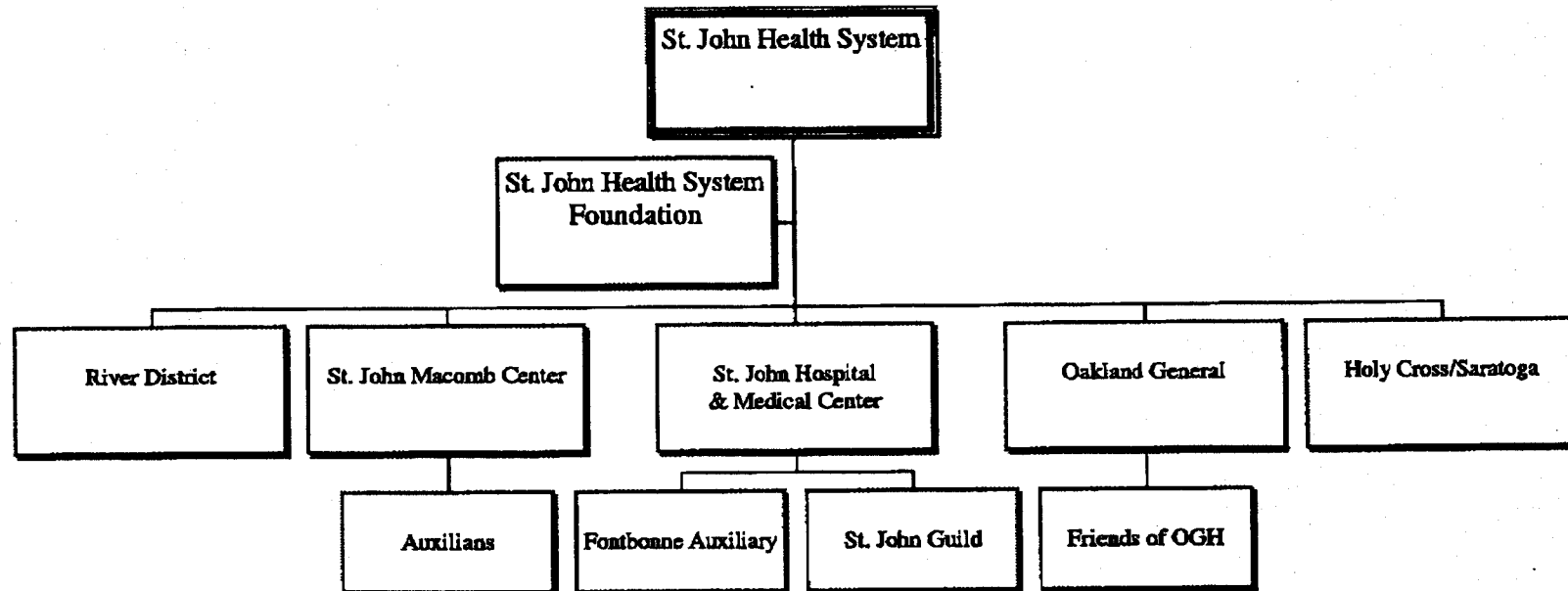
Sharp HealthCare Foundation

Ms. Colette M. Murray, CFRE
Chief Executive Officer
Sharp HealthCare Foundation
8525 Gibbs Drive, Suite 302
San Diego, CA 92123-1700





Mr. David L. Barcus
Vice President, Foundation
St. John Health System
22101 Moross Road, MOB #102
Grosse Pointe, MI 48236



Organizational Structure

2/11/97

FROM: ST JOHN FOUNDATION

313 343 7487

1997, 02-11

16:57

#986 P.03/04



St. John Health System Foundation

