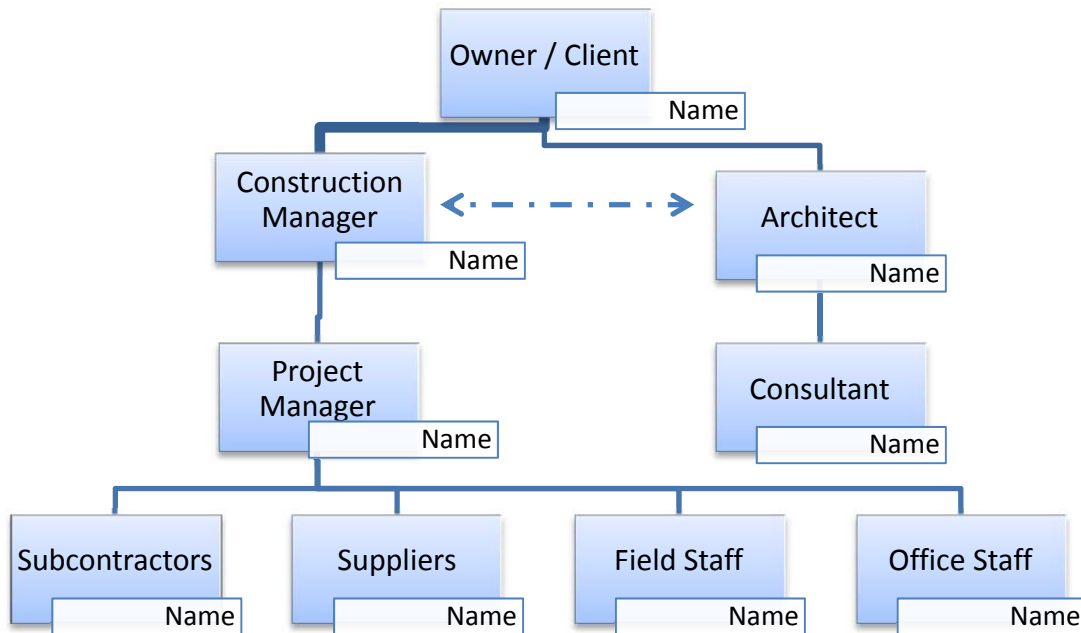


Sample Organizational Chart



In this simple chart, the relationship between the Construction Manager and the Owner/Client is obvious. No matter how large the project, there must be a *bona fide* relationship between the owner and the CM that shows that the construction manager was operating in the Owner's best interest.

In your organizational chart, you are required to list the titles and names of the individuals who worked with you on the projects(s) that you are submitting as qualifying for the 48 months Responsible in Charge requirement. The dotted horizontal line between the Architect and Construction Manager indicates consultative activities; however, since there is no formal relationship between the architect and the staff, contractors, and suppliers, the architect is NOT the responsible in charge.

Helpful Hints:

- Should be simplified for projects with significant staff size
- CMCI is not interested in other consultants unless they directly impact your relationship with the owner
- CMCI is interested in your placement & role within chart
- Organization chart can be simple, but needs to be legible