

What's included?

A professionally done painting project requires a lot more than meets the eye. The online paint estimator factors in all the extra work required to paint your space. This includes the following:

- All surfaces to be painted will be prepped, washed, and primed.
- All surface imperfections such as holes, cracks, unevenness, etc., will be patched, caulked and texture finished to match existing, prior to painting.
- All area will be masked as needed.
- All floors and furnishings will be covered with drop cloths.
- All work performed and materials used will be in accordance with industry standards.

The estimate and the actual cost may vary due to unforeseen issues, such as the presence of hazardous materials, the need to move large furniture, etc.

The paint estimator is *for interior administrative space only*, such as offices and conference rooms. Estimates for laboratories, public lobbies, building exteriors, etc. can be requested directly through the work order system: <http://om-as.ucdavis.edu/WebWO/>

Did you know...?

When paint is in good condition, it typically takes one hour to paint 100 square feet.
Normally, it takes two extra coats of paint to change the paint color on a wall.

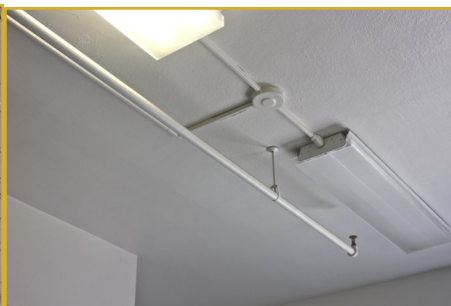
Ceiling Types



Hard



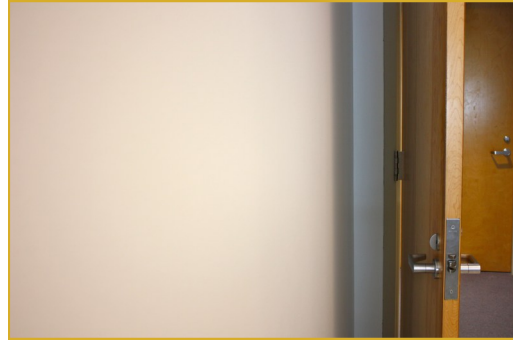
Glued On Acoustic Tile



Open with Obstructions

Assessing Paint Quality

“Good” paint condition means that the walls are clean and smooth, in good condition and free of cracks or holes that need to be filled.



“Fair” paint condition means that there are minor cracks or a small number of nail holes to be filled or the walls are dirty from heavy use beyond normal wear, tear and fingerprints.



“Poor” paint condition means that walls are cracked, damaged and/or very dirty, there are many surface flaws or old nail holes to be patched, there are gummy spots or chemical or oil stains the need to be cleaned or sealed before painting.



“Poor” quality paint results in a higher expense because of the time it takes to repair holes and cracks and allow that to dry prior to painting.