

ORGANIZATIONAL CHART  
Southern Illinois University Carbondale

Office of the Chancellor . . . . .	02
Provost & Vice Chancellor for Academic Affairs . . . . .	03
Associate Provost for Academic Administration . . . . .	04
Associate Provost for Academic Programs . . . . .	05
Assistant Provost & Chief Information Officer . . . . .	06
Assistant Provost Enrollment Management . . . . .	07
Agriculture, College of . . . . .	08
Applied Sciences & Arts, College of . . . . .	09
Business, College of . . . . .	10
Education & Human Services, College of . . . . .	11
Engineering, College of . . . . .	12
Graduate School . . . . .	13
Liberal Arts, College of . . . . .	14
Library Affairs . . . . .	15
Mass Communication & Media Arts, College of . . . . .	16
Science, College of . . . . .	17
University College . . . . .	18
Vice Chancellor for Administration & Finance . . . . .	19
Vice Chancellor for Development & Alumni Relations . . . . .	20
Vice Chancellor for Research . . . . .	21
Vice Chancellor of Student Affairs . . . . .	22
Associate Chancellor for Institutional Diversity . . . . .	23
Executive Director for Finance (Director Budget Office and Institutional Research & Studies) . . . . .	24
Intercollegiate Athletics . . . . .	25
Law, School of . . . . .	26
Medicine, School of . . . . .	27
University Communications & Marketing. . . . .	28

## Office of the Chancellor

### Interim Chancellor

Brad Colwell  
618-453-2341  
[bcolwell@siu.edu](mailto:bcolwell@siu.edu)

#### Business/Administrative Associate

Julie McDannel  
618-453-1373  
[jmcdann@siu.edu](mailto:jmcdann@siu.edu)

#### Assistant to the Chancellor

Matt Baughman  
618-453-1378  
[baughman@siu.edu](mailto:baughman@siu.edu)

#### Interim Provost & Vice Chancellor for Academic Affairs

Susan Ford  
618-453-5744  
[provost@siu.edu](mailto:provost@siu.edu)

#### Vice Chancellor for Administration & Finance

Kevin Bame  
618-453-2474  
[kbame@siu.edu](mailto:kbame@siu.edu)

#### Vice Chancellor for Development & Alumni Relations

James Salmo  
618-453-7174  
[jims@foundation.siu.edu](mailto:jims@foundation.siu.edu)

#### Interim Vice Chancellor for Research

James Garvey  
618-536-7761  
[jgarvey@siu.edu](mailto:jgarvey@siu.edu)

#### Interim Vice Chancellor of Student Affairs

Lori Lynn Stettler  
618-453-3496  
[loris@siu.edu](mailto:loris@siu.edu)

#### Associate Chancellor for Institutional Diversity

VACANT  
618-453-1186

#### Dean & Provost School of Medicine

Jerry Kruse  
217-545-3625  
[jkruse@siumed.edu](mailto:jkruse@siumed.edu)

#### Dean, School of Law

Cynthia Fountaine  
618-453-8761  
[cfountaine@siu.edu](mailto:cfountaine@siu.edu)

#### Executive Director for Finance

Judy Marshall\*  
618-536-2626  
[jmarshall@siu.edu](mailto:jmarshall@siu.edu)

#### Executive Director, Economic Development

Kyle Harfst  
618-453-3427  
[harfst@siu.edu](mailto:harfst@siu.edu)

#### Director, Head Start

Lea Maue  
618-453-6448  
[lea.maue@siu.edu](mailto:lea.maue@siu.edu)

#### Director, Intercollegiate Athletics

Tommy Bell  
618-453-7250  
[tbell@siu.edu](mailto:tbell@siu.edu)

#### Chief Marketing & Communications Officer

Rae Goldsmith  
618-453-2589  
[rae.goldsmith@siu.edu](mailto:rae.goldsmith@siu.edu)

#### Business/Administrative Associate, University Events & Protocol

Vanessa Sneed  
618-453-7419  
[vsneed@siu.edu](mailto:vsneed@siu.edu)

\*Also retaining role as Director, Budget Office and  
Institutional Research & Studies (page 24)

## Provost & Vice Chancellor for Academic Affairs

Reports to the Chancellor

### Interim Provost & Vice Chancellor for Academic Affairs

Susan M. Ford  
618-453-5744  
[provost@siu.edu](mailto:provost@siu.edu)

#### Administrative Assistant

Sharon Brooks  
618-453-7648  
[sharon@siu.edu](mailto:sharon@siu.edu)

#### Business/Administrative Associate

Cheryl Reinhardt  
618-453-2624  
[creinhar@siu.edu](mailto:creinhar@siu.edu)

#### Associate Provost for Academic Administration

David DiLalla  
618-536-5535  
[ddilalla@siu.edu](mailto:ddilalla@siu.edu)

#### Associate Provost for Academic Programs

James Allen  
618-453-7653  
[jsallen@siu.edu](mailto:jsallen@siu.edu)

#### Interim Chief Information Officer

Scott Bridges  
618-453-6239  
[bridges@siu.edu](mailto:bridges@siu.edu)

#### Assistant Provost for Enrollment Management

VACANT

#### Dean, College of Agricultural Sciences

Mickey Latour  
618-453-2469  
[mlatour@siu.edu](mailto:mlatour@siu.edu)

#### Dean, College of Applied Sciences & Arts

Ju An (Andy) Wang  
618-453-8840  
[awang@siu.edu](mailto:awang@siu.edu)

#### Dean, College of Business

Terry Clark  
618-453-7967  
[tclark@business.siu.edu](mailto:tclark@business.siu.edu)

#### Dean, College of Education & Human Services

Matthew W. Keefer  
618-453-7313  
[coehsdean@siu.edu](mailto:coehsdean@siu.edu)

#### Dean, College of Engineering

John Warwick  
618-453-4321  
[jwarwick@siu.edu](mailto:jwarwick@siu.edu)

#### Dean, Graduate School

Yueh-Ting Lee  
618-453-4527  
[leey@siu.edu](mailto:leey@siu.edu)

#### Dean, College of Liberal Arts

Meera Komarraju  
618-453-2466  
[coladean@siu.edu](mailto:coladean@siu.edu)

#### Dean, Library Affairs

Vacant  
618-453-1446

#### Dean, Mass Communication & Media Arts

Dafna Lemish  
618-453-7708  
[dafnalemish@siu.edu](mailto:dafnalemish@siu.edu)

#### Dean, College of Science

Laurie Achenbach  
618-536-6666  
[laurie@cos.siu.edu](mailto:laurie@cos.siu.edu)

#### Interim Dean, University College

Laurie Bell  
618-453-1828  
[lbell@siu.edu](mailto:lbell@siu.edu)

#### Director, Center for Teaching Excellence

Karla Berry  
618-453-2258  
[k.berry@siu.edu](mailto:k.berry@siu.edu)

#### Director, Paul Simon Public Policy Institute

David Yepsen  
618-453-4003  
[dyepsen@siu.edu](mailto:dyepsen@siu.edu)

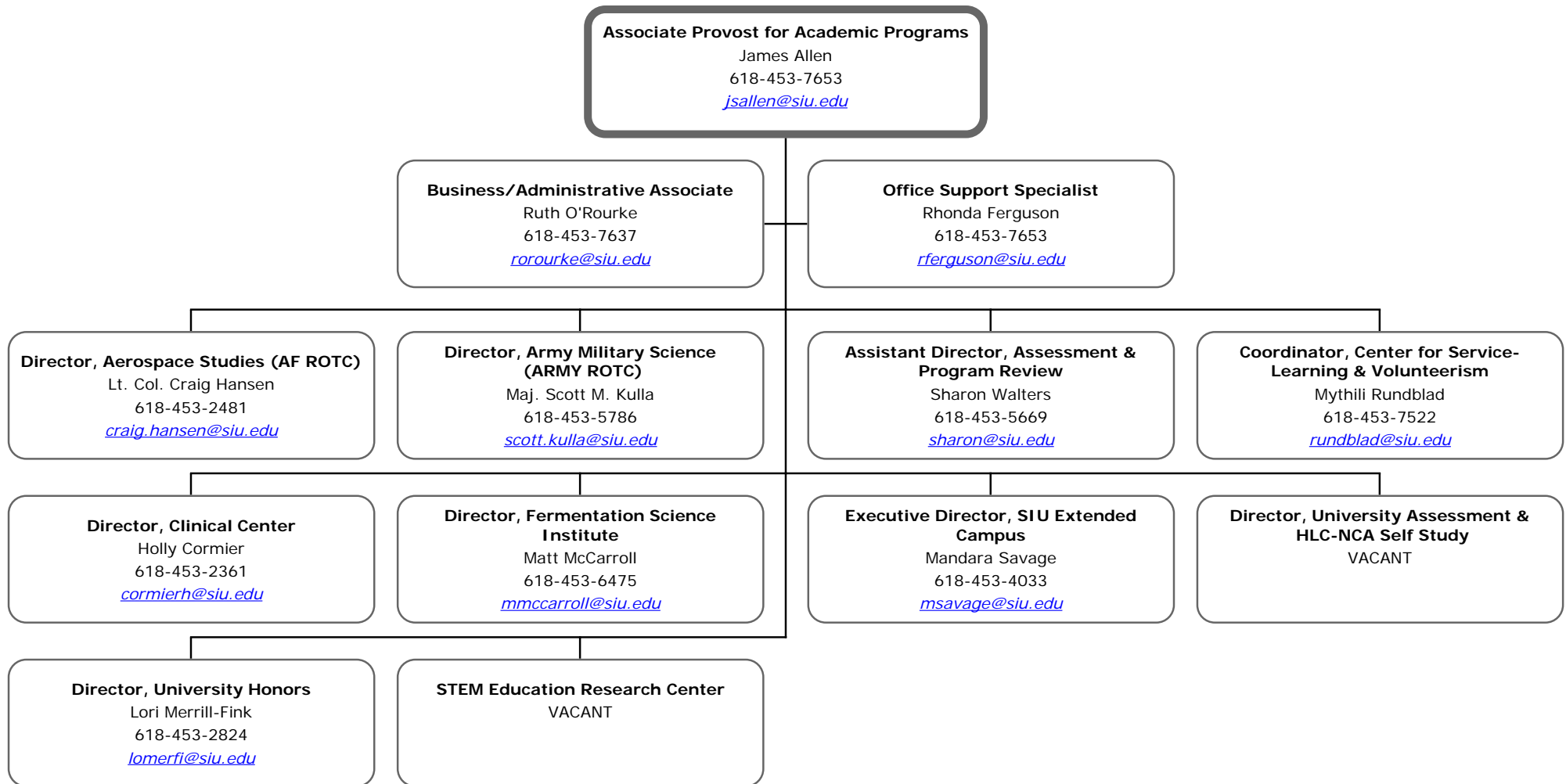
#### Interim Director, Center for International Education

Andrew Carver  
618-453-5774  
[acarver@siu.edu](mailto:acarver@siu.edu)

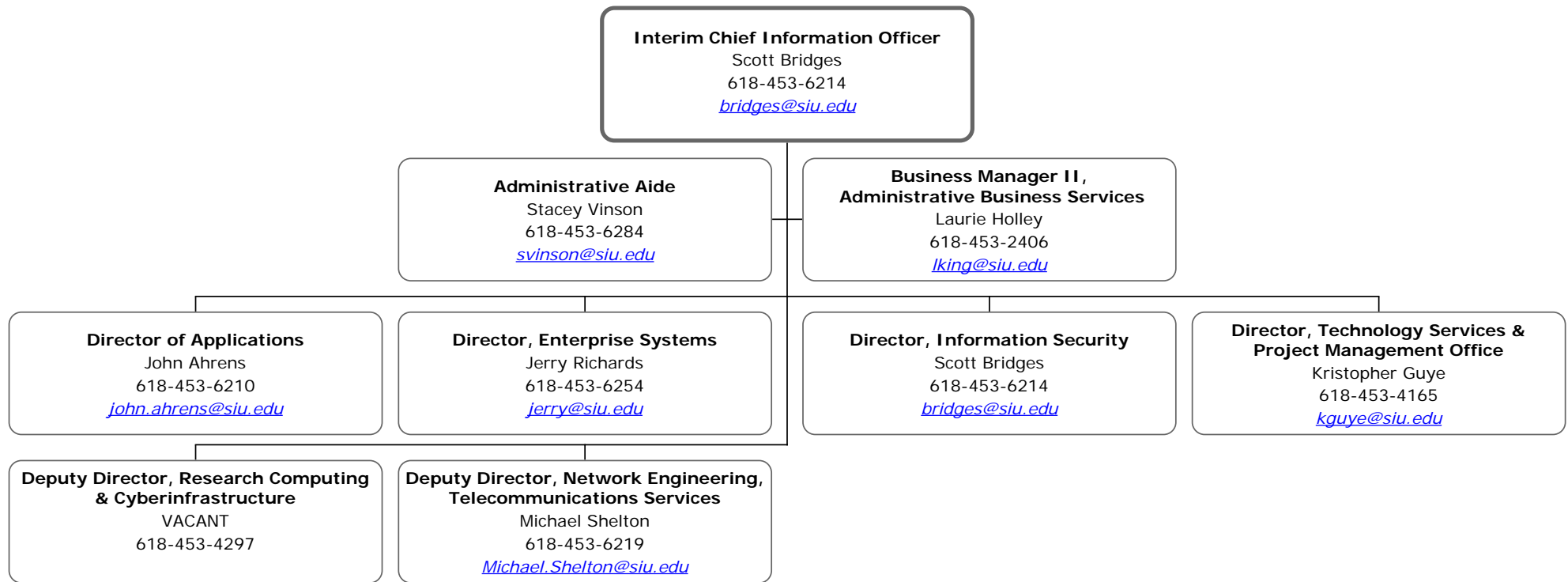
**Associate Provost for Academic Administration**  
Reports to the Provost & Vice Chancellor for Academic Affairs



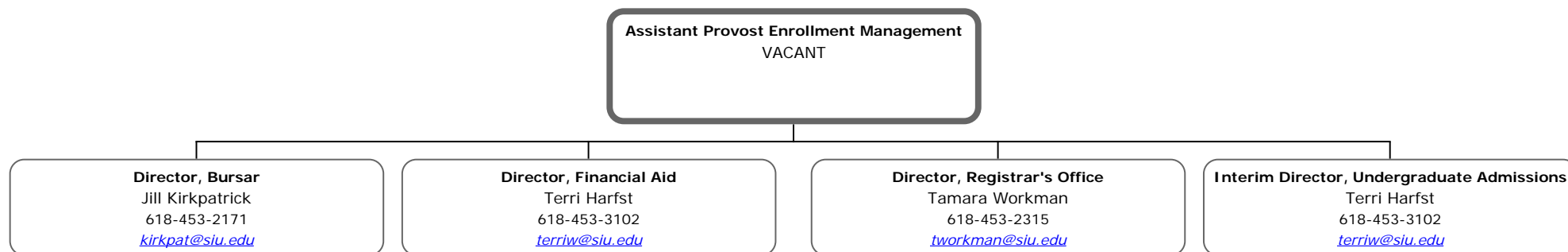
**Associate Provost for Academic Programs**  
Reports to the Provost & Vice Chancellor for Academic Affairs



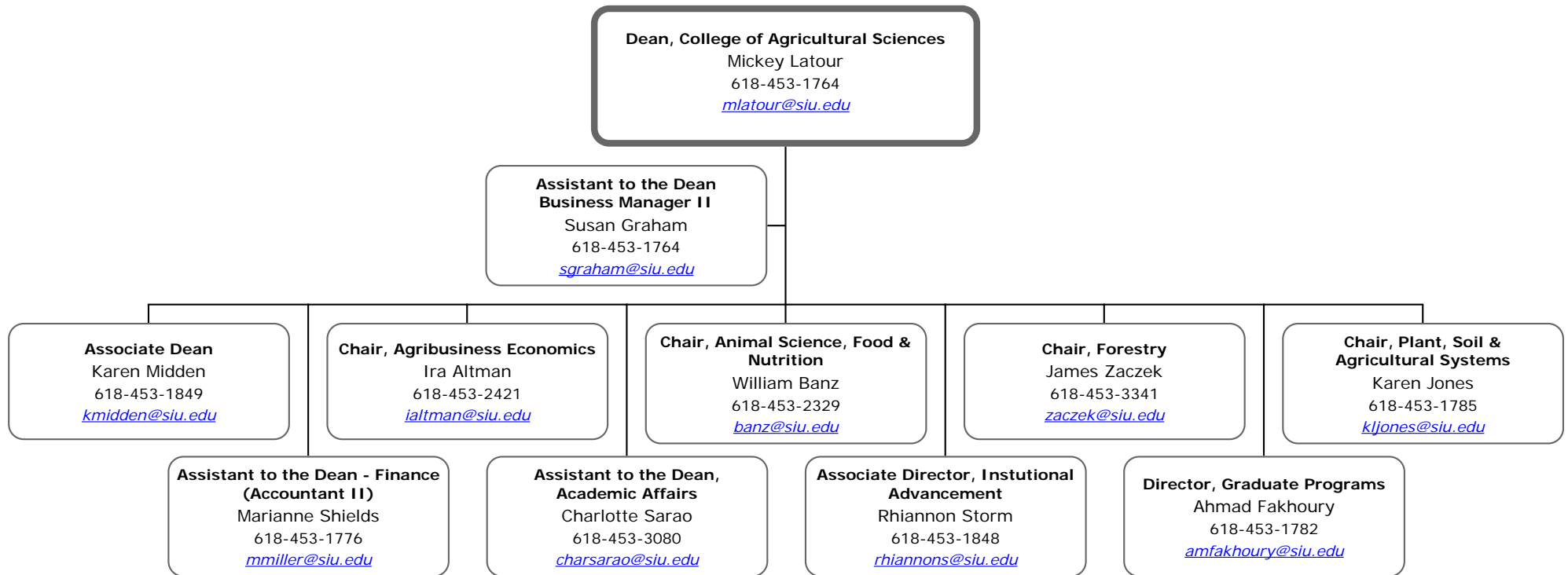
**Assistant Provost & Chief Information Officer**  
Reports to the Provost & Vice Chancellor for Academic Affairs



**Assistant Provost Enrollment Management**  
Reports to the Provost & Vice Chancellor for Academic Affairs

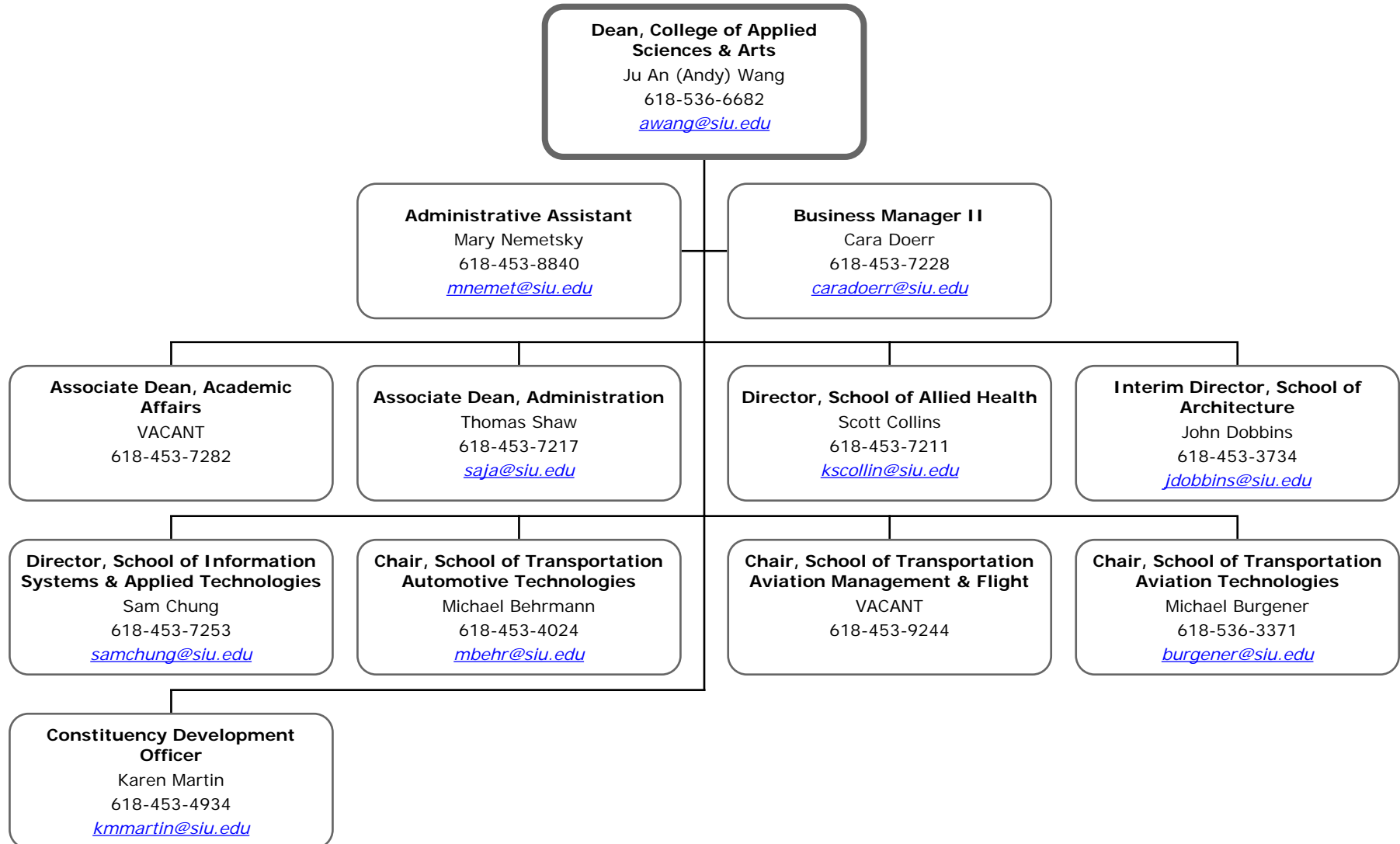


**College of Agricultural Sciences**  
Reports to the Provost and Vice Chancellor for Academic Affairs



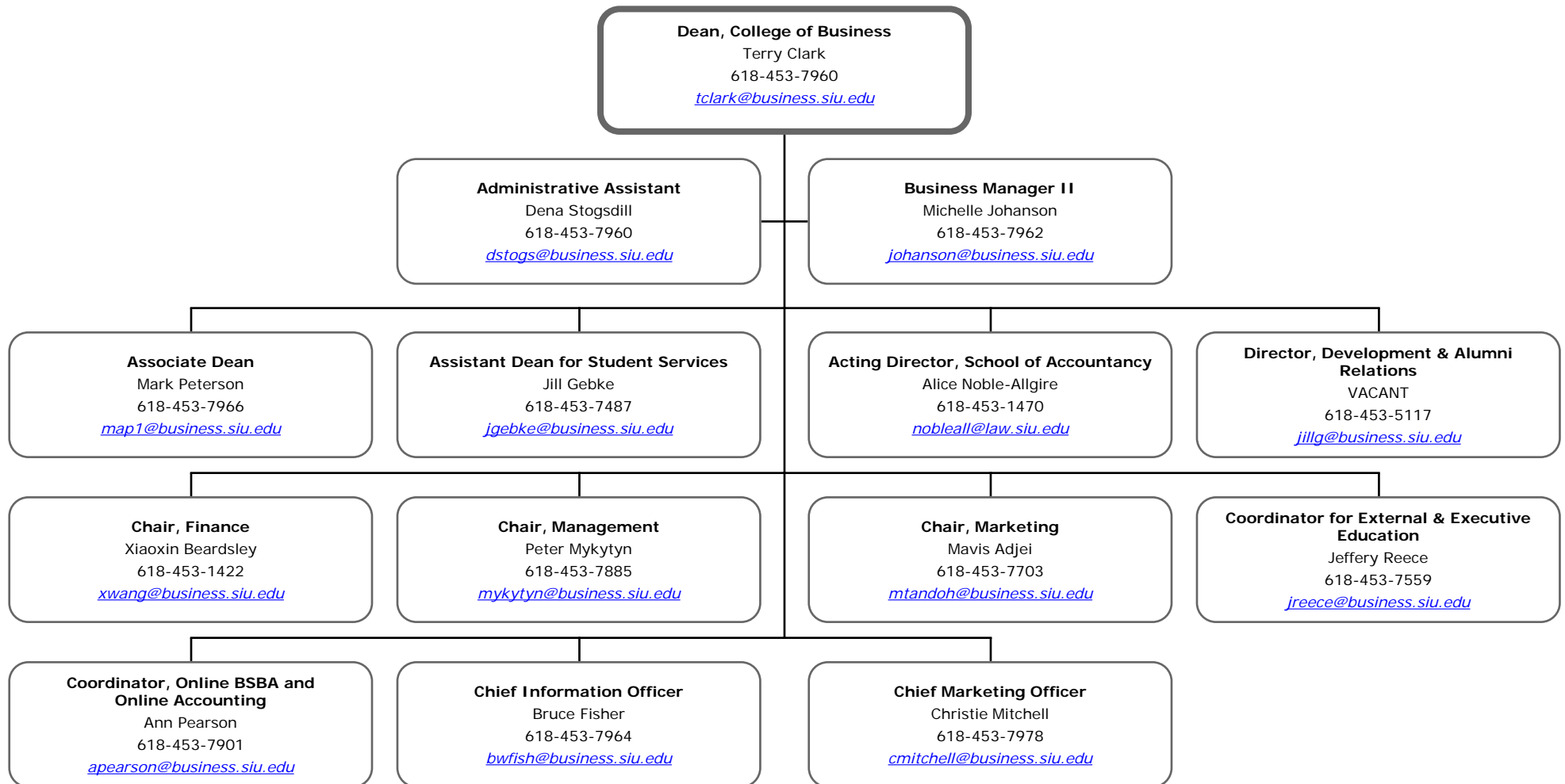


**College of Applied Sciences and Arts**  
Reports to the Provost and Vice Chancellor for Academics Affairs

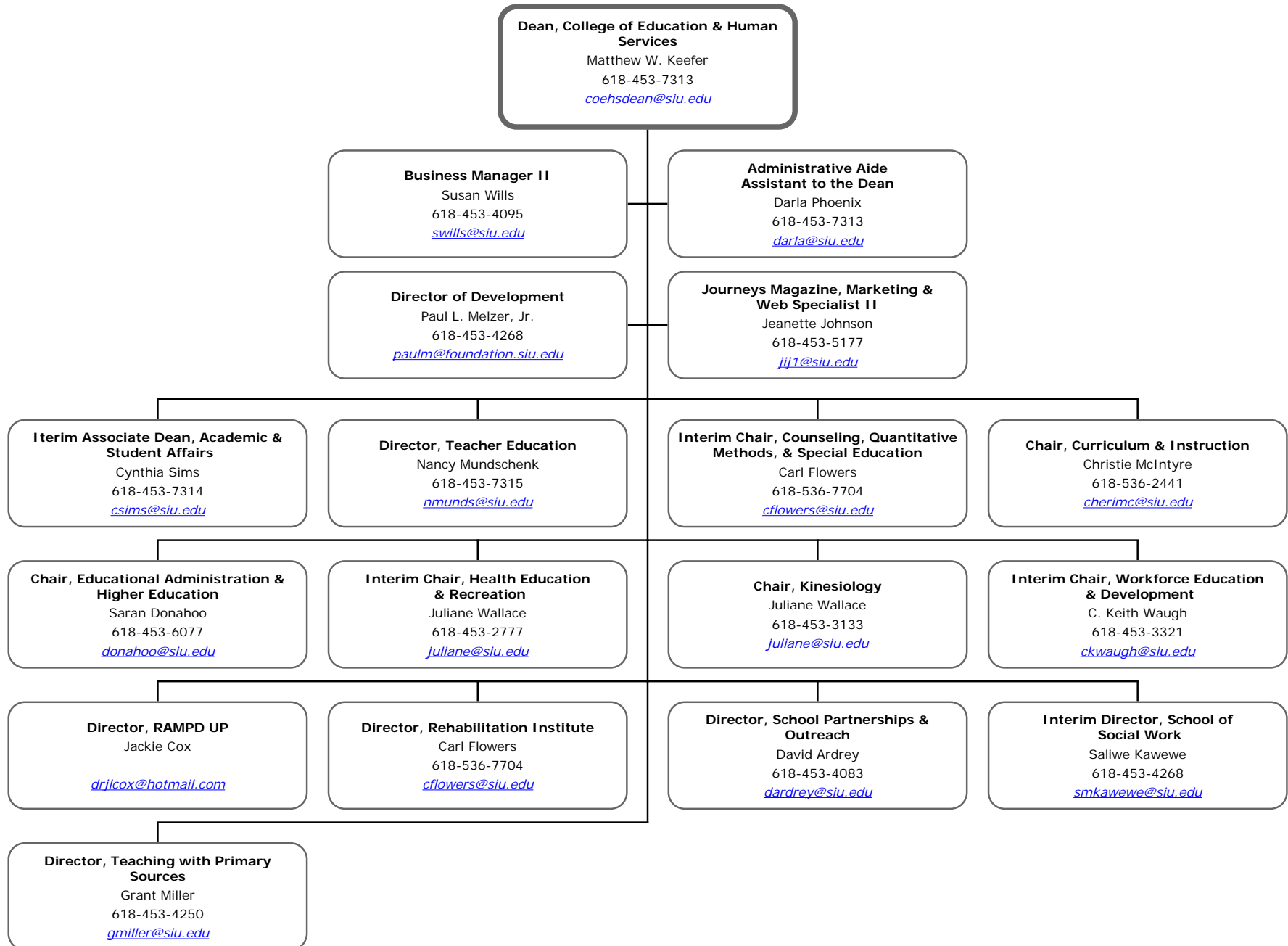


# College of Business

Reports to the Provost & Vice Chancellor for Academic Affairs

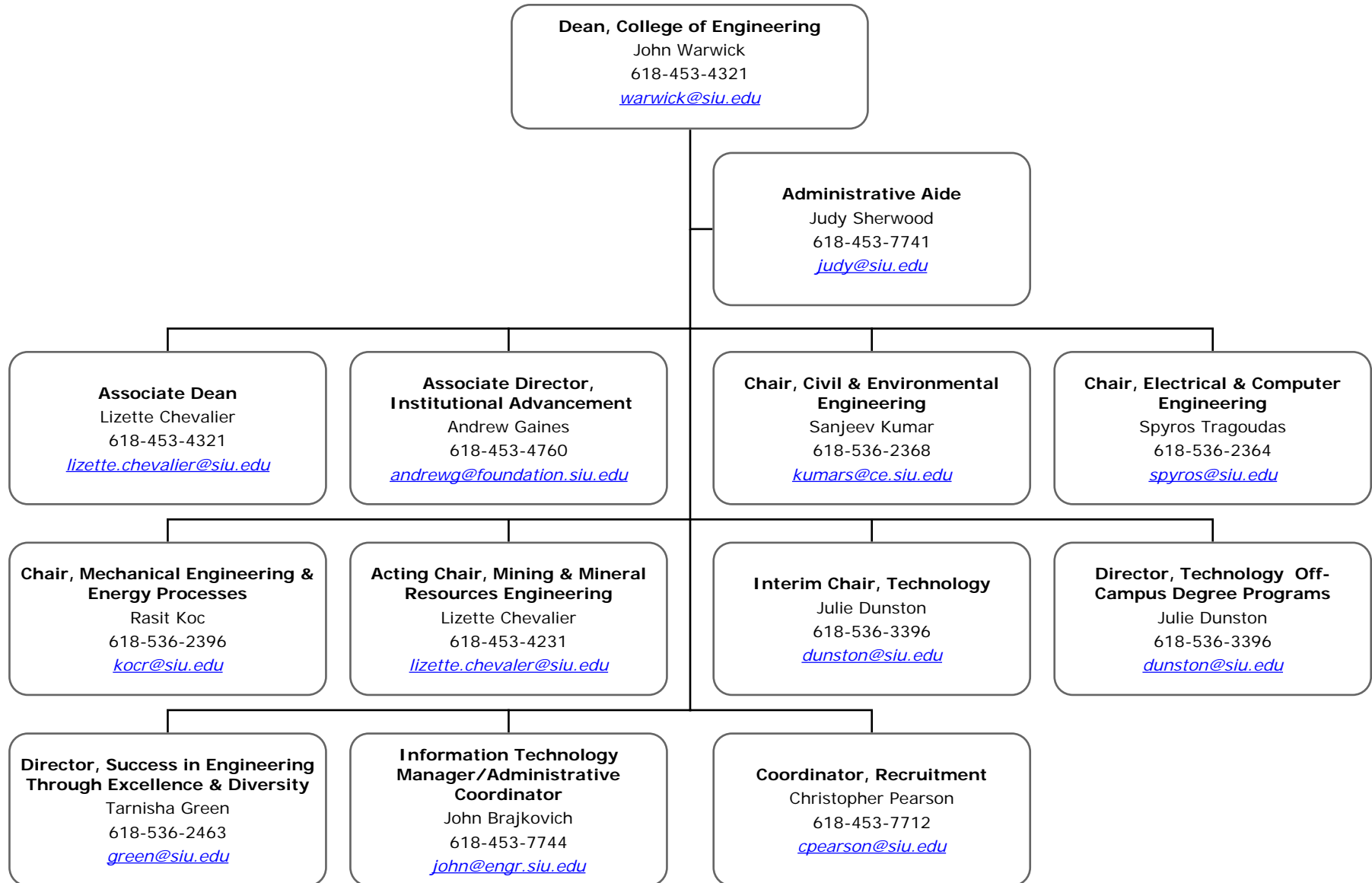


**College of Education & Human Services**  
Reports to Provost & Vice Chancellor For Academic Affairs

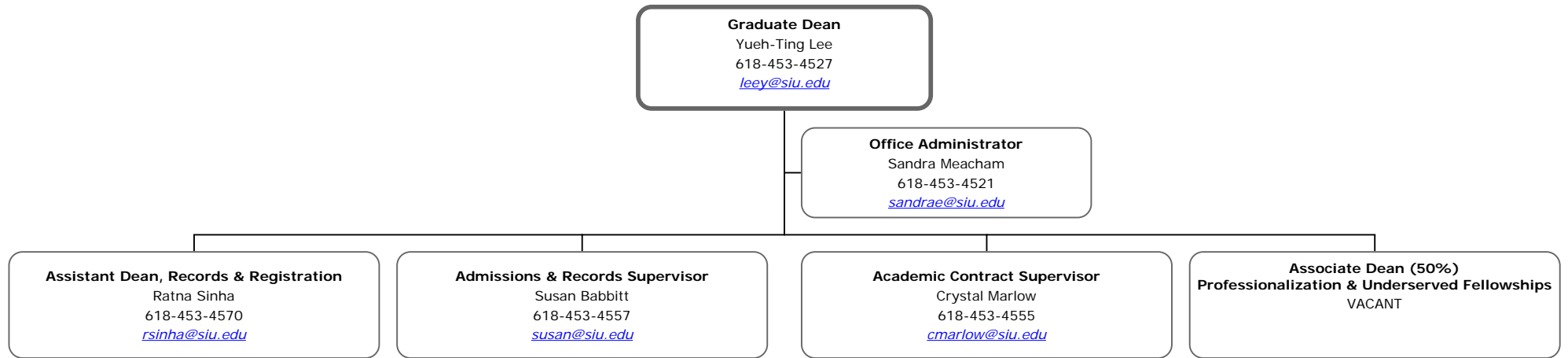


# College of Engineering

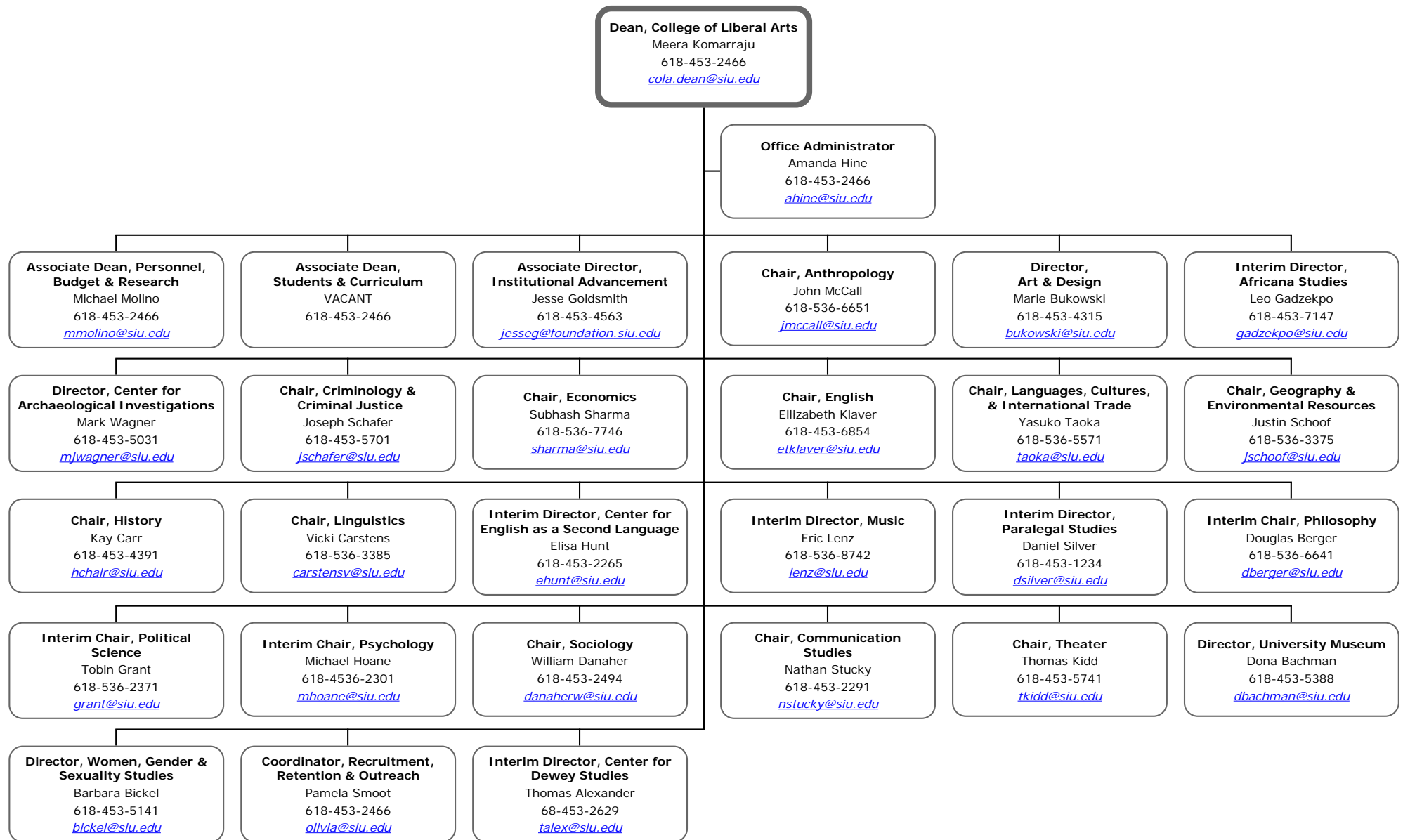
Reports to the Provost & Vice Chancellor for Academic Affairs



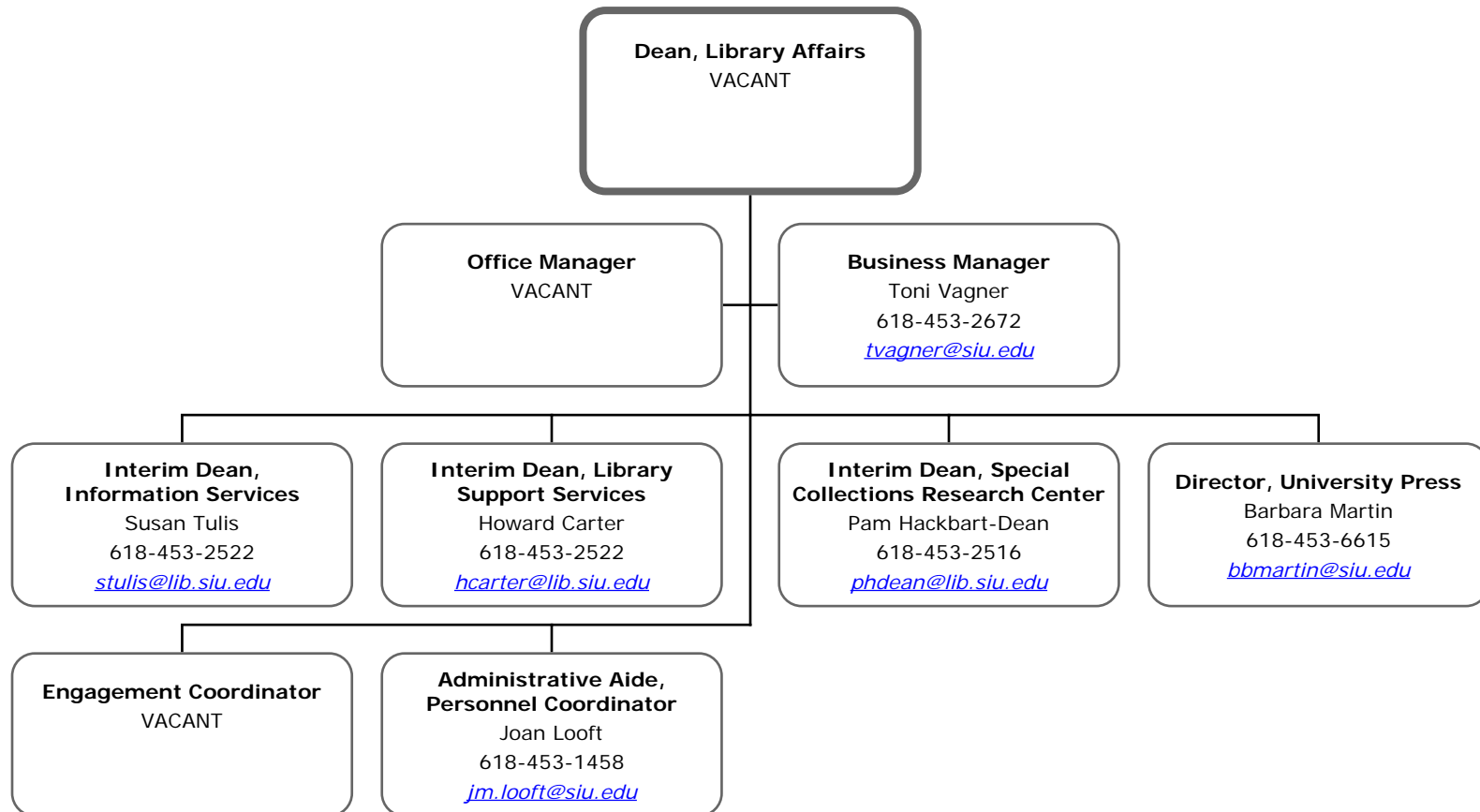
**Graduate School**  
Reports to the Provost & Vice Chancellor for Academic Affairs



**College of Liberal Arts**  
Reports to the Provost & Vice Chancellor for Academic Affairs



**Library Affairs**  
Reports to the Provost & Vice Chancellor for Academic Affairs



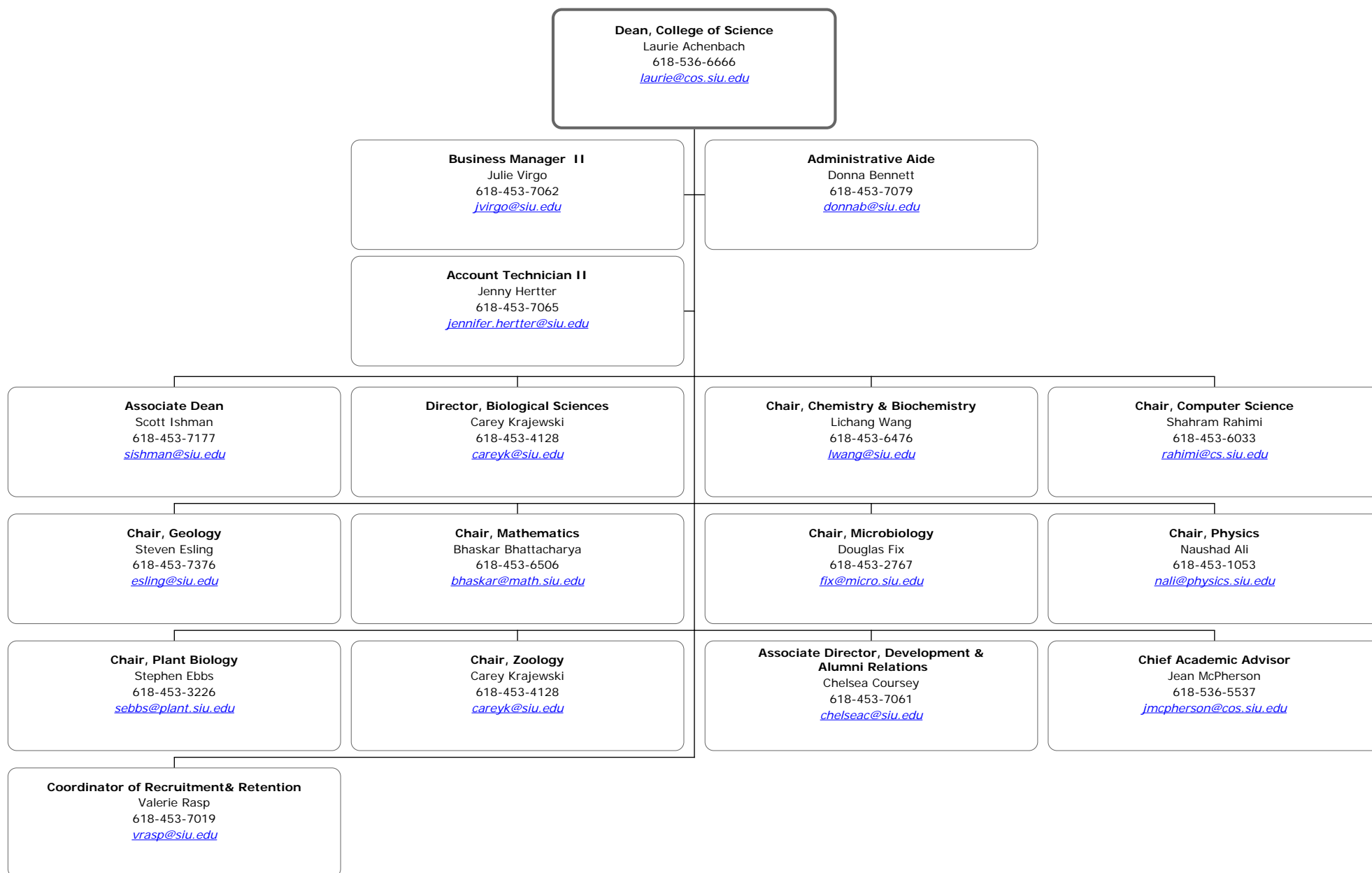
**College of Mass Communication & Media Arts**  
Reports to the Provost & Vice Chancellor for Academic Affairs



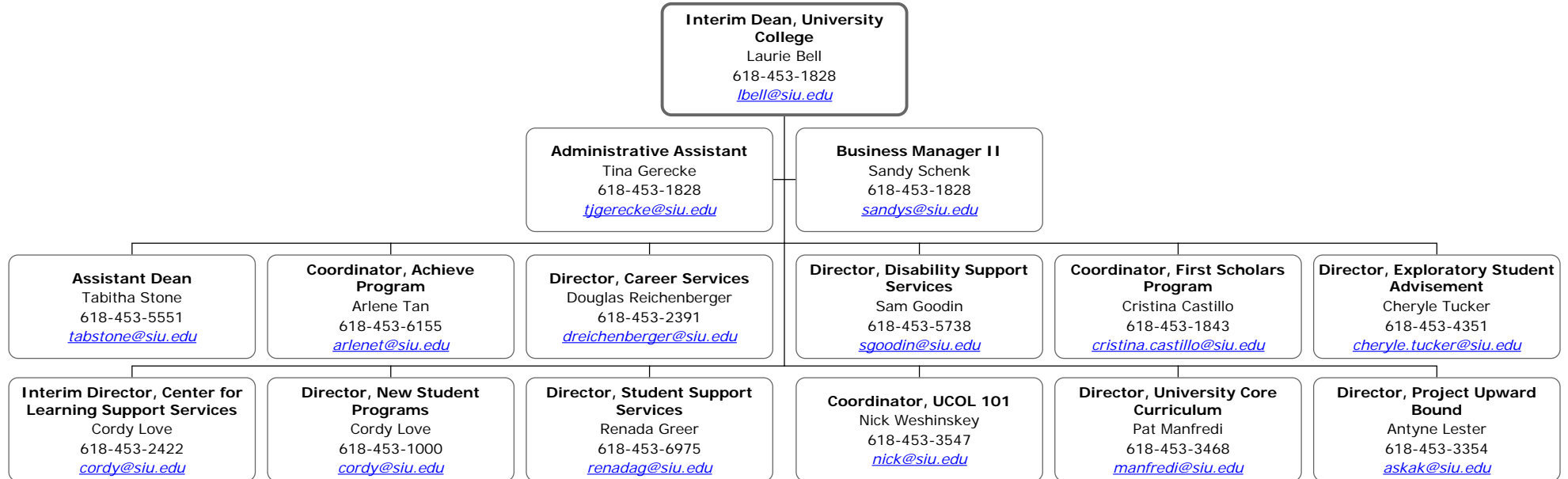


## College of Science

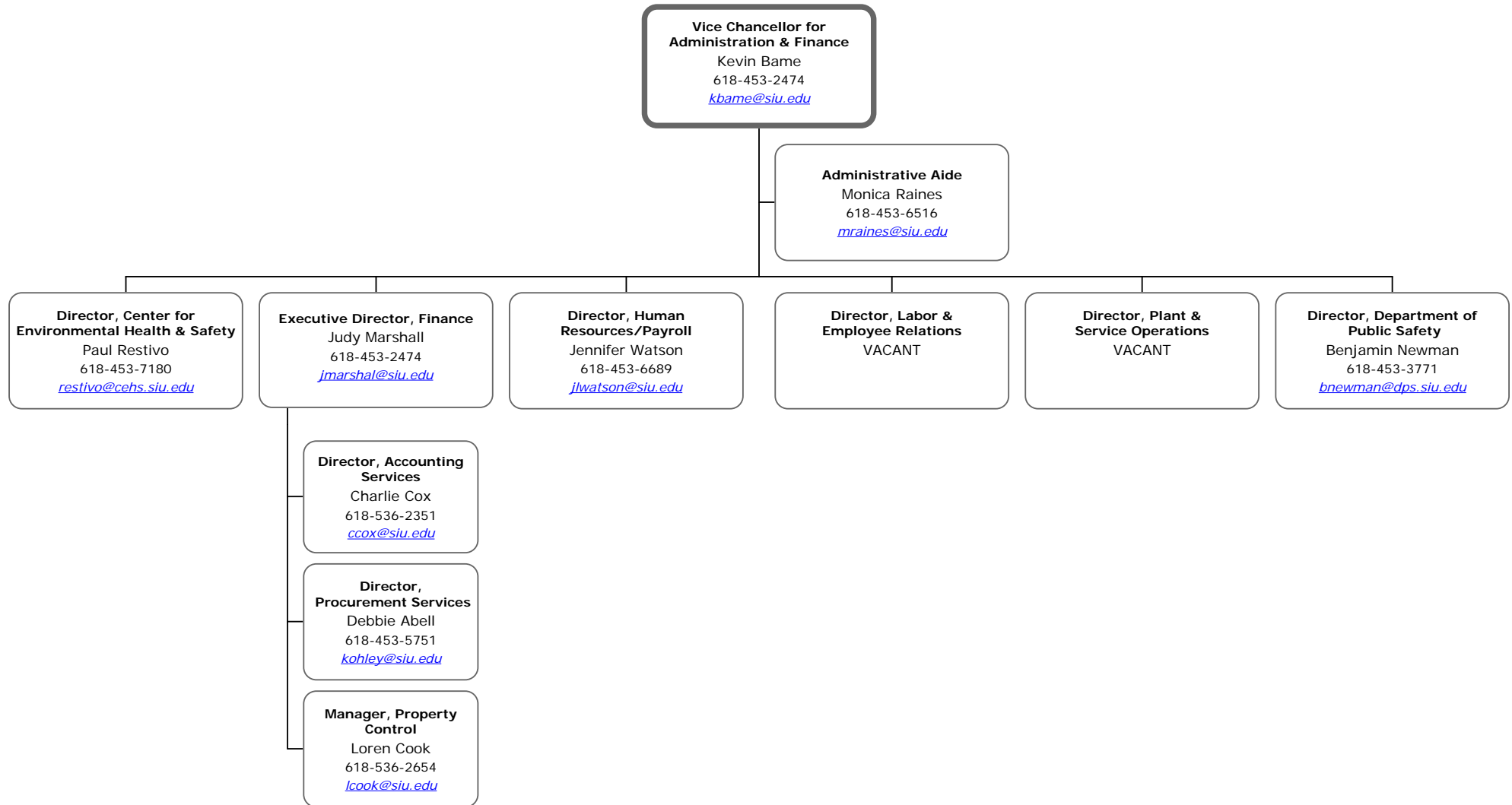
Reports to the Provost and Vice Chancellor for Academic Affairs



**University College**  
Reports to the Provost & Vice Chancellor for Academic Affairs

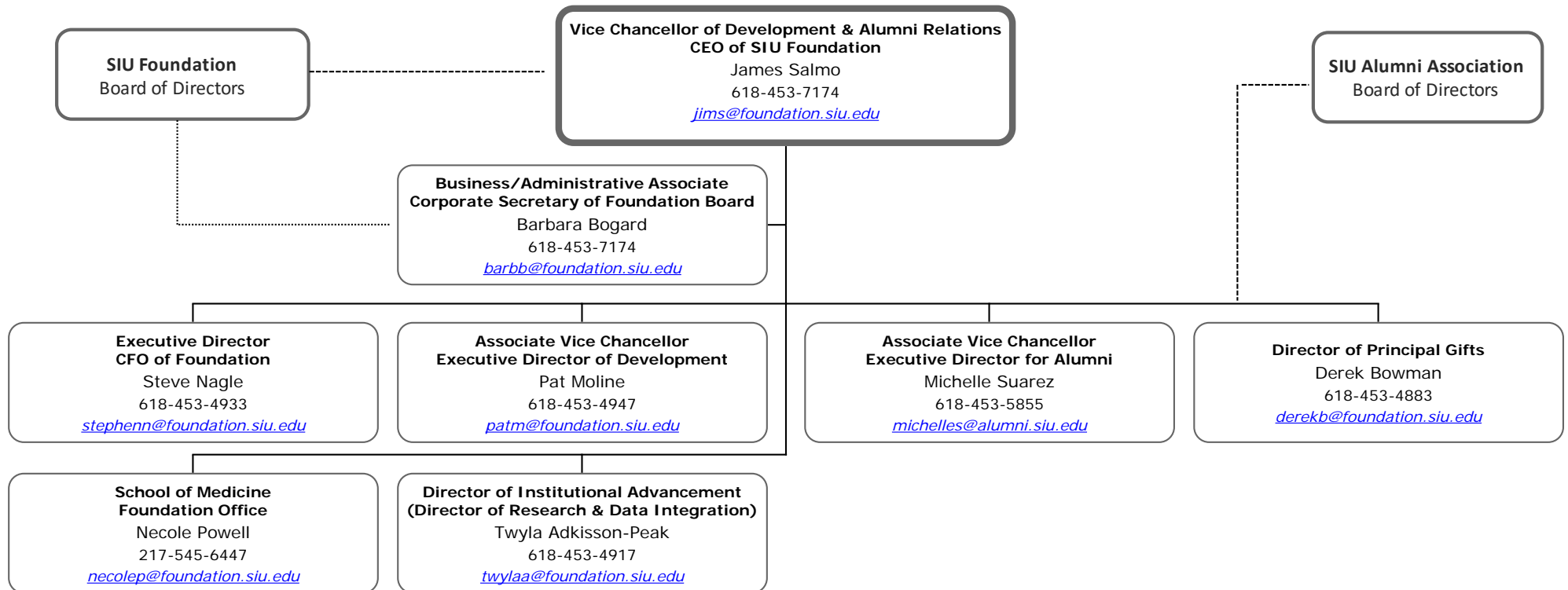


**Vice Chancellor for Administration and Finance**  
Reports to the Chancellor



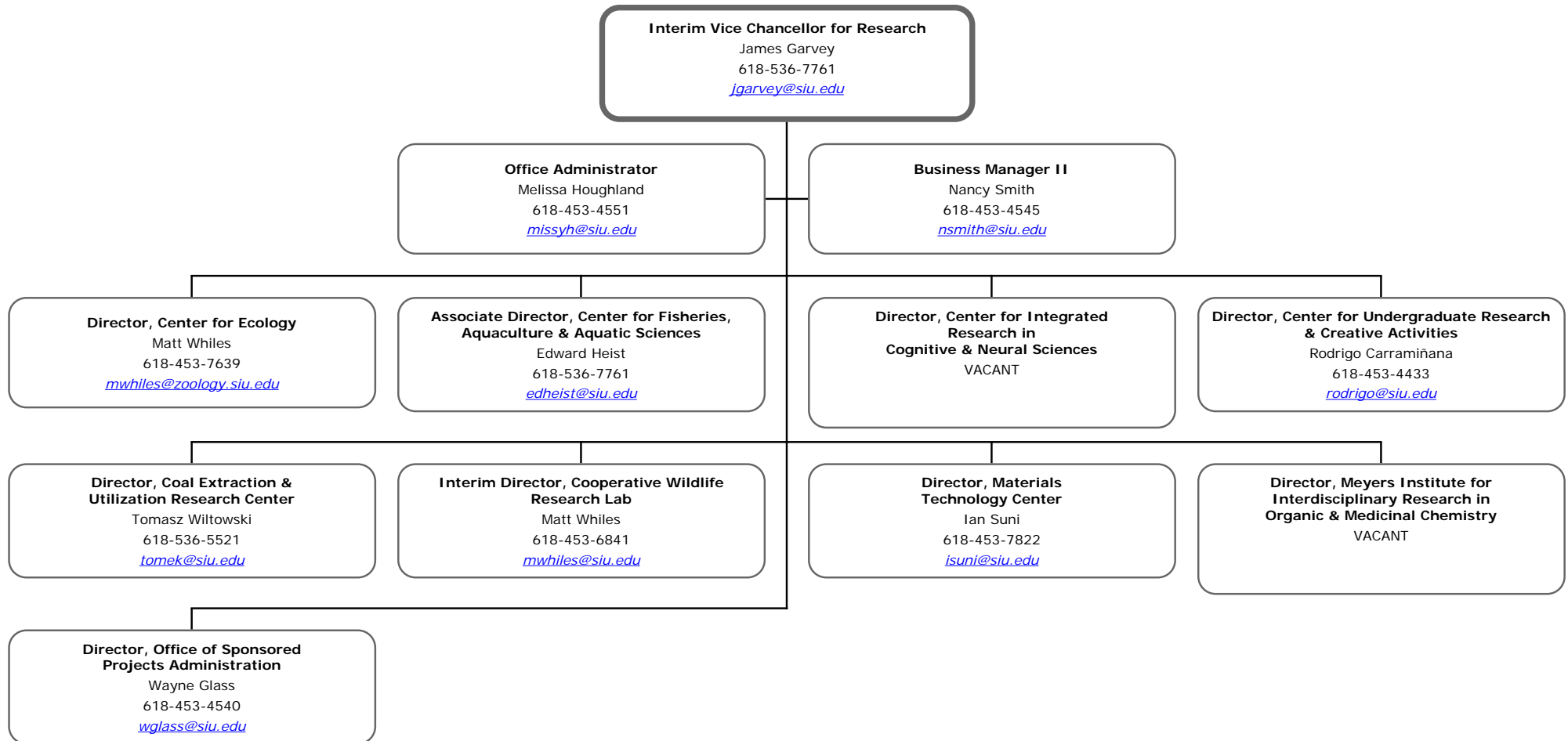
## Vice Chancellor for Development and Alumni Relations

Reports to the Chancellor



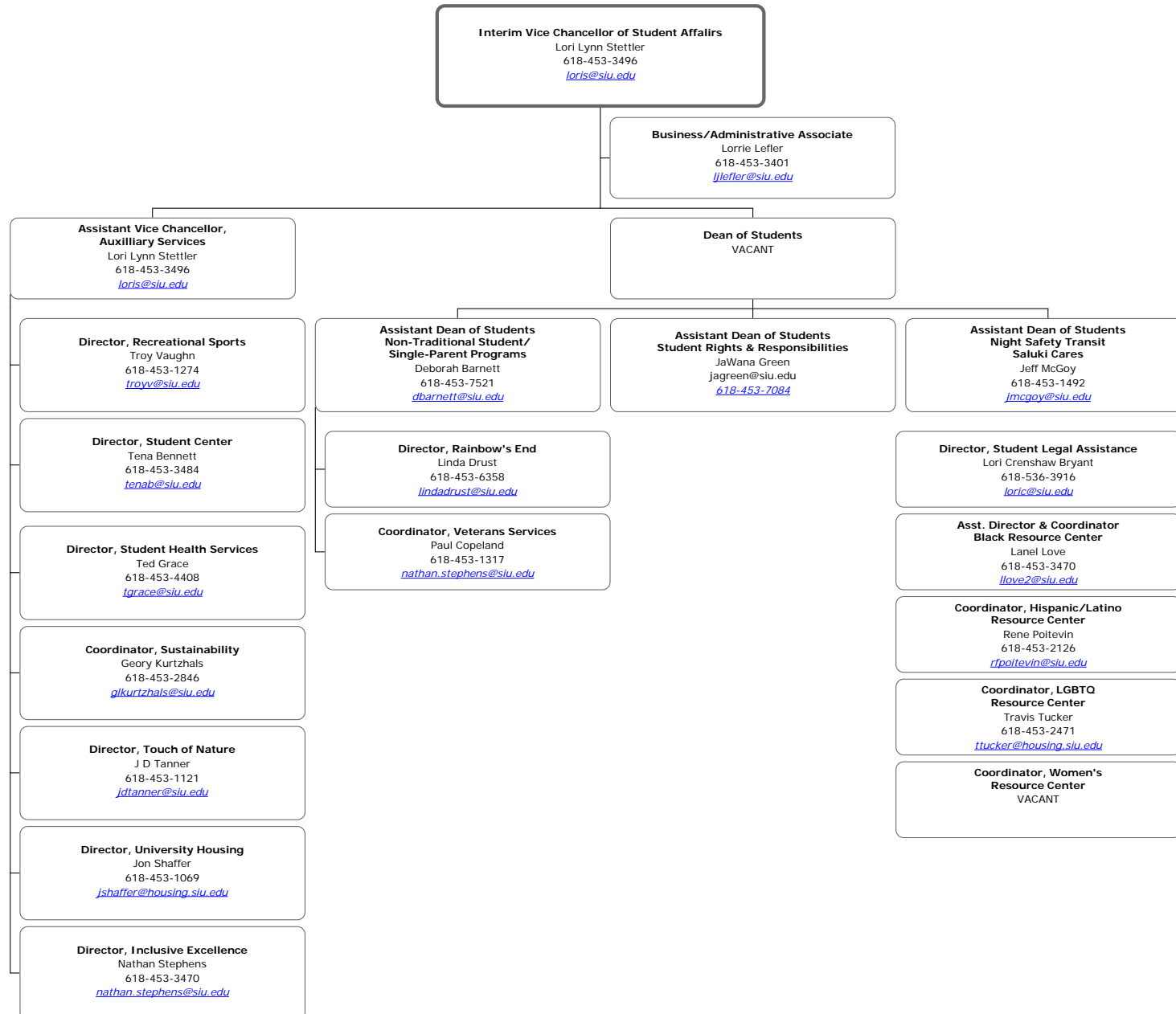
## Vice Chancellor for Research

Reports to the Chancellor

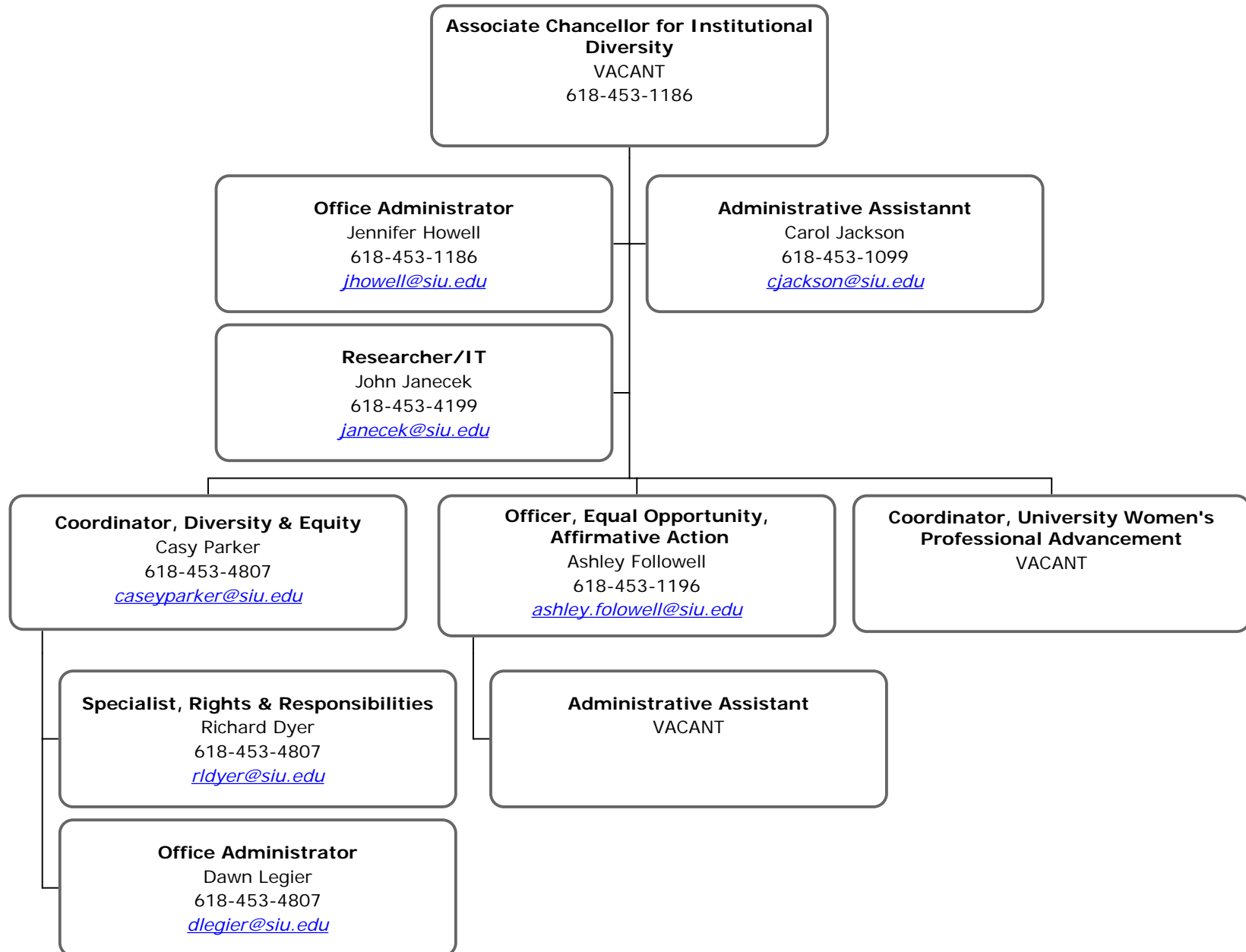


# Vice Chancellor of Student Affairs

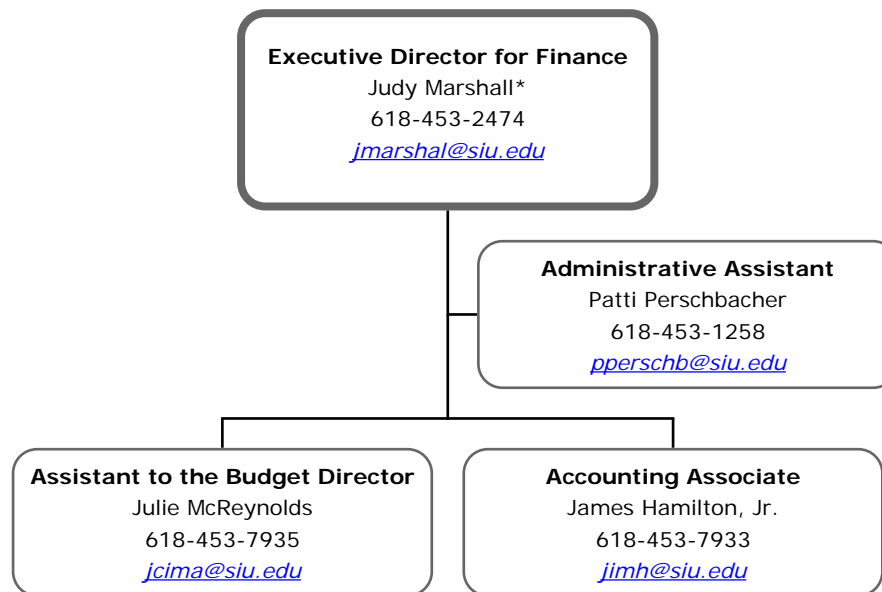
## Reports to the Chancellor



## Office of Associate Chancellor for Institutional Diversity



**Executive Director for Finance**  
**(Director, Budget Office and**  
**Institutional Research & Studies)**  
Reports to the Chancellor

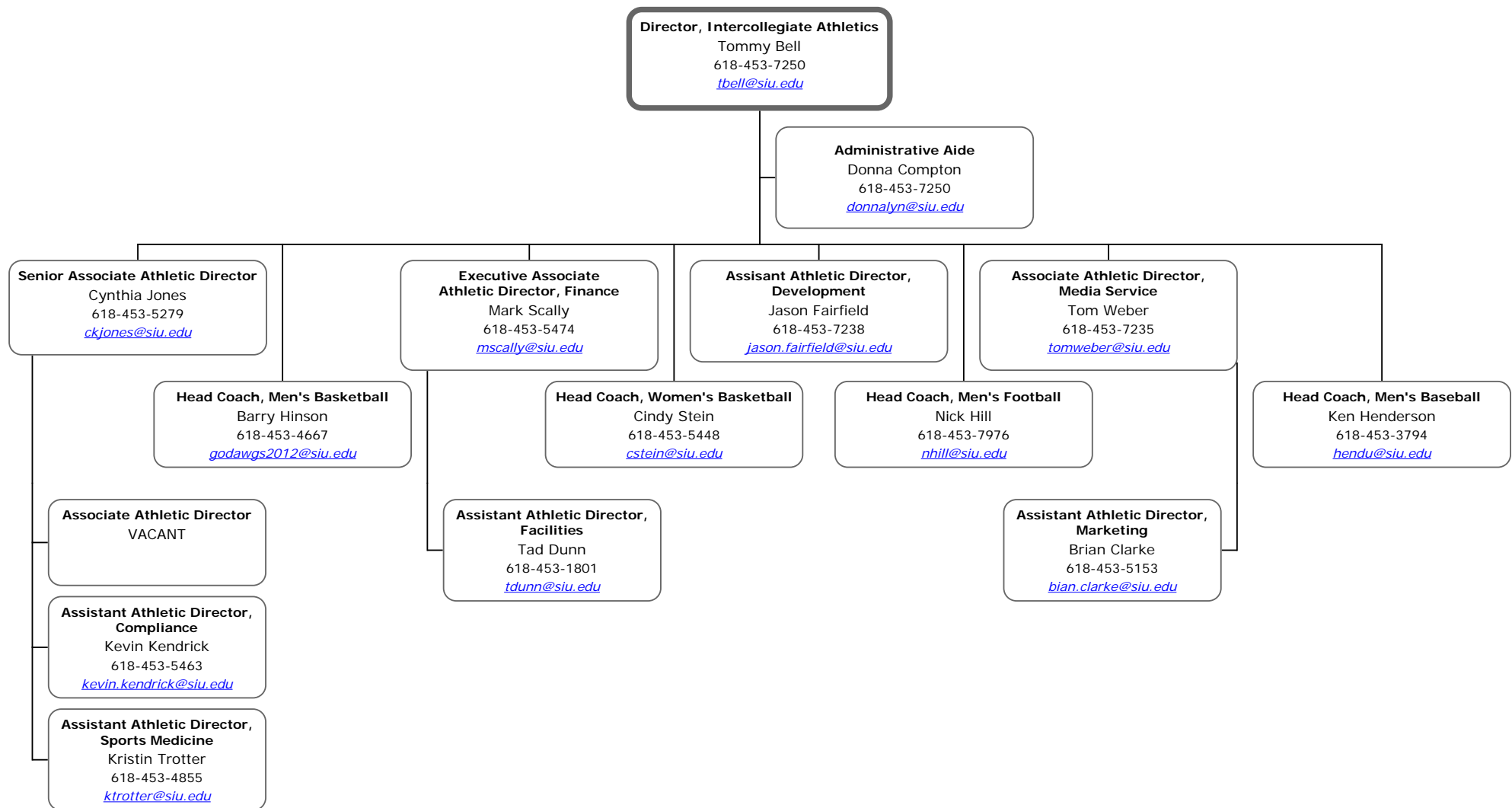


\*Also retaining role as Director, Budget Office and  
Institution Research & Studies

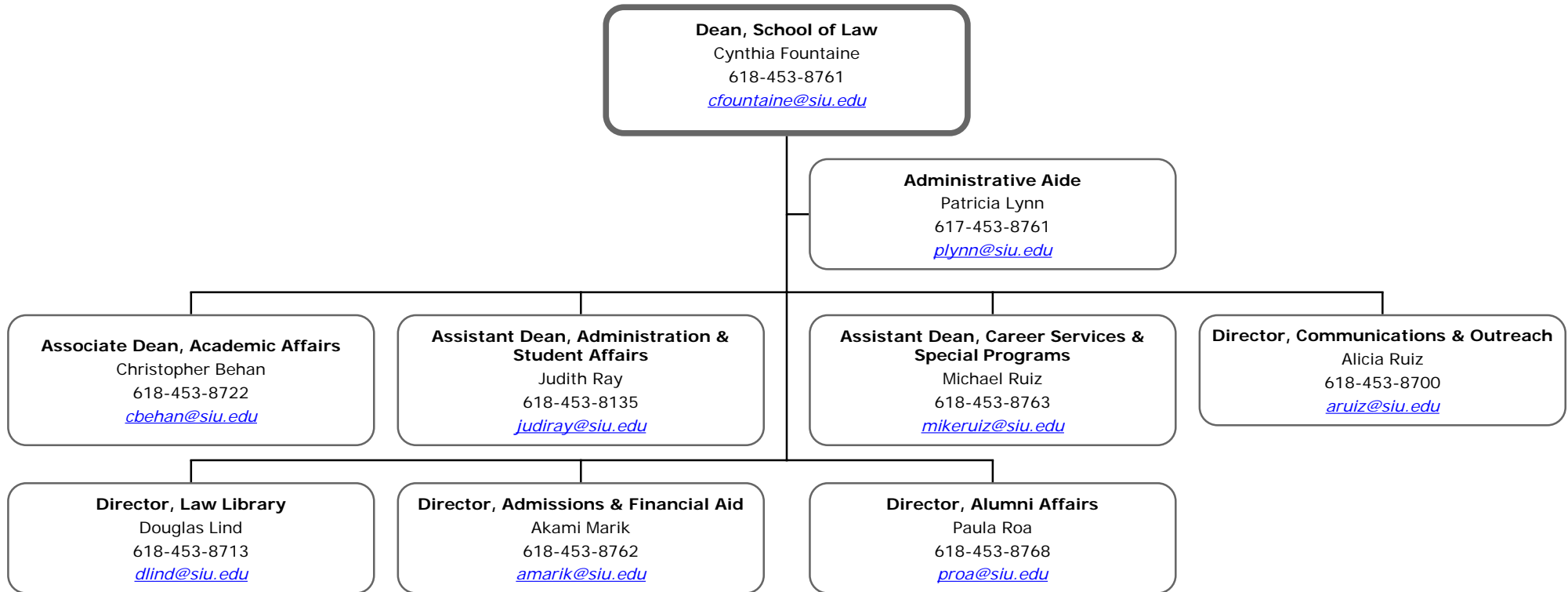


## Intercollegiate Athletics

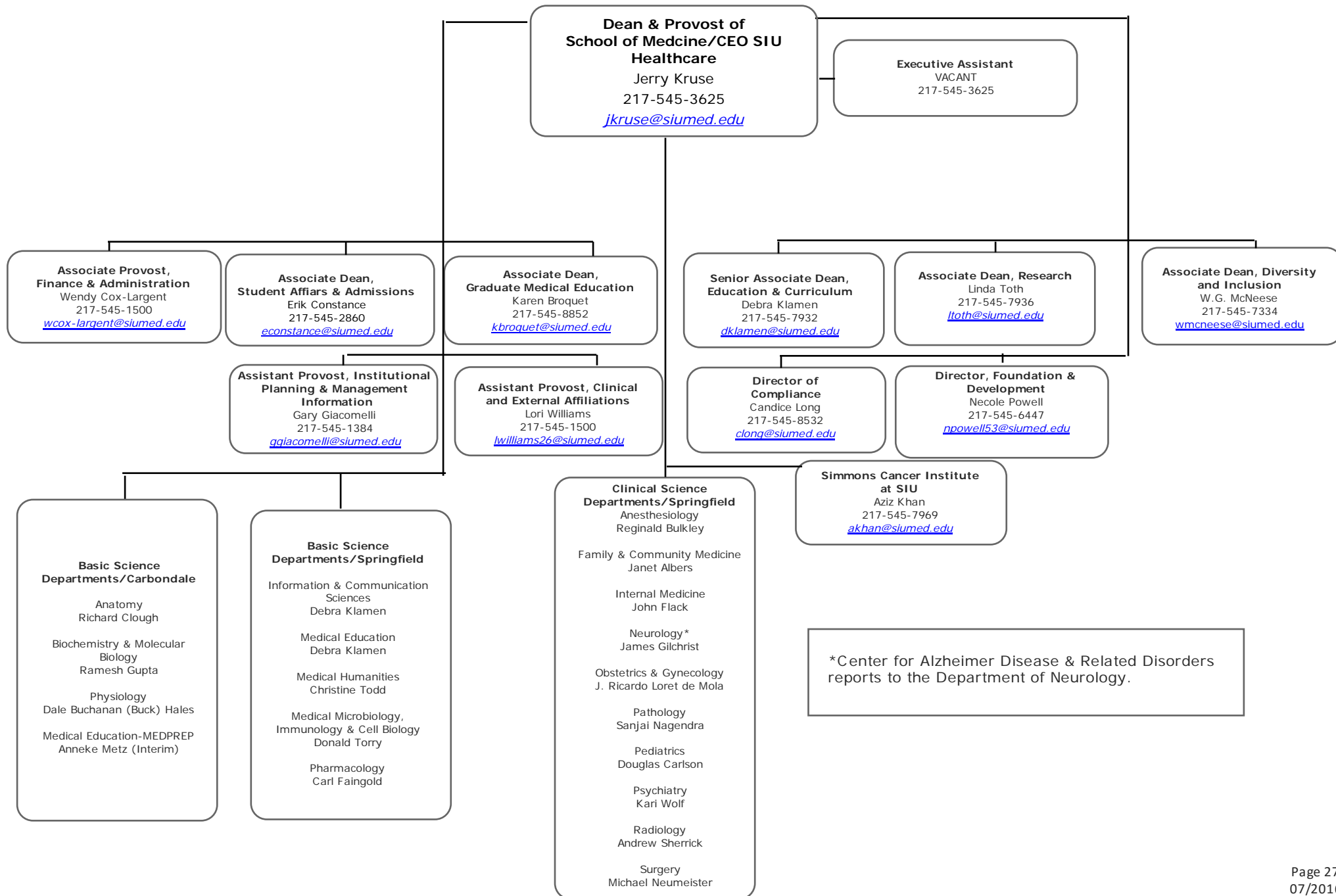
Reports to the Chancellor



**School of Law**  
Reports to the Chancellor



# School of Medicine Reports to the Chancellor



# University Communications & Marketing

Reports to the Chancellor

