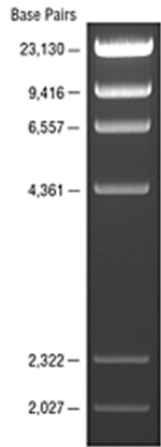
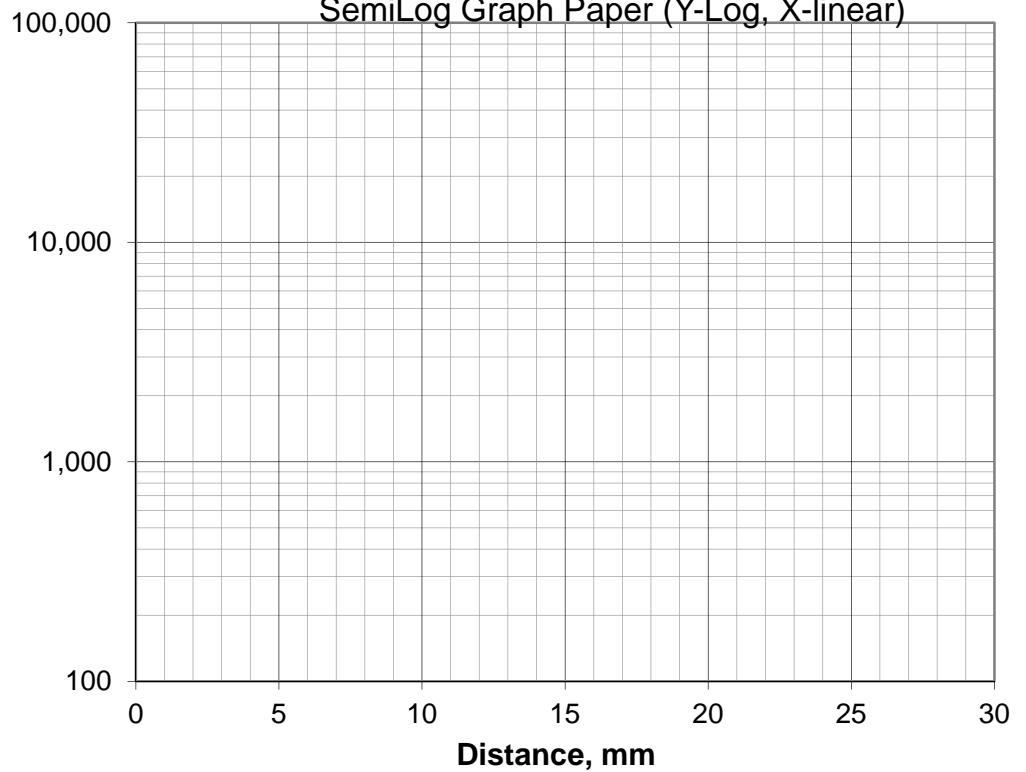


Base pair length Reference for lambda HindIII digest from NEB. FYI, there can be an additional band of 564bp and 125bp, but they are rarely visible

*Use the STANDARD CURVE graphed above to determine the Size of the Fragments in other lanes*

Size, base pairs

SemiLog Graph Paper (Y-Log, X-linear)

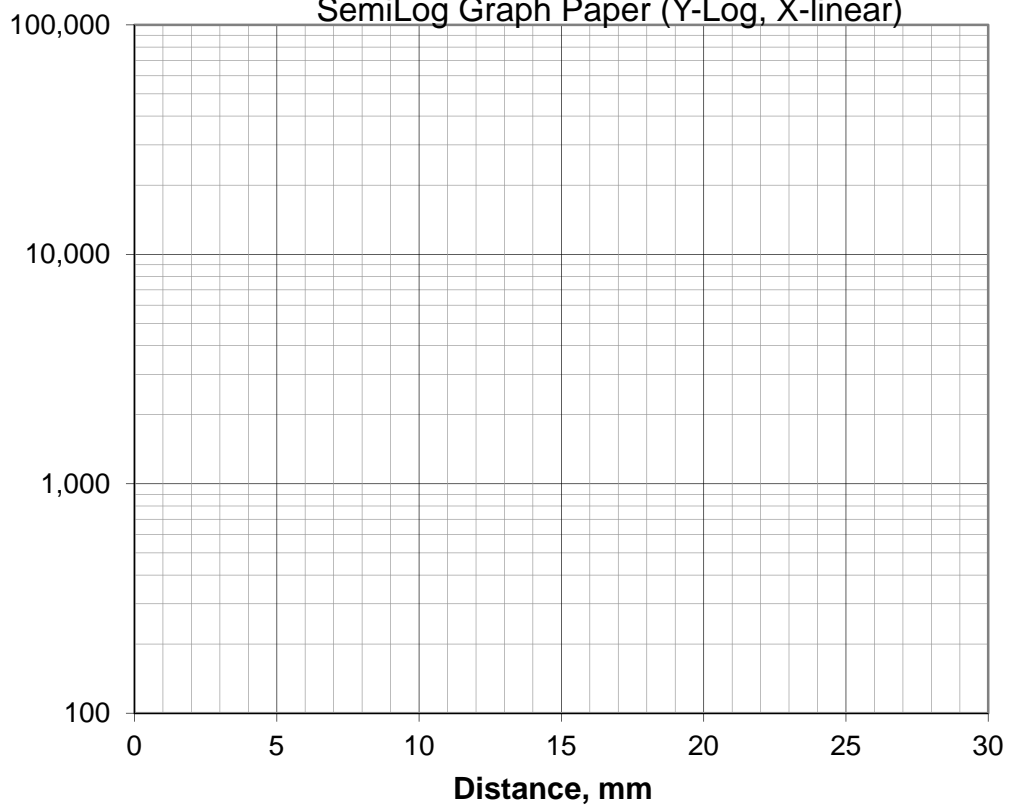


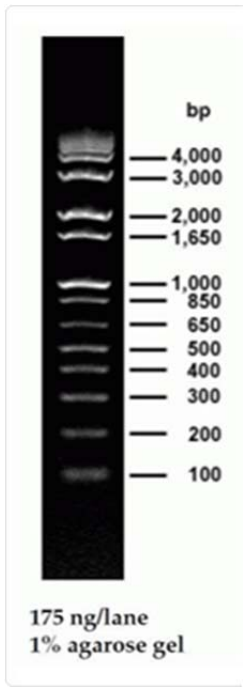
Base pair length Reference for lambda HindIII digest from NEB. FYI, there can be an additional band of 564bp and 125bp, but they are rarely visible

*Use the STANDARD CURVE graphed above to determine the Size of the Fragments in other lanes*

Size, base pairs

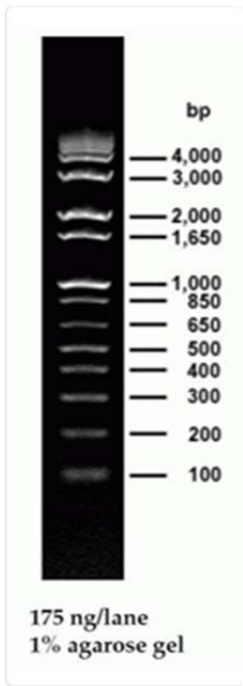
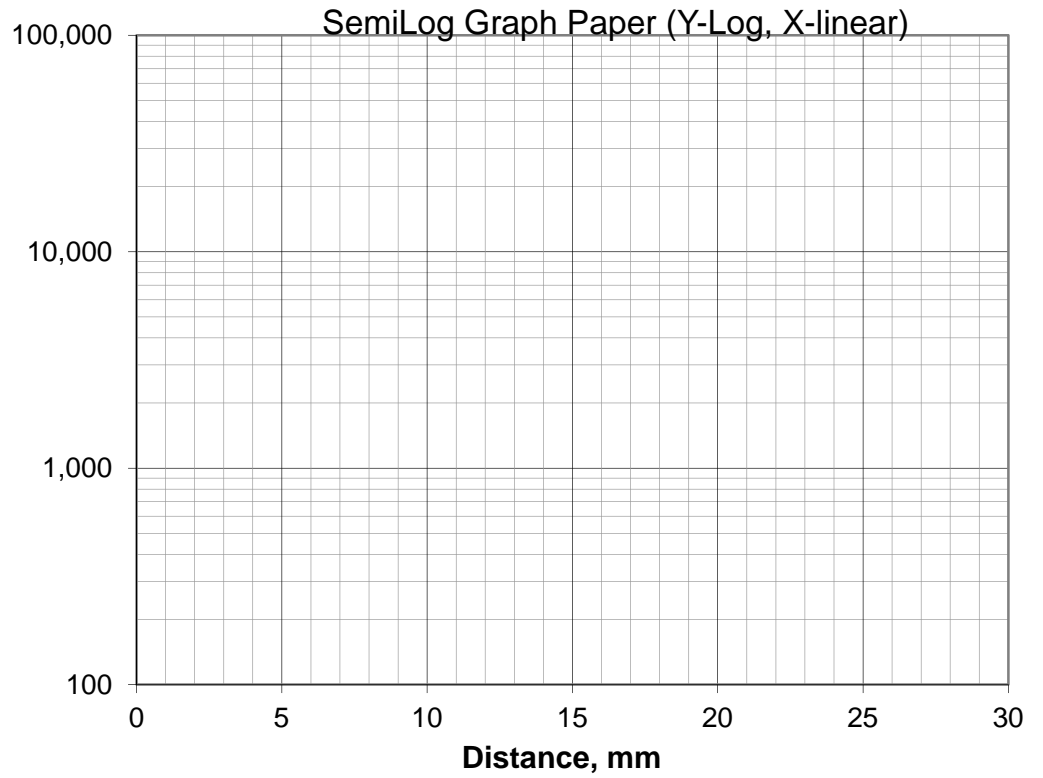
SemiLog Graph Paper (Y-Log, X-linear)





Use the STANDARD CURVE of "1kb plus" graphed above to determine the Size of the Fragments in other lanes

Size, base pairs



Use the STANDARD CURVE of "1kb plus" graphed above to determine the Size of the Fragments in other lanes

Size, base pairs

