

B \flat CLARINET FINGERING CHART

○ = open
● = pressed down

E	F \flat	E \sharp	F	F \sharp	G \flat	G	G \sharp	A \flat	A

A \sharp	B \flat	B	C \flat	B \sharp	C	C \sharp	D \flat	D	D \sharp	E \flat	E	F \flat	E \sharp	F

F \sharp	G \flat	G	G \sharp	A \flat	A	A \sharp	B \flat	B	C \flat	B \sharp	C

C \sharp	D \flat	D	D \sharp	E \flat	E	F \flat	E \sharp	F	F \sharp	G \flat	G	G \sharp	A \flat	A

A \sharp	B \flat	B	C \flat	B \sharp	C	C \sharp	D \flat	D	D \sharp	E \flat	E	F \flat	F

Clarinet

A.S.B.O.A. Scale Sheet

 $\text{♩} = 72+$

C Major

6 G Major

11 D Major

16 A Major

21 E Major

26 B Major

31 F Major

36 Bb Major

41 Eb Major

46 Ab Major

51 Db Major

56 Gb Major

61 a minor

Clarinet

2

66 e minor

71 b minor

76 f# minor

81 c# minor

86 g# minor

91 d minor

96 g minor

101 c minor

106 f minor

111 b-flat minor

116 e-flat minor

121 C to C Chromatic Scale

125

Adagio $\text{♩} = 48$

2' 05'' Adagio $\text{♩} = 48$

19. *p* *lagrimosamente*

5 *f* *p* *f* *p*

10 *p* *mf* *cresc.* *f*

15 Più mosso $\text{♩} = 56$ *p* *amabile* *mf* *mf*

20 *p* *f* *p* *3* *3* *3* *3* *3* *3*

25 *mf* *con fervore* *con calore* *f* *molto risoluto*

30 *ff* *f* *grave* *ff* *p* *A tempo* $\text{♩} = 48$ *con tinto!*

Meno mosso *f* *dimin.* *p* *pp* *p* *lagnoso*

35 *mf* *f* *p* *p* *concitato*

40 *f* *sempre f* *p* *f* *pressante*

f *rit.* *f* *diluendo* *pp*

R. 362

EXERCISE ON SCALES IN THIRDS, MAJOR AND MINOR.

I recommend this study as being one of the most important.

C Major



A Minor



F Major



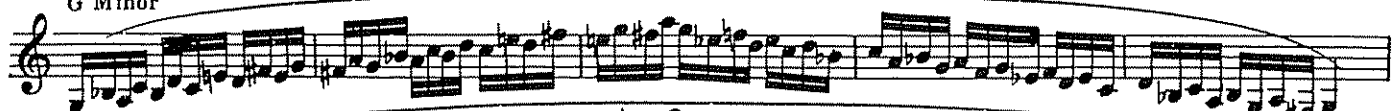
D Min.



Bb Major



G Minor



Eb Maj.



C Minor



Ab Major



F Minor



Db Major



Bb Minor



Gb Major



EXERCISE ON THE PERFECT CHORD,
MAJOR AND MINOR, IN ALL THE KEYS.

4

st 04

st 04

5015 N1446 44

1st 2nd 3rd

DIMINISHED 7th

Set II

8.

The musical score for Set II, Diminished 7th, is presented in four staves. The first staff begins with a treble clef and a key signature of one flat (B-flat). The music is written in a 3/4 time signature. The first staff contains 12 measures of music, followed by a double bar line. The second staff contains 12 measures, followed by a double bar line. The third staff contains 12 measures, followed by a double bar line. The fourth staff contains 12 measures, followed by a double bar line. The music is characterized by a series of eighth and sixteenth notes, often beamed together, and includes various accidentals (sharps, flats, and naturals) throughout. The overall structure is a continuous melodic line across the four staves.

Measures 10-12: Continuation of eighth-note patterns in treble clef. Measure 10 ends with a double bar line.

12.

Measures 12-13: Continuation of eighth-note patterns with triplets in treble clef. Measure 12 starts with a double bar line.

13.

Measures 13-14: Continuation of eighth-note patterns in treble clef. Measure 13 starts with a double bar line.

14.

Measures 14-16: Continuation of eighth-note patterns in treble clef. Measure 14 starts with a double bar line.

2104

DET
III