
Employees Sample Database

Table of Contents

1 Preface and Legal Notices	1
2 Introduction	2
3 Installation	3
4 Validating the Employee Data	4
5 Employees Structure	5
6 License for the Employees Database	7

For legal information, see the [Legal Notices](#).

For help with using MySQL, please visit either the [MySQL Forums](#) or [MySQL Mailing Lists](#), where you can discuss your issues with other MySQL users.

For additional documentation on MySQL products, including translations of the documentation into other languages, and downloadable versions in variety of formats, including HTML and PDF formats, see the [MySQL Documentation Library](#).

Document generated on: 2016-08-04 (revision: 48440)

1 Preface and Legal Notices

This document describes the `employees` sample database—its history, installation, structure and usage.

Legal Notices

Copyright © 2008, 2016, Oracle and/or its affiliates. All rights reserved.

This software and related documentation are provided under a license agreement containing restrictions on use and disclosure and are protected by intellectual property laws. Except as expressly permitted in your license agreement or allowed by law, you may not use, copy, reproduce, translate, broadcast, modify, license, transmit, distribute, exhibit, perform, publish, or display any part, in any form, or by any means. Reverse engineering, disassembly, or decompilation of this software, unless required by law for interoperability, is prohibited.

The information contained herein is subject to change without notice and is not warranted to be error-free. If you find any errors, please report them to us in writing.

If this is software or related documentation that is delivered to the U.S. Government or anyone licensing it on behalf of the U.S. Government, then the following notice is applicable:

U.S. GOVERNMENT END USERS: Oracle programs, including any operating system, integrated software, any programs installed on the hardware, and/or documentation, delivered to U.S. Government end users are "commercial computer software" pursuant to the applicable Federal Acquisition Regulation and agency-specific supplemental regulations. As such, use, duplication, disclosure, modification, and adaptation of the programs, including any operating system, integrated software, any programs installed on the hardware, and/or documentation, shall be subject to license terms and license restrictions applicable to the programs. No other rights are granted to the U.S. Government.

This software or hardware is developed for general use in a variety of information management applications. It is not developed or intended for use in any inherently dangerous applications, including

applications that may create a risk of personal injury. If you use this software or hardware in dangerous applications, then you shall be responsible to take all appropriate fail-safe, backup, redundancy, and other measures to ensure its safe use. Oracle Corporation and its affiliates disclaim any liability for any damages caused by use of this software or hardware in dangerous applications.

Oracle and Java are registered trademarks of Oracle and/or its affiliates. Other names may be trademarks of their respective owners.

Intel and Intel Xeon are trademarks or registered trademarks of Intel Corporation. All SPARC trademarks are used under license and are trademarks or registered trademarks of SPARC International, Inc. AMD, Opteron, the AMD logo, and the AMD Opteron logo are trademarks or registered trademarks of Advanced Micro Devices. UNIX is a registered trademark of The Open Group.

This software or hardware and documentation may provide access to or information about content, products, and services from third parties. Oracle Corporation and its affiliates are not responsible for and expressly disclaim all warranties of any kind with respect to third-party content, products, and services unless otherwise set forth in an applicable agreement between you and Oracle. Oracle Corporation and its affiliates will not be responsible for any loss, costs, or damages incurred due to your access to or use of third-party content, products, or services, except as set forth in an applicable agreement between you and Oracle.

Documentation Accessibility

For information about Oracle's commitment to accessibility, visit the Oracle Accessibility Program website at

<http://www.oracle.com/pls/topic/lookup?ctx=acc&id=docacc>.

Access to Oracle Support

Oracle customers that have purchased support have access to electronic support through My Oracle Support. For information, visit

<http://www.oracle.com/pls/topic/lookup?ctx=acc&id=info> or visit <http://www.oracle.com/pls/topic/lookup?ctx=acc&id=trs> if you are hearing impaired.

This documentation is NOT distributed under a GPL license. Use of this documentation is subject to the following terms:

You may create a printed copy of this documentation solely for your own personal use. Conversion to other formats is allowed as long as the actual content is not altered or edited in any way. You shall not publish or distribute this documentation in any form or on any media, except if you distribute the documentation in a manner similar to how Oracle disseminates it (that is, electronically for download on a Web site with the software) or on a CD-ROM or similar medium, provided however that the documentation is disseminated together with the software on the same medium. Any other use, such as any dissemination of printed copies or use of this documentation, in whole or in part, in another publication, requires the prior written consent from an authorized representative of Oracle. Oracle and/or its affiliates reserve any and all rights to this documentation not expressly granted above.

2 Introduction

This document describes the Employees sample database.

The Employees sample database was developed by Patrick Crews and Giuseppe Maxia and provides a combination of a large base of data (approximately 160MB) spread over six separate tables and consisting of 4 million records in total. The structure is compatible with a wide range of storage engine types. Through an included data file, support for partitioned tables is also provided.

In addition to the base data, the Employees database also includes a suite of tests that can be executed across the test data to ensure the integrity of the data that you have loaded. This should

help ensure the quality of the data during initial load, and can be used after usage to ensure that no changes have been made to the database during testing.

3 Installation

The Employees database is available from [Employees DB on Launchpad](#). You can download a prepackaged archive of the data, or access the information through Bazaar.

To use the archive package, download the archive and unpack it:

```
shell> tar -xjf $HOME/Downloads/employees_db-full-1.0.6.tar.bz2
shell> cd employees_db/
```

The Employees database is compatible with several different storage engines, with the InnoDB engine enabled by default. Edit the `employee.sql` file and adjust the comments to choose a different storage engine:

```
    set storage_engine = InnoDB;
-- set storage_engine = MyISAM;
-- set storage_engine = Falcon;
-- set storage_engine = PBXT;
-- set storage_engine = Maria;
```

To import the data into your MySQL instance, load the data through the `mysql` command-line tool:

```
shell> mysql -t < employees.sql
+-----+
| INFO |
+-----+
| CREATING DATABASE STRUCTURE |
+-----+
+-----+
| INFO |
+-----+
| storage engine: InnoDB |
+-----+
+-----+
| INFO |
+-----+
| LOADING departments |
+-----+
+-----+
| INFO |
+-----+
| LOADING employees |
+-----+
+-----+
| INFO |
+-----+
| LOADING dept_emp |
+-----+
+-----+
| INFO |
+-----+
| LOADING dept_manager |
+-----+
+-----+
| INFO |
+-----+
| LOADING titles |
+-----+
+-----+
| INFO |
+-----+
| LOADING salaries |
```

To test that the data you have loaded matches the expected results, run the test suite. For more information, see [Section 4, “Validating the Employee Data”](#).

4 Validating the Employee Data

You can validate the Employee data using two methods, `md5` and `sha`. Two SQL scripts are provided for this purpose, `test_employees_sha.sql` and `test_employees_md5.sql`. To run the tests, use `mysql`:

```
shell>time mysql -t < test_employees_sha.sql
```

INFO		
TESTING INSTALLATION		
table_name	expected_records	expected_crc
employees	300024	4d4aa689914d8fd41db7e45c2168e7dcb9697359
departments	9	4b315afa0e35ca6649df897b958345bcb3d2b764
dept_manager	24	9687a7d6f93ca8847388a42a6d8d93982a841c6c
dept_emp	331603	f16f6ce609d032d6b1b34748421e9195c5083da8
titles	443308	d12d5f746b88f07e69b9e36675b6067abb01b60e
salaries	2844047	b5a1785c27d75e33a4173aaa22ccf41ebd7d4a9f

table_name	found_records	found_crc
employees	300024	4d4aa689914d8fd41db7e45c2168e7dcb9697359
departments	9	4b315afa0e35ca6649df897b958345bcb3d2b764
dept_manager	24	9687a7d6f93ca8847388a42a6d8d93982a841c6c
dept_emp	331603	f16f6ce609d032d6b1b34748421e9195c5083da8
titles	443308	d12d5f746b88f07e69b9e36675b6067abb01b60e
salaries	2844047	b5a1785c27d75e33a4173aaa22ccf41ebd7d4a9f

table_name	records_match	crc_match
employees	OK	ok
departments	OK	ok
dept_manager	OK	ok
dept_emp	OK	ok
titles	OK	ok
salaries	OK	ok

```

real 0m37.067s
user 0m0.007s
sys 0m0.009s

shell>time mysql -t < test_employees_md5.sql
```

INFO		
TESTING INSTALLATION		
table_name	expected_records	expected_crc
employees	300024	4ec56ab5ba37218d187cf6ab09celaa1
departments	9	d1af5e170d2d1591d776d5638d71fc5f
dept_manager	24	8720e2f0853ac9096b689c14664f847e
dept_emp	331603	c2c4fc7f0506e50959a6c67ad55cac31
titles	443308	bfa016c472df68e70a03facafalbc0a8
salaries	2844047	fd220654e95aealb169624ffe3fca934

```

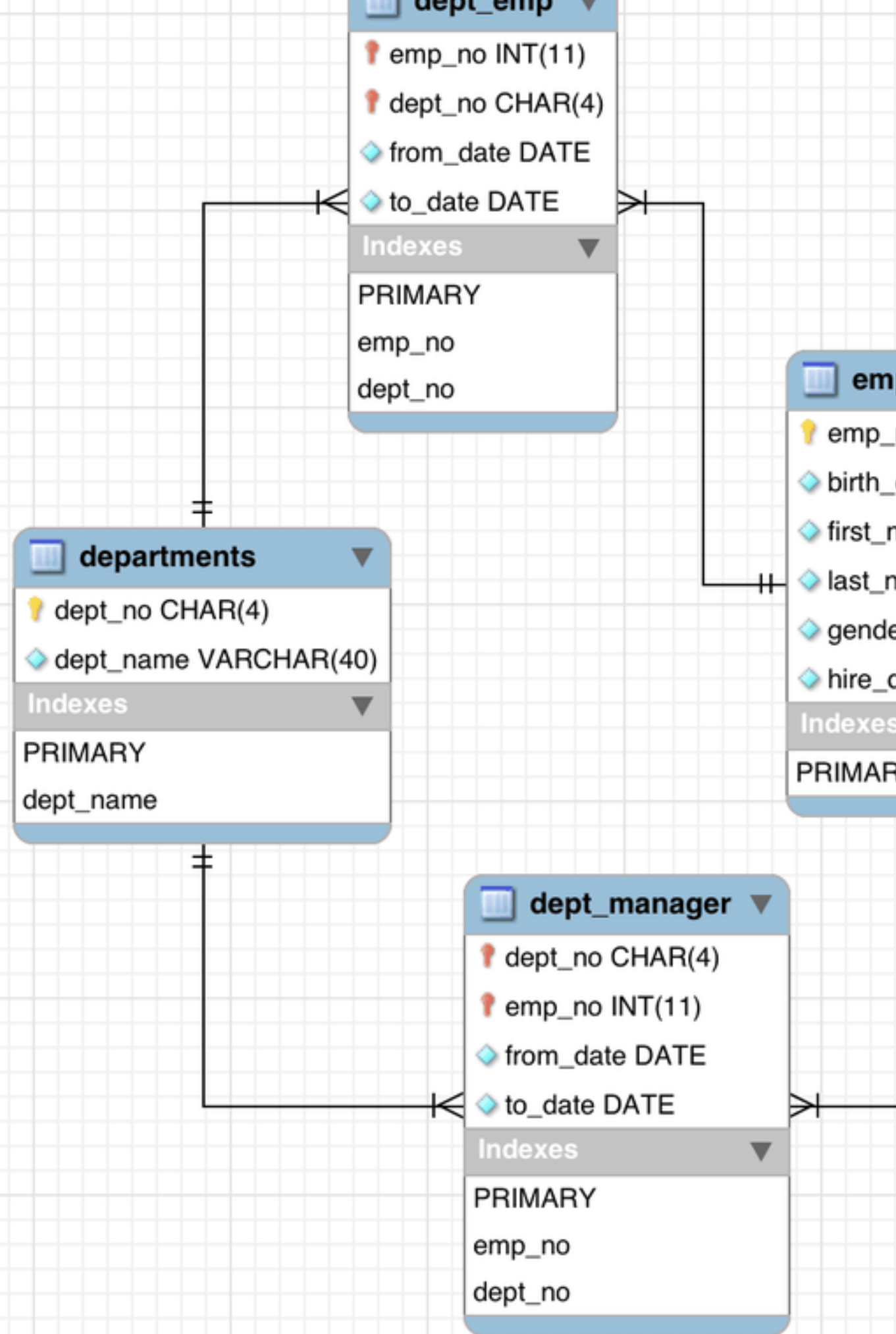
| table_name | found_records | found_crc |
+-----+-----+-----+
| employees | 300024 | 4ec56ab5ba37218d187cf6ab09celaa1 |
| departments | 9 | dlaf5e170d2d1591d776d5638d71fc5f |
| dept_manager | 24 | 8720e2f0853ac9096b689c14664f847e |
| dept_emp | 331603 | c2c4fc7f0506e50959a6c67ad55cac31 |
| titles | 443308 | bfa016c472df68e70a03facafa1bc0a8 |
| salaries | 2844047 | fd220654e95aea1b169624ffe3fca934 |
+-----+-----+-----+
| table_name | records_match | crc_match |
+-----+-----+-----+
| employees | OK | ok |
| departments | OK | ok |
| dept_manager | OK | ok |
| dept_emp | OK | ok |
| titles | OK | ok |
| salaries | OK | ok |
+-----+-----+-----+

real 0m33.453s
user 0m0.007s
sys 0m0.009s

```

5 Employees Structure

The following diagram provides an overview of the structure of the Employees sample database.



6 License for the Employees Database

This work is licensed under the Creative Commons Attribution-Share Alike 3.0 Unported License. To view a copy of this license, visit <http://creativecommons.org/licenses/by-sa/3.0/> or send a letter to Creative Commons, 171 Second Street, Suite 300, San Francisco, California, 94105, USA.

Please contact <http://www.mysql.com/about/contact/> for more information.

