



**Sample Content: Music Education Skills Assessment**  
EASTMAN SCHOOL OF MUSIC

**Undergraduate** applicants will demonstrate skills “a” through “e”; and

**Masters Degree** applicants will demonstrate skills “a” through “f” for their Music Education audition:

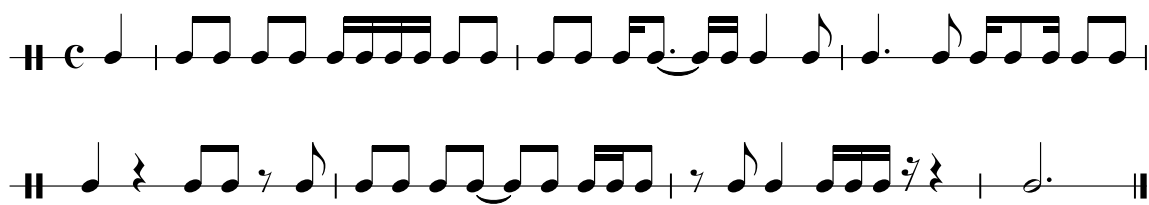
- a) read rhythm patterns, with or without syllables
- b) read by singing tonal patterns, with or without syllables
- c) read by singing major and minor melodies, with or without syllables
- d) improvise using the primary instrument; the improvisation should be based on the harmonic progression of the tune provided. (If the primary instrument is piano, improvisation should include use of both hands.)
- e) harmonize a folk melody (provided) at the keyboard
- f) Sing the melody to:
  - 1) “Happy Birthday”
  - 2) “America” (My Country ‘Tis of Thee)

Using both hands, accompany yourself at the piano using a harmonic progression *that does not include the melody*. You may use notation for this performance. A brief introduction to the piece is required.

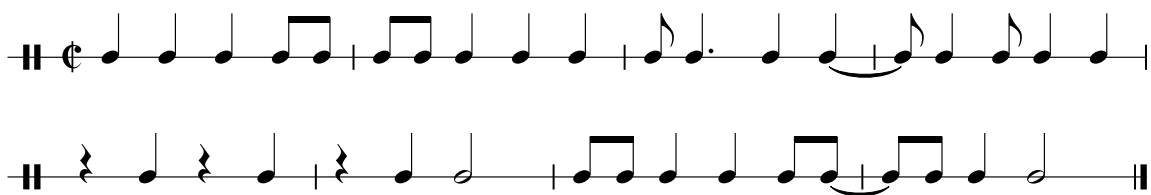
Rhythm Pattern Reading:

1. Perform the following patterns with rhythm syllables or with a neutral syllable. While performing the patterns, tap the large beat in your heels and pat the small beat with your hands on your lap. (The appropriate tempo will be established for you.)

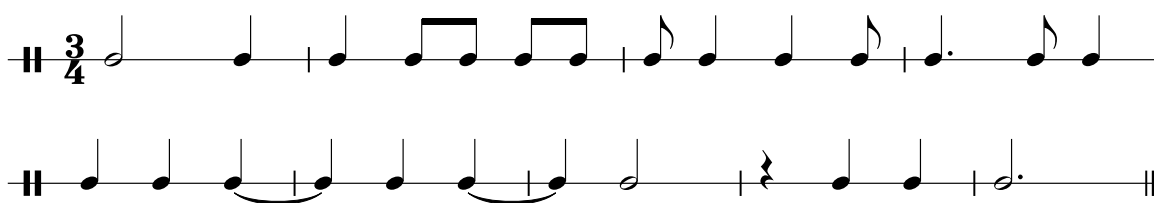
1. ♩ = 88



2. ♩ = 88



3. ♩ = 60



4. ♩ = 72



Tonal Pattern Reading:

1. Perform the following patterns with tonal syllables or with a neutral syllable. (The appropriate tonality will be established for you).

Tonal Patterns in C Major

Two staves of musical notation in C Major. The first staff contains four measures: C (C4-E4-G4), F (F4-A4-C5), G<sup>7</sup> (G4-B4-D5), and C (C5-B4-A4). The second staff contains four measures: F (F4-A4-C5), F (F4-A4-C5), G<sup>7</sup> (G4-B4-D5), and C (C5-B4-A4). Each measure is separated by a double bar line.

Tonal Patterns in D Minor

Two staves of musical notation in D Minor. The first staff contains four measures: Dm (D4-F4-A4), Gm (G4-B4-D5), A<sup>7</sup> (A4-C#5-E5), and Dm (D5-C#4-B4). The second staff contains four measures: Gm (G4-B4-D5), Gm (G4-B4-D5), A<sup>7</sup> (A4-C#5-E5), and Dm (D5-C#4-B4). Each measure is separated by a double bar line.

Reading:

1. Sing the following selection(s). (The appropriate tonality and meter will be established for you.)

1. **Moderato**

Two staves of musical notation in C Major, 2/4 time. The first staff begins with a treble clef, a key signature of one sharp (F#), and a common time signature (C). It contains two measures: the first measure has a melody starting on C4 and moving up to G4, marked *mf*; the second measure has a melody starting on G4 and moving up to C5, marked *cresc.*. The second staff contains two measures: the first measure has a melody starting on C4 and moving up to G4, marked *f*; the second measure has a melody starting on G4 and moving up to C5, marked with an accent (>). Each measure is separated by a double bar line.

2. **Moderato**

Exercise 2 is in B-flat major (two flats) and 6/8 time. It consists of two staves. The first staff begins with a piano (*p*) dynamic and a crescendo (*cresc.*) marking. The second staff features a mezzo-forte (*mf*) dynamic. The melody is characterized by eighth and sixteenth notes, often beamed together, and includes slurs across phrases. The piece concludes with a double bar line.

3. **Moderato**

Exercise 3 is in B-flat major (two flats) and 3/4 time. It consists of three staves. The first staff starts with a mezzo-forte (*mf*) dynamic and ends with a piano (*p*) dynamic. The second staff includes a decrescendo hairpin. The third staff features a decrescendo hairpin, a decrescendo (*dim.*) marking, and a pianissimo (*pp*) dynamic. The melody uses eighth and sixteenth notes with various slurs and phrasing marks. The piece ends with a double bar line.

4. **Adagio**

Exercise 4 is in D major (one sharp) and common time (C). It consists of two staves. The first staff begins with a pianissimo (*pp*) dynamic. The second staff includes a decrescendo hairpin. The melody is composed of eighth and sixteenth notes, often beamed together, with slurs indicating phrasing. The piece concludes with a double bar line.

Improvisation:

1. Perform one of the following selections on your instrument.
2. With the melody in mind, perform an improvised melody based on the harmonic progression.

1. Long Long Ago

Two staves of music in E-flat major, 4/4 time. The melody consists of eighth and quarter notes. Chord progressions are indicated above the staff: Eb, Bb7, Eb, Bb7, Eb.

2. Ach du Leiber Augustine

Three staves of music in E-flat major, 3/4 time. The melody features dotted rhythms and eighth notes. Chord progressions are indicated above the staff: Eb, Bb7, Eb, Bb7, Eb, Bb7, Eb, Bb7, Eb.

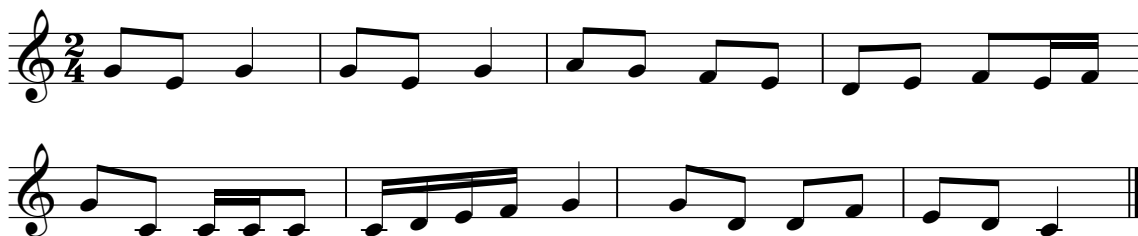
3. Joshua

Four staves of music in D minor, 4/4 time. The melody includes eighth and quarter notes. Chord progressions are indicated above the staff: Dm, A7, Dm, Dm, A7, Dm, Dm, A7, Dm. The piece concludes with the instruction "D.C. al fine".

Harmonization:

1. Perform the following melody(s) on the piano.
2. Provide an appropriate underlying harmony while performing the melody in the right hand.

1. This Old Man



2. Home on the Range

