

**October
2011**

October Calendar

- 21st -Staff Meeting-No Drop in Lunch Bunch
- 26th & 27th-Halloween Celebrations
- 28th-School Closed
- 29th & 30th-St. Mel Carnvial
- 31st School Closed

November Calendar

- 2nd-Fundraiser Night at Ruby's Diner
- 11th- School Closed-Veteran's Day
- 18th -Staff Meeting-No Drop-in Lunch Bunch
- 23rd-25th School Closed-Thanksgiving Holiday

St. Mel Preschool Newsletter

St. Mel Preschool provides a nurturing environment in a high quality Catholic early care and education program for all parents and children

Dear Parents,

What a great beginning we have had! Already into the 2nd month and the classroom schedules and activities are well under way. Children are happy and have adjusted nicely to the routine of school. Looks of "I Can't Do it" are turning into looks of "I DID IT!" It is very rewarding for us as teachers to witness this transition.

Along with the children's accomplishments, you parents have been wonderful also. Your response to volunteer for the many jobs at our preschool has been overwhelming. I am so grateful for all your support and willingness to take an active role in helping make St. Mel Preschool the "second happiest place on earth." Please check the October & November calendars. We have many busy days ahead of us and I look forward to sharing them with you and your children.

God's Blessings,

Claudia Powell

You're Invited!



Friday, October 28th 5:00-10:00

Saturday, October 29th 3:00-10:00

Sunday, October 30th Noon-8:00

Enjoy game booths, fun rides, incredible food, raffle, music, dancing and a haunted house...it's going to be a ghostly-good time you won't want to miss!

**A Triple Treat!
Triple the Fun!
Triple the Fear!
Triple the Days!!**



Carnival T-Shirts

Order yours today!

St. Mel School Halloween t-shirts are 100% cotton and \$13.00 each. If you have not ordered yours yet, it's not too late.

Forms are still available in the front office.



Artwork for Education.....

Thank you to all parents who signed permission slips for our Artwork for Education Fundraiser. We plan to use the funds from this fundraiser to help pay for replacing our misters around the sandbox.

The cards will take a few weeks to process and should be ready by the beginning of December—just in time for the Christmas season! If you have any questions, please contact Andrea Cogbill at dnacog@yahoo.com

VOLUNTEERING

Want to help in your child's classroom? Parents are welcome to participate in classroom activities and there are guidelines for doing this. Please see information sheet entitled "Guidelines for Classroom Visitation" and, if visitation seems appropriate for you, speak to your child's teacher for more details.

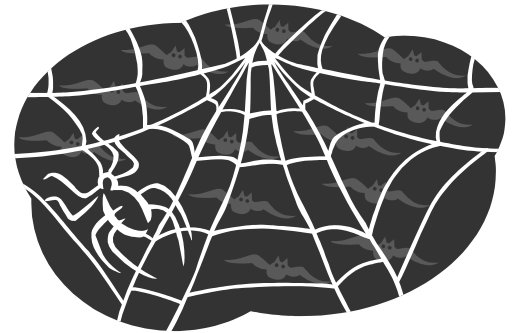
Remember: Virtus training must be completed first.

Virtus Training

The interest and response to the Virtus Training program has been wonderful. Our school depends on parent volunteers, please visit www.virtusonline.org to find a class near you.

BIRTHDAY PARTIES

PLEASE BE REMINDED THAT YOUR CHILD'S BIRTHDAY WILL BE RECOGNIZED BY THE TEACHERS DURING THE MORNING ACTIVITIES BUT WE DO NOT CELEBRATE WITH 'BIRTHDAY PARTY' SNACKS, GIFTS, FAVORS, BALLOONS OR OUTSIDE VISITORS. SAVE THOSE VERY SPECIAL IDEAS FOR HOME PARTIES. PARTY INVITATIONS CAN BE PUT IN DROP FILES. USE CLASS ROSTERS FOR NAMES, ADDRESSES AND TELEPHONE NUMBERS OF THE CHILDREN IN YOUR CLASS.



HALLOWEEN WEEK

Many parents are arranging Halloween fun for the Preschool. Our very own Pumpkin Patch will be popping up the last week of October. On **Wednesday, October 26, and Thursday October 27th**, the children will have a variety of Halloween activities.

- ♦ Children may wear costumes to school. Costumes are optional, but if you bring your child in a costume, please be sure it is one they can play in. **NO MASKS, WEAPONS OR ACCESSORIES.**
- ♦ Carnival games during outside playtime will be available. A parent committee is setting up simple games for Halloween fun. This will be part of our regular outside play activities.
- ♦ There will be a special snack—still healthy, but decorated for fun.
- ♦ Children will get a chance to "trick or treat" at other classrooms.

Halloween provides many different learning experiences, particularly pretend and role-playing. Also, understanding that we remain ourselves under our costumes is a revelation to some children.

If you wish to help with Halloween preparations, please watch the lobby for more information and sign up sheets.



Safety Concerns

Your child's safety is important to you and the preschool staff. Your participation and the measures teachers take will help create a safe environment for your child. Here are a few suggestions:

1. Please tell your child to **never leave** the Preschool building or play yard without a parent or teacher escorting them.
2. Children are **not allowed to push open the front doors of the preschool**. Adults should be the only "door openers."
3. Please do not permit your child to **run out of the classroom door** to meet you. Send your child back inside to wait for the teacher's permission to leave.

Caring for your child is an awesome responsibility that we take seriously. We are the first to admit that we need your support!

Parking Lot Safety

The parking situation is becoming increasingly more difficult as we go through the school year. Parents are lingering to visit with friends and children are feeling more free to run around. The red zones, handicap areas and driveway openings are being disregarded. Our greatest fear is that a child will be injured. We also want to avoid auto accidents.

The following guidelines will help ease the tensions that are arising from our crowded condition.

Parking in the spots designated for staff **is not allowed**.

- Parking in the alleyway next to the preschool building **is not allowed**. It is the only access for emergency and fire vehicles
- Parking next to the entrance gate (just inside) **is absolutely not allowed**...it blocks the entrance to the parking lot and the view of Serrania Avenue.

- **Hold your child's hand when walking through the parking lot.**

- Please do not linger in the lobby, parking lot or on the grass. Vacate a parking space as soon as possible.

We apologize for the parking conditions. We know that common courtesy will eliminate these problems.

Thank you for your cooperation with this matter.

SCHOOL CLOSURES

On Friday October 21st, we will have a Staff Meeting at 2:00. Please be on time to pick up Lunch Bunch Children. There will be **NO Drop-In LUNCH BUNCH** on this day.

This month there will be two days of closures. On Friday, October 28th school will be closed for a joint teacher retreat. On Monday, October 31st school will be closed.

Please Remember

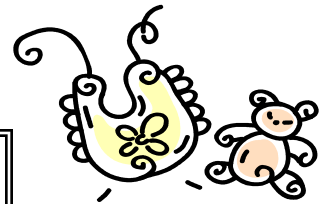
- Everything needs to be labeled with children's names. Jackets, sweatshirts, hats, or any other piece of clothing that may be removed during the day.
- Please pay all billings and extra fees as soon as you receive a notice. All services at the preschool are "pay as you go"
- There is a late fee for Lunch Bunch that is in effect. Lunch Bunch parents make pick their children up anytime between 12:30-2:00 from the playground or classroom. Pick up after 2:00 will result in a \$1.00 per minute late fee.

October Weather



Don't let the weather fool you this month. The days cool off quickly once the sun starts to set. Please send a jacket or sweater with your child each morning. We have outdoor play daily, weather permitting.

New Babies!



Congratulations to the Day & Kaiton Families on the newest additions to their families! Zachery is now a big brother to twins Charlie and Kate. Adelee is a big sister to Chessa! Welcome to our St. Mel Family!

Mommy I Don't Feel Good

When your child mutters those five words in the morning before school, please don't pass it off as an attempt to stay home from school. Flu season is here! If your child has a fever, sore throat, diarrhea, vomiting and/or congested cough, he/she must not come to school. This is for the safety of all the children as well as the teachers. Your cooperation is greatly appreciated. Remember, your child must be free from fever, diarrhea and related symptoms for at least 24 hours before they will be allowed to return to school. We will send home any child who doesn't feel well whether he/she has a fever or not. Thank you again for your efforts in assisting us.

