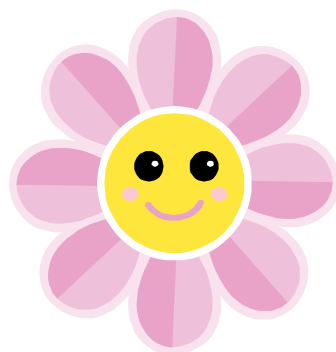




## Cecil Swanson School

4820 Rundlewood Dr. NE, Calgary, AB T1Y 5V9

t | 403-777-6690 f | 403-777-6693 | cecilswanson@cbe.ab.ca

<http://schools.cbe.ab.ca/b373>

## Newsletter | September 2016

### Principal's Message

Welcome back to another great year at Cecil Swanson. The Student/Parent Handbook is a valuable source of information about school hours, behaviour expectations, student safety and general information. It also includes a yearly calendar. This year we are asking you to sign the various pages as you read it over with your child. This will be one more opportunity for your child to review our schools expectations.

Teachers are already hard at work preparing some really great lessons for our young learners. They have also started planning field trips and other special experiences for the 2016-2017 school year.

Thanks to all of you who had the opportunity to volunteer last year. Your support was greatly appreciated. This year we hope to have a field trip schedule for you by the end of October. We realize that it is difficult for many working parents to volunteer on short notice. It is our hope that by giving you this information in the fall you will be able to rearrange your work schedule to attend at least one field trip this year. And if you are really interested we could definitely use your help in our classrooms or the Library (The Learning Commons). We know that you are aware that this is a special time for children when their parents go with them to a school events or participate in the classroom. So please think about it and hopefully you can spare a few hours.

School Council and the Cecil Swanson School Society provide important support to our school. It is an excellent way to be involved in your child's school. The first meeting is September 13 at 6:30 pm in the school staffroom and the October meeting will be the General Elections. All parents are welcome! Please come and support your children's school through School council.

We will have our first meet the teacher evening Thursday September 8 from 5:30 – 7:00. We encourage all parents to attend with their child. This is your opportunity to give us important information about your child. We all want to plan for their success for all of our children.

Next week a brown envelope with fee information and forms will be sent home with your child. Please check your child's back pack for these forms and return them as soon as possible to the school.

After school all children are to go home and check in with an adult before coming back to play in our creative playground. Only those students who are being supervised by an adult may stay and play. Children are not to arrive at school before 8:00 as there is no adult supervision available. Both of these measures are to ensure your child's safety. If your children go home for lunch, they should not return to play until 12:33 PM. At that time, teachers are available to supervise them.

If you have any questions or concerns, please do not hesitate to contact your child's teacher or the office.

Sincerely  
Mr. Victor Sealy, Principal

### Important Dates

Sept.6 – First day of school  
**NEW Half Day Students  
Dismissed @ 12:00**

Sept.6 – 9 Staggered Entry  
times for Kindergarten

Sept.8 – 5:30 – 7:00 p.m.  
Welcome Back Orientation  
Meeting

Sept.12 – Full Day classes for  
Kindergarten Begins

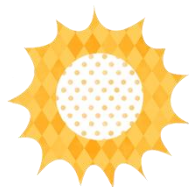
Sept.13 - 6:30 p.m.  
School Council Meeting

Sept.19 – 2:00 – 3:00 p.m.  
Terry Fox Run

Sept.23 – N.I.D. No School

Sept. 30 – Gr6 Assembly  
11-12:00 p.m.

**Please Note:**  
**Every Friday is an early  
dismissal day; students are  
dismissed @ 12:00 p.m.**



## SCHOOLHOURS 2016-2017

### Full Day Kindergarten & Grades 1-6

8:15 a.m. – 12:00 p.m. Monday - Thursday

12:48 p.m. – 3:00 p.m. Monday - Thursday

8:15 a.m. – 12:00 p.m. Friday

### School Fees 2016-2017

Invoices will be sent home the second week of September. Receipts for paid fees will be sent home with your child as they are processed.

If you are having financial difficulties, please contact Mrs. Harper at 777-6690, to make payment arrangements. Low-income families may **apply for** a waiver. This form is available at the office or online.

#### INSTRUCTIONAL FEES (Mandatory per-student fee)

CBE ISM	2016-17
Kindergarten (Full-day program)	\$ 30.00
Activity & Program Fee	\$ 35.00
Elementary (Grades 1 to 6)	\$ 30.00
Activity & Program Fee	\$ 35.00

### Lunch Program

#### FEES

LUNCHROOM FEES	2016-17
Incidental Fee (if in the lunch program)	\$ 10.00
Elementary Students (Kindergarten-Grade 6)	\$ 255.00 (annual fee)

### Drop In Lunch Fees

Students are welcome to use the lunchroom program for dropping in. Please contact the school @ 403- 777-6690 ext 2227 for more information.

**\$5.00 PER STUDENT PER DAY**



## Lunch Program Information

Welcome to all students who are new to the lunchroom and to those returning.

Students need to come to their lunchroom with appropriate clothing and footwear for our uncertain weather. **We are a nut aware school, due to severe allergies of some students.** Please do not send any nut products in your child's lunch. Please remember to include cutlery with your child's lunch, we do not provide any. Microwave lunches should only be used for reheating food, up to 30 seconds.

## Safety Concerns

Please be sure we have your current phone numbers on file, so that in the event of a health emergency with your child we can contact you.

When dropping off or picking up your child, please do not park in either parking lot, they are for staff use only and they become too crowded. This poses a risk for your child.

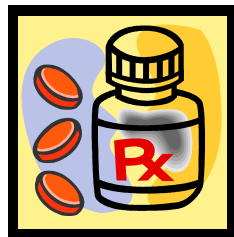


## Attendance and Illness

Attendance is one of the keys to success in school. We encourage students to be at school on time. Please contact the office if your child is going to be absent or late. It is for the safety of your child. We recognize that children do become ill, occasionally are late, or encounter a family emergency. These situations will be handled with compassion and care. However, teachers and administration will be diligent again this year in monitoring student attendance and will be contacting parents promptly when there are attendance concerns.

## Medical Conditions and Medication

Parents are asked to notify the school if their child has a medical condition or problem. It is important that we are aware of medical issues and the procedures to follow in case of an emergency situation. This information should be updated at the beginning of the school year and at any time throughout the year, if there are any changes.



Some children take medication during the school day. To protect the safety of all of our students and to ensure the security of the medications, all medicine must be stored at the school office with instructions for staff. An authorization form, Student Health Form must be completed and signed by the principal before medication will be administered at school. Please request a form from the office if needed.



Grade	Teacher (s)
<b>Principal</b>	V. Sealy
<b>Assistant Principal</b>	A. Topp
<b>Kindergarten</b>	P. Faulkner
	T. Morgan
<b>Grade 1</b>	K. Robertson
	K. Bereskow
	T. Whitehouse
<b>Grade 2</b>	N. Valz
	K. Farmer
<b>Grade 3</b>	A. Weatherbee
	D. Putici
<b>Grade 4</b>	M. Olfert
	A. Ford
<b>Grade 5</b>	E. Peller
	S. Inberg
<b>Grade 6</b>	E. Peltier
	T. Freek-Meehan & A. Topp
<b>SKILL I</b>	A. Jokuty
<b>SKILL II</b>	J. Linzel
<b>Resource/Literacy/ESL</b>	C. Rosenbaum-Nordoft
<b>Music</b>	T. Freek-Meehan

<b>Facility Operator</b>	L. Frandle
	J. Josol
<b>Admin. Secretary</b>	C. Harper
<b>Office Assistant</b>	S. Hauth-Tarrant
<b>Library Assistant</b>	J. Liukaitis
<b>ESL Assistant</b>	B. Skubovious
<b>Ed Assistants</b>	L. Belan
	C. Bilyk
	E. Calso
	S. Finch
	L. Kurta
	A. Khangura
	V. Kurtaliqi
	B. Lewis
	K. Neuwirth
	S. Salihovic
	S. Sohail
<b>Lead Lunch Supervisor</b>	S. Hauth-Tarrant
<b>Meal Supervisors</b>	E. Abofeya
	L. El-Hajj Hassan
	A. Guay
	D. Kinnera
	A. Rekic
	M. Sandhu
	A. Taha

# Subscribe to stay informed

## Parents/guardians,

Due to Canada's Anti-Spam Legislation (CASL), you need to subscribe online if you want to continue receiving email or text messages on "commercial" school topics such as picture days, student fees, field trip costs, yearbooks, fun lunches and more. Starting Oct. 1, 2016, if you have not subscribed, you will no longer receive these messages. You will continue to receive messages on non-commercial school topics such as absence and emergency notifications.

In addition, if you want to be able to receive any text messages from your school or the Calgary Board of Education, you need to opt-in for texts.

**To ensure you can receive messages from the Calgary Board of Education and our schools, please do the following:**

- 1 | To subscribe to receive commercial messages, go to [www.cbe.ab.ca/subscribe](http://www.cbe.ab.ca/subscribe) to enter your email address and click **Subscribe**. Use the primary email address on file at the school.
- 2 | To opt-in to receive text messages, text the word **YES** to the six-digit number 724665.

If your contact information changes, please:

- Tell the school
- Subscribe online again, if your email address changes
- Opt-in for text messages again, if your cell number changes

## Please note:

- Your subscription and opt-in will apply to any Calgary Board of Education school that your children attend; however, if you provided different contact information to different schools, you will need to subscribe and opt-in for every email address and cell number.
- Your subscription and opt-in will continue indefinitely unless you withdraw your consent.
- You can withdraw your consent at any time. To unsubscribe for commercial email and text messages go to [www.cbe.ab.ca/unsubscribe](http://www.cbe.ab.ca/unsubscribe). To opt-out of receiving any text messages, text **STOP** to 724665.

Thank you.



This request is sent on behalf of the Calgary Board of Education and our schools. Visit [www.cbe.ab.ca/directory](http://www.cbe.ab.ca/directory) for school contact information.

Calgary Board of Education  
1221-8 St S.W. Calgary T2R 0L4  
t | 403-817-4000



**Calgary Board  
of Education**



# Leadership Link



## Welcome to the 2016-17 school year

Whether this is your first, fifth or last “back to school” season with the CBE, we look forward to making the 2016-17 school year a great one.

The start of a new year has always been memorable to me. As a student, I looked forward to seeing my friends again after the summer break. As a teacher, I had big dreams and plans to put into motion. As a parent of a CBE student, I wonder what my child will learn and what challenges and successes we will celebrate together. When I was a principal, the first days of school were a whirlwind of activity as I helped families, teachers and students settle in. As chief superintendent, I am responsible for creating the conditions under which each student will learn and grow to the very best of their ability.

This is a natural time to refresh commitments and goals for the year. I'd like to share mine:

### Improving student success

I am committed to the success of your child and each of the more than 117,000 students in the CBE. Personalized learning - understanding the interests, accomplishments, needs and goals of each student and planning for their progress and achievement - is the foundation of our work. Success for each student is our goal, and everyone at the CBE is focused on ensuring that each student can be successful. This year we'll be bringing new focus to our work in literacy and math and our work with Aboriginal students. We will also be renewing our high school success strategy and building on our already improving high school completion rates.

### Supporting our staff

For our students to succeed, our teachers and other

staff members must also continue to learn. Investing in our teachers and the people who support our schools is critical to our success. During 2016-17 we will be building a new on-boarding process for teachers and building new supports for school leaders.

### Building and opening new schools

I am committed to providing enriching learning environments for all our students. We are continuing to build, modernize and operationalize 31 new schools and maintain more than 225 existing ones. Our students deserve the very best places to learn and we are working hard to make that happen.

### Providing safe and caring environments

Every student also needs to feel safe in their school environment, and I am committed to ensuring that our schools and workplaces are welcoming, caring, respectful and safe places for everyone.

### Listening to your voices

This year, I will work to ensure that you have an opportunity to share your perspectives on issues and decisions that affect you. I look forward to meeting many of you at open houses and other engagement sessions and learning together. We will communicate clearly with you about things that are happening at your child's school and throughout our system.

2016-17 is already shaping up to be a memorable school year, and I look forward to all we will learn and experience together.

David Stevenson  
Chief Superintendent of Schools